


# Anti-PLRG1 antibody ab86050

[1 References](#) [3 图像](#)

### 概述

<b>产品名称</b>	Anti-PLRG1抗体
<b>描述</b>	兔多克隆抗体to PLRG1
<b>宿主</b>	Rabbit
<b>经测试应用</b>	<b>适用于:</b> WB, IP, IHC-P
<b>种属反应性</b>	<b>与反应:</b> Mouse, Human <b>预测可用于:</b> Rat, Cow 
<b>免疫原</b>	Synthetic peptide within Human PLRG1 aa 450 to the C-terminus. The exact immunogen sequence used to generate this antibody is proprietary information. If additional detail on the immunogen is needed to determine the suitability of the antibody for your needs, please <b><a href="#">contact</a></b> our Scientific Support team to discuss your requirements. Database link: <a href="#">O43660</a>
<b>阳性对照</b>	WB: HeLa, HEK-293T and NIH/3T3 whole cell lysates. IHC-P: Human breast carcinoma and prostate carcinoma tissue. IP: HeLa whole cell lysate.
<b>常规说明</b>	The Life Science industry has been in the grips of a reproducibility crisis for a number of years. Abcam is leading the way in addressing this with our range of recombinant monoclonal antibodies and knockout edited cell lines for gold-standard validation. Please check that this product meets your needs before purchasing.  If you have any questions, special requirements or concerns, please send us an inquiry and/or contact our Support team ahead of purchase. Recommended alternatives for this product can be found below, along with publications, customer reviews and Q&As

### 性能

<b>形式</b>	Liquid
<b>存放说明</b>	Shipped at 4°C. Upon delivery aliquot and store at -20°C. Avoid freeze / thaw cycles.
<b>存储溶液</b>	pH: 6.8 Preservative: 0.09% Sodium azide Constituents: Tris buffered saline, 0.1% BSA
<b>纯度</b>	Immunogen affinity purified
<b>克隆</b>	多克隆
<b>同种型</b>	IgG

## 应用

**The Abpromise guarantee**      **Abpromise™** 承诺保证使用 ab86050 于以下的经测试应用

“应用说明”部分 下显示的仅为推荐的起始稀释度;实际最佳的稀释度/浓度应由使用者检定。

应用	Ab评论	说明
WB		1/2000 - 1/10000. Detects a band of approximately 57 kDa (predicted molecular weight: 57 kDa).
IP		Use at 2-5 µg/mg of lysate.
IHC-P		1/200 - 1/1000. Perform heat mediated antigen retrieval with citrate buffer pH 6 before commencing with IHC staining protocol.

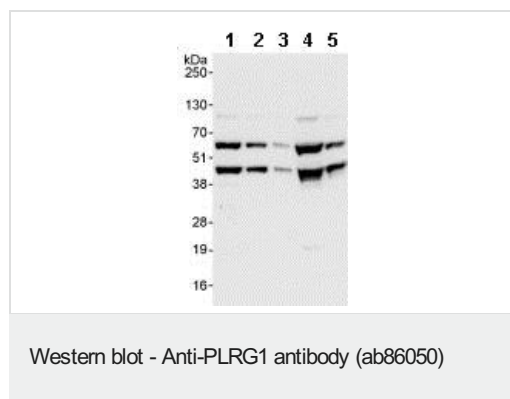
## 靶标

**功能**      Necessary for spliceosome assembly and for pre-mRNA splicing.

**序列相似性**      Belongs to the WD repeat PRL1/PRL2 family.  
Contains 7 WD repeats.

**细胞定位**      Nucleus speckle.

## 图片



**All lanes :** Anti-PLRG1 antibody (ab86050) at 0.04 µg/ml

**Lane 1 :** HeLa whole cell lysate at 50 µg

**Lane 2 :** HeLa whole cell lysate at 15 µg

**Lane 3 :** HeLa whole cell lysate at 5 µg

**Lane 4 :** 293T whole cell lysate at 50 µg

**Lane 5 :** NIH3T3 whole cell lysate at 50 µg

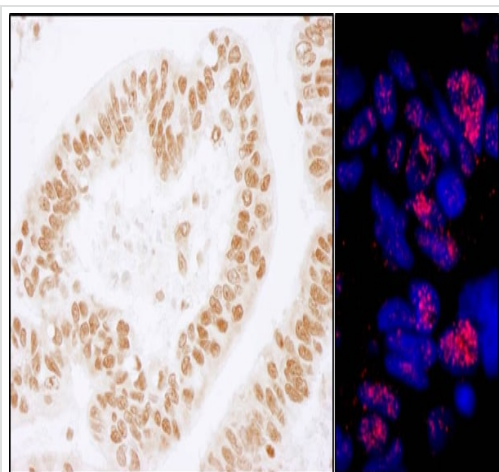
Developed using the ECL technique.

**Predicted band size:** 57 kDa

**Observed band size:** 57 kDa

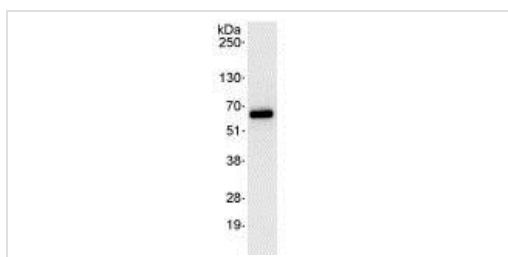
**Additional bands at:** 45 kDa. We are unsure as to the identity of these extra bands.

**Exposure time:** 3 seconds



Immunohistochemistry (Formalin/PFA-fixed paraffin-embedded sections) - Anti-PLRG1 antibody (ab86050)

Immunohistochemistry (Formalin/PFA-fixed paraffin-embedded sections) analysis of human prostate carcinoma (left) and breast carcinoma (right) tissues labelling PLRG1 with ab86050 at 1/200 (1µg/ml). Detection: DAB and a DyLight® 594-conjugated goat anti-rabbit IgG (H+L) (1/100).



Immunoprecipitation - Anti-PLRG1 antibody (ab86050)

Detection of PLRG1 in Immunoprecipitates of HeLa whole cell lysate (1 mg for IP, 20% of IP loaded) using ab86050 at 3 µg/mg lysate for IP and at 0.4 µg/ml for subsequent Western blot detection. Detection: Chemiluminescence with exposure time of 3 seconds.

**Please note:** All products are "FOR RESEARCH USE ONLY. NOT FOR USE IN DIAGNOSTIC PROCEDURES"

### Our Abpromise to you: Quality guaranteed and expert technical support

- Replacement or refund for products not performing as stated on the datasheet
- Valid for 12 months from date of delivery
- Response to your inquiry within 24 hours
- We provide support in Chinese, English, French, German, Japanese and Spanish
- Extensive multi-media technical resources to help you
- We investigate all quality concerns to ensure our products perform to the highest standards

If the product does not perform as described on this datasheet, we will offer a refund or replacement. For full details of the Abpromise, please visit <https://www.abcam.cn/abpromise> or contact our technical team.

### Terms and conditions

- Guarantee only valid for products bought direct from Abcam or one of our authorized distributors