

Anti-PLK1 antibody [EPR19534] ab189139

重组 RabMAb

10 References [6 图像](#)

概述

产品名称	Anti-PLK1抗体[EPR19534]
描述	兔单克隆抗体[EPR19534] to PLK1
宿主	Rabbit
经测试应用	适用于: Flow Cyt (Intra), ICC/IF, IP, WB
种属反应性	与反应: Human
免疫原	Synthetic peptide. This information is proprietary to Abcam and/or its suppliers.
阳性对照	WB: HeLa, K562, PC-3 and HepG2 whole cell lysates. ICC/IF: HeLa cells. Flow Cyt (intra): HeLa and K562 cells. IP: K562 whole cell lysate.
常规说明	<p>This product is a recombinant monoclonal antibody, which offers several advantages including:</p> <ul style="list-style-type: none"> - High batch-to-batch consistency and reproducibility - Improved sensitivity and specificity - Long-term security of supply - Animal-free production <p>For more information see here.</p> <p>Our RabMAb[®] technology is a patented hybridoma-based technology for making rabbit monoclonal antibodies. For details on our patents, please refer to RabMAb[®] patents.</p>

性能

形式	Liquid
存放说明	Shipped at 4°C. Store at +4°C short term (1-2 weeks). Upon delivery aliquot. Store at -20°C long term. Avoid freeze / thaw cycle.
存储溶液	<p>pH: 7.2</p> <p>Preservative: 0.01% Sodium azide</p> <p>Constituents: 59% PBS, 40% Glycerol (glycerin, glycerine), 0.05% BSA</p>
纯度	Protein A purified
克隆	单克隆
克隆编号	EPR19534
同种型	IgG

应用

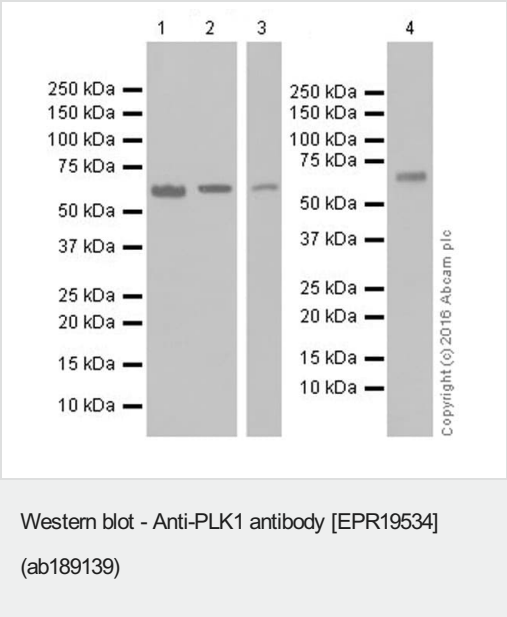
The Abpromise guarantee **Abpromise™**承诺保证使用ab189139于以下的经测试应用

“应用说明”部分 下显示的仅为推荐的起始稀释度;实际最佳的稀释度/浓度应由使用者检定。

应用	Ab评论	说明
Flow Cyt (Intra)		1/60. ab172730 - Rabbit monoclonal IgG, is suitable for use as an isotype control with this antibody.
ICC/IF		1/500.
IP		1/30.
WB		1/1000. Detects a band of approximately 68 kDa (predicted molecular weight: 68 kDa).

靶标

功能	Serine/threonine-protein kinase that performs several important functions throughout M phase of the cell cycle, including the regulation of centrosome maturation and spindle assembly, the removal of cohesins from chromosome arms, the inactivation of APC/C inhibitors, and the regulation of mitotic exit and cytokinesis. Required for recovery after DNA damage checkpoint and entry into mitosis. Required for kinetochore localization of BUB1B. Phosphorylates SGOL1. Required for spindle pole localization of isoform 3 of SGOL1 and plays a role in regulating its centriole cohesion function. Phosphorylates BORA, and thereby promotes the degradation of BORA. Contributes to the regulation of AURKA function. Regulates TP53 stability through phosphorylation of TOPORS.
组织特异性	Placenta and colon.
序列相似性	Belongs to the protein kinase superfamily. Ser/Thr protein kinase family. CDC5/Polo subfamily. Contains 2 POLO box domains. Contains 1 protein kinase domain.
发展阶段	Accumulates to a maximum during the G2 and M phases, declines to a nearly undetectable level following mitosis and throughout G1 phase, and then begins to accumulate again during S phase.
翻译后修饰	Catalytic activity is enhanced by phosphorylation of Thr-210. Phosphorylation at Thr-210 is first detected on centrosomes in the G2 phase of the cell cycle, peaks in prometaphase and gradually disappears from centrosomes during anaphase. Autophosphorylation and phosphorylation of Ser-137 may not be significant for the activation of PLK1 during mitosis, but may enhance catalytic activity during recovery after DNA damage checkpoint. Ubiquitinated by the anaphase promoting complex/cyclosome (APC/C) in anaphase and following DNA damage, leading to its degradation by the proteasome. Ubiquitination is mediated via its interaction with FZR1/CDH1. Ubiquitination and subsequent degradation prevents entry into mitosis and is essential to maintain an efficient G2 DNA damage checkpoint.
细胞定位	Nucleus. Chromosome > centromere > kinetochore. Cytoplasm > cytoskeleton > centrosome. During early stages of mitosis, the phosphorylated form is detected on centrosomes and kinetochores. Localizes to the outer kinetochore. Presence of SGOL1 and interaction with the phosphorylated form of BUB1 is required for the kinetochore localization.



All lanes : Anti-PLK1 antibody [EPR19534] (ab189139) at 1/1000 dilution

Lane 1 : HeLa (Human epithelial cell line from cervix adenocarcinoma) whole cell lysate

Lane 2 : K562 (Human chronic myelogenous leukemia cell line from bone marrow) whole cell lysate

Lane 3 : PC-3 (Human prostate adenocarcinoma cell line) whole cell lysate

Lane 4 : HepG2 (Human liver hepatocellular carcinoma cell line) whole cell lysate

Lysates/proteins at 20 µg per lane.

Secondary

All lanes : Goat Anti-Rabbit IgG H&L (HRP) ([ab97051](#)) at 1/100000 dilution

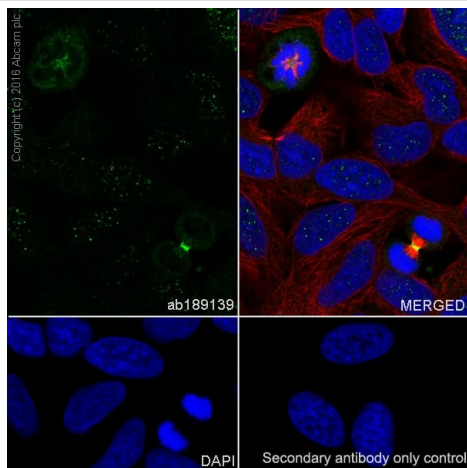
Predicted band size: 68 kDa

Observed band size: 68 kDa

Blocking/Dilution buffer: 5% NFDm/TBST.

Exposure time: Lane 1 and 2: 30 seconds; Lane 3 and 4: 3 minutes.

The expression profile observed is consistent with what has been described in the literature (PMID:21545375).



Immunocytochemistry/ Immunofluorescence - Anti-PLK1 antibody [EPR19534] (ab189139)

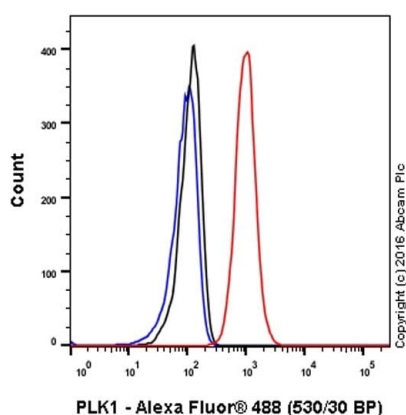
Immunofluorescent analysis of 4% paraformaldehyde-fixed, 0.1% Triton X-100 permeabilized HeLa (Human epithelial cell line from cervix adenocarcinoma) cells labeling PLK1 with ab189139 at 1/500 dilution, followed by Goat anti-rabbit IgG (Alexa Fluor® 488) (**ab150077**) secondary antibody at 1/1000 dilution (green).

Confocal image showing strong signal staining on midbody and kinetochore of HeLa cell line.

The nuclear counterstain is DAPI (blue).

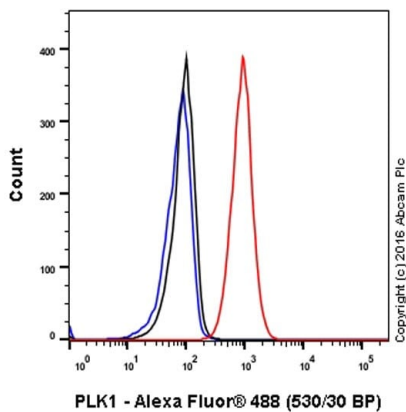
Tubulin is detected with **ab195889** (Anti-alpha Tubulin antibody [DM1A] - Microtubule Marker (Alexa Fluor® 594)) at 1/200 dilution (red).

Secondary antibody only control: Used PBS instead of primary antibody, secondary antibody is Goat anti-rabbit IgG (Alexa Fluor® 488) (**ab150077**) at 1/1000 dilution.

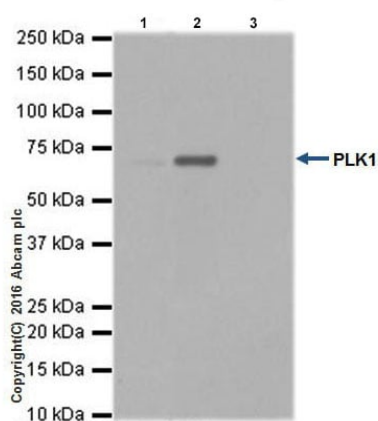


Flow Cytometry (Intracellular) - Anti-PLK1 antibody [EPR19534] (ab189139)

Intracellular flow cytometric analysis of 4% paraformaldehyde-fixed HeLa (Human epithelial cell line from cervix adenocarcinoma) cells labeling PLK1 with ab189139 at 1/60 dilution (red) compared with a Rabbit IgG, monoclonal [EPR25A]-isotype control (**ab172730**) (black) and an unlabelled control (cells without incubation with primary antibody and secondary antibody) (blue). Goat anti Rabbit IgG (Alexa Fluor® 488) at 1/2000 dilution was used as the secondary antibody.



Flow Cytometry (Intracellular) - Anti-PLK1 antibody
[EPR19534] (ab189139)



Immunoprecipitation - Anti-PLK1 antibody
[EPR19534] (ab189139)

Intracellular flow cytometric analysis of 4% paraformaldehyde-fixed K562 (Human chronic myelogenous leukemia cell line from bone marrow) cells labeling PLK1 with ab189139 at 1/60 dilution (red) compared with a Rabbit IgG, monoclonal [EPR25A]-Isotype control (**ab172730**) (black) and an unlabelled control (cells without incubation with primary antibody and secondary antibody) (blue). Goat anti Rabbit IgG (Alexa Fluor® 488) at 1/2000 dilution was used as the secondary antibody.

PLK1 was immunoprecipitated from 0.35 mg of K562 (Human chronic myelogenous leukemia cell line from bone marrow) whole cell lysate with ab189139 at 1/30 dilution.

Western blot was performed from the immunoprecipitate using ab189139 at 1/1000 dilution.

VeriBlot for IP Detection Reagent (HRP) (**ab131366**), was used for detection at 1/10000 dilution.

Lane 1: K562 whole cell lysate, 10 µg (Input).

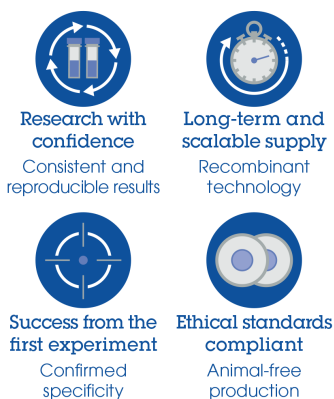
Lane 2: ab189139 IP in K562 whole cell lysate.

Lane 3: Rabbit IgG, monoclonal [EPR25A]- Isotype Control (**ab172730**) instead of ab189139 in K562 whole cell lysate.

Blocking and dilution buffer and concentration: 5% NFDM/TBST.

Exposure time: 30 seconds.

Why choose a recombinant antibody?



Anti-PLK1 antibody [EPR19534] (ab189139)

Please note: All products are "FOR RESEARCH USE ONLY. NOT FOR USE IN DIAGNOSTIC PROCEDURES"

Our Abpromise to you: Quality guaranteed and expert technical support

- Replacement or refund for products not performing as stated on the datasheet
- Valid for 12 months from date of delivery
- Response to your inquiry within 24 hours

- We provide support in Chinese, English, French, German, Japanese and Spanish
- Extensive multi-media technical resources to help you
- We investigate all quality concerns to ensure our products perform to the highest standards

If the product does not perform as described on this datasheet, we will offer a refund or replacement. For full details of the Abpromise, please visit <https://www.abcam.cn/abpromise> or contact our technical team.

Terms and conditions

- Guarantee only valid for products bought direct from Abcam or one of our authorized distributors