

Anti-Plexin A4 antibody ab39350

★★★★☆ [4 Abreviews](#) [14 References](#) [3 图像](#)

概述

| | |
|-------|------------------------------------------------------------------------------------------------------------------------------------------------------------|
| 产品名称 | Anti-Plexin A4抗体 |
| 描述 | 兔多克隆抗体to Plexin A4 |
| 宿主 | Rabbit |
| 经测试应用 | 适用于: WB, ICC/IF |
| 种属反应性 | 与反应: Mouse, Rat, Human |
| 免疫原 | Synthetic peptide corresponding to Mouse Plexin A4 aa 500-600 conjugated to keyhole limpet haemocyanin. (Peptide available as ab39349) |

常规说明

The Life Science industry has been in the grips of a reproducibility crisis for a number of years. Abcam is leading the way in addressing this with our range of recombinant monoclonal antibodies and knockout edited cell lines for gold-standard validation. Please check that this product meets your needs before purchasing.

If you have any questions, special requirements or concerns, please send us an inquiry and/or contact our Support team ahead of purchase. Recommended alternatives for this product can be found below, along with publications, customer reviews and Q&As

性能

| | |
|------|----------------------------------------------------------------------------------------------------------------------------------|
| 形式 | Liquid |
| 存放说明 | Shipped at 4°C. Store at +4°C short term (1-2 weeks). Upon delivery aliquot. Store at -20°C or -80°C. Avoid freeze / thaw cycle. |
| 存储溶液 | pH: 7.40 Preservative: 0.02% Sodium azide Constituent: PBS |
| 纯度 | Immunogen affinity purified |
| 克隆 | 多克隆 |
| 同种型 | IgG |

Batches of this product that have a concentration < 1mg/ml may have BSA added as a stabilising agent. If you would like information about the formulation of a specific lot, please contact our scientific support team who will be happy to help.

应用

The Abpromise guarantee **Abpromise™** 承诺保证使用 ab39350 于以下的经测试应用

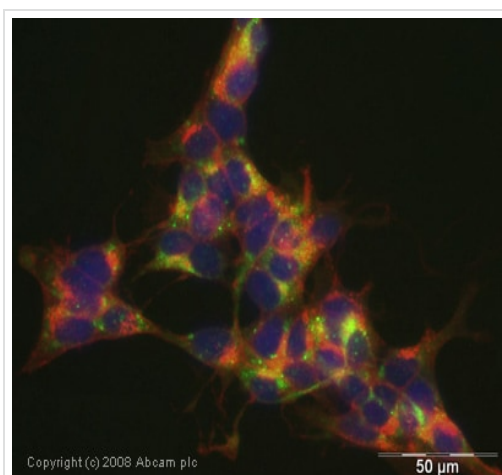
“应用说明”部分 下显示的仅为推荐的起始稀释度;实际最佳的稀释度/浓度应由使用者检定。

| 应用 | Ab评论 | 说明 |
|--------|-----------|----------------------------------------------------------------------------------------------------------------|
| WB | | Use a concentration of 1 µg/ml. Detects a band of approximately 213 kDa (predicted molecular weight: 213 kDa). |
| ICC/IF | ★★★★★ (1) | Use a concentration of 1 µg/ml. |

靶标

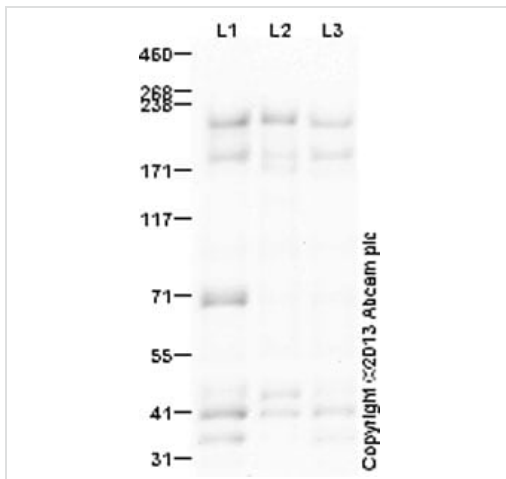
| | |
|-------|--------------------------------------------------------------------------------------------------------------------------------|
| 功能 | Forms a receptor complex with neuropilin-1 and can propagate semaphorin-3A elicited inhibitory signals into cells and neurons. |
| 序列相似性 | Belongs to the plexin family. Contains 4 IPT/TIG domains. Contains 3 PSI domains. Contains 1 Sema domain. |
| 翻译后修饰 | Phosphorylated upon DNA damage, probably by ATM or ATR. |
| 细胞定位 | Membrane. |

图片



ICC/IF image of ab39350 stained human SH-SY5Y cells. The cells were methanol fixed (5 min), permeabilised in TBS-T (20 min) and incubated with the antibody (ab39350, 1µg/ml) for 1h at room temperature. 1%BSA / 10% normal goat serum / 0.3M glycine was used to quench autofluorescence and block non-specific protein-protein interactions. The secondary antibody (green) was Alexa Fluor® 488 goat anti-rabbit IgG (H+L) used at a 1/1000 dilution for 1h. Alexa Fluor® 594 WGA was used to label plasma membranes (red). DAPI was used to stain the cell nuclei (blue).

Immunocytochemistry/ Immunofluorescence - Anti-Plexin A4 antibody (ab39350)



Western blot - Anti-Plexin A4 antibody (ab39350)

All lanes : Anti-Plexin A4 antibody (ab39350) at 1 µg/ml

Lane 1 : Brain (Mouse) Tissue Lysate

Lane 2 : Mouse brain tissue lysate - total protein (0 days) ([ab7188](#))

Lane 3 : Brain (Rat) Tissue Lysate

Lysates/proteins at 20 µg per lane.

Secondary

All lanes : Goat Anti-Rabbit IgG H&L (HRP) ([ab97051](#)) at 1/35000 dilution

Developed using the ECL technique.

Performed under reducing conditions.

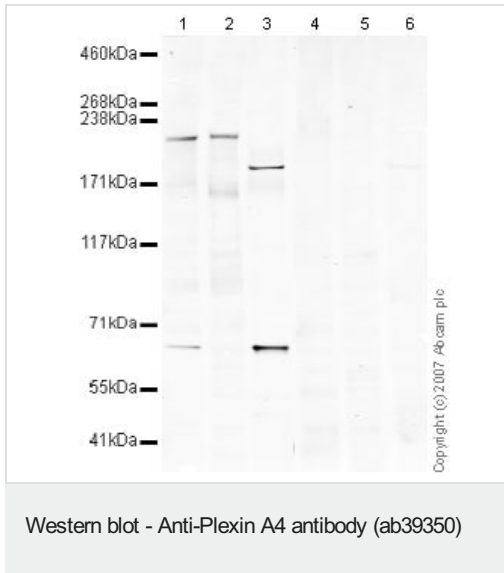
Predicted band size: 213 kDa

Observed band size: 213 kDa

Additional bands at: 190 kDa, 41 kDa, 70 kDa. We are unsure as to the identity of these extra bands.

Exposure time: 8 minutes

This blot was produced using a 3-8% Tris Acetate gel under the TA buffer system. The gel was run at 150V for 60 minutes before being transferred onto a Nitrocellulose membrane at 30V for 70 minutes. The membrane was then blocked for an hour using 3% Milk before being incubated with ab39350 overnight at 4°C. Antibody binding was detected using an anti-rabbit antibody conjugated to HRP, and visualised using ECL development solution [ab133406](#).



All lanes : Anti-Plexin A4 antibody (ab39350) at 1/250 dilution

Lane 1 : Brain (Mouse) Tissue Lysate

Lane 2 : Mouse brain tissue lysate - total protein (0 days) (**ab7188**)

Lane 3 : Dorsal Root Ganglia (Mouse) Tissue Lysate

Lane 4 : Brain (Mouse) Tissue Lysate with Mouse Plexin A4 peptide (**ab39349**) at 1 µg/ml

Lane 5 : Mouse brain tissue lysate - total protein (0 days) (**ab7188**) with Mouse Plexin A4 peptide (**ab39349**) at 1 µg/ml

Lane 6 : Dorsal Root Ganglia (Mouse) Tissue Lysate with Mouse Plexin A4 peptide (**ab39349**) at 1 µg/ml

Lysates/proteins at 10 µg per lane.

Secondary

Lanes 1-2 : IRDye 680 Conjugated Goat Anti-Rabbit IgG (H+L) at 1/10000 dilution

Lanes 3-6 : IRDye 680 Conjugated Goat Anti-Rabbit IgG (H+L) at 1/10000 dilution

Performed under reducing conditions.

Predicted band size: 213 kDa

We are unsure as to the biological basis of the band at 190 kDa. However, it is successfully blocked by peptide (**ab39349**) suggesting this may be a possible isoform of Plexin A4.

Please note: All products are "FOR RESEARCH USE ONLY. NOT FOR USE IN DIAGNOSTIC PROCEDURES"

Our Abpromise to you: Quality guaranteed and expert technical support

- Replacement or refund for products not performing as stated on the datasheet
- Valid for 12 months from date of delivery

- Response to your inquiry within 24 hours
- We provide support in Chinese, English, French, German, Japanese and Spanish
- Extensive multi-media technical resources to help you
- We investigate all quality concerns to ensure our products perform to the highest standards

If the product does not perform as described on this datasheet, we will offer a refund or replacement. For full details of the Abpromise, please visit <https://www.abcam.cn/abpromise> or contact our technical team.

Terms and conditions

- Guarantee only valid for products bought direct from Abcam or one of our authorized distributors