


### Anti-Plexin A1 antibody [EPR3449] ab92346

**重组** RabMAb

★★★★★ **2 Abreviews** **1 References** **3 图像**

#### 概述

产品名称	Anti-Plexin A1抗体[EPR3449]
描述	兔单克隆抗体[EPR3449] to Plexin A1
宿主	Rabbit
特异性	ab92346 is expected to cross react with Plexin A3 and A4 due to 100% immunogen homology with Plexin A3 and 87.5 % with Plexin A4,however not tested experimentally.
经测试应用	<b>适用于:</b> Flow Cyt (Intra), WB <b>不适用于:</b> IHC-P or IP
种属反应性	<b>与反应:</b> Human <b>预测可用于:</b> Mouse, Rat 
免疫原	Synthetic peptide within Human Plexin A1 aa 100-200. The exact sequence is proprietary.
阳性对照	WB: KS62, HUVEC and HepG2 whole cell lysate ( <b>ab7900</b> ); fetal brain tissue lysate Flow Cyt (intra): K562 cells
常规说明	This product is a recombinant monoclonal antibody, which offers several advantages including: <ul style="list-style-type: none"> <li>- High batch-to-batch consistency and reproducibility</li> <li>- Improved sensitivity and specificity</li> <li>- Long-term security of supply</li> <li>- Animal-free production</li> </ul> For more information <b>see here</b> . Our RabMAb <sup>®</sup> technology is a patented hybridoma-based technology for making rabbit monoclonal antibodies. For details on our patents, please refer to <b>RabMAb<sup>®</sup> patents</b> .

#### 性能

形式	Liquid
存放说明	Shipped at 4°C. Upon delivery aliquot and store at -20°C. Avoid repeated freeze / thaw cycles.
存储溶液	pH: 7.20 Preservative: 0.05% Sodium azide Constituents: 0.1% BSA, 40% Glycerol (glycerin, glycerine), 9.85% Tris glycine, 50% Tissue culture supernatant
纯度	Protein A purified

## 应用

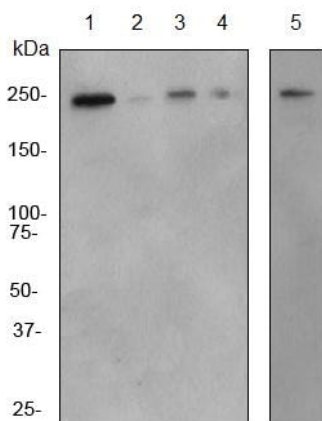
“应用说明”部分下显示的仅为推荐的起始稀释度;实际最佳的稀释度/浓度应由使用者检定。

应用说明 Is unsuitable for IHC-P or IP.

靶标

细胞定位 Cell Membrane

图片



Western blot - Anti-Plexin A1 antibody [EPR3449]  
(ab92346)

**All lanes :** Anti-Plexin A1 antibody [EPR3449] (ab92346) at  
1/1000 dilution

**Lane 1 :** K562 cell lysate

**Lane 2 :** 293T cell lysate

**Lane 3 :** HUVEC cell lysate

**Lane 4 :** HepG2 cell lysate

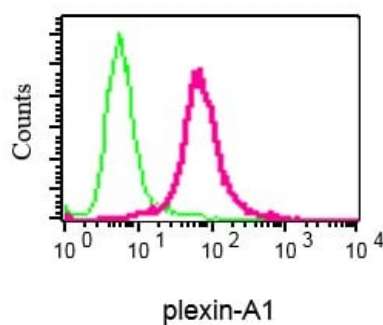
**Lane 5 :** Fetal brain tissue lysate

Lysates/proteins at 10 µg per lane.

## Secondary

**All lanes :** HRP labelled goat anti-rabbit antibody at 1/2000 dilution

**Predicted band size:** 211 kDa



Flow Cytometry (Intracellular) - Anti-Plexin A1  
antibody [EPR3449] (ab92346)

Intracellular Flow Cytometry analysis of permeabilized K562 cells  
labeling Plexin A1 with ab92346 at 1/50 (red) compared to a rabbit  
IgG (negative control) (green).

## Why choose a recombinant antibody?



**Research with  
confidence**  
Consistent and  
reproducible results



**Long-term and  
scalable supply**  
Recombinant  
technology



**Success from the  
first experiment**  
Confirmed  
specificity



**Ethical standards  
compliant**  
Animal-free  
production

Anti-Plexin A1 antibody [EPR3449] (ab92346)

### **Our Abpromise to you: Quality guaranteed and expert technical support**

---

- Replacement or refund for products not performing as stated on the datasheet
- Valid for 12 months from date of delivery
- Response to your inquiry within 24 hours
  
- We provide support in Chinese, English, French, German, Japanese and Spanish
- Extensive multi-media technical resources to help you
- We investigate all quality concerns to ensure our products perform to the highest standards

If the product does not perform as described on this datasheet, we will offer a refund or replacement. For full details of the Abpromise, please visit <https://www.abcam.cn/abpromise> or contact our technical team.

### **Terms and conditions**

---

- Guarantee only valid for products bought direct from Abcam or one of our authorized distributors