


Anti-Plastin L antibody [EPR4277] ab109124

重组 RabMAb

1 Abreviews 3 References 3 图像

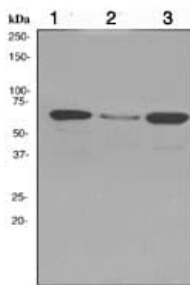
概述

产品名称	Anti-Plastin L抗体[EPR4277]
描述	兔单克隆抗体[EPR4277] to Plastin L
宿主	Rabbit
经测试应用	适用于: WB, IHC-P 不适用于: Flow Cyt or IP
种属反应性	与反应: Human 预测可用于: Mouse, Rat 
免疫原	Synthetic peptide. This information is proprietary to Abcam and/or its suppliers.
阳性对照	THP1, K562 and Jurkat whole cell lysate ( <a href="#">ab7899</a> ); Human tonsil tissue
常规说明	<p>This product is a recombinant monoclonal antibody, which offers several advantages including:</p> <ul style="list-style-type: none"><li>- High batch-to-batch consistency and reproducibility</li><li>- Improved sensitivity and specificity</li><li>- Long-term security of supply</li><li>- Animal-free production</li></ul> <p>For more information <a href="#">see here</a>.</p> <p>Our RabMAb<sup>®</sup> technology is a patented hybridoma-based technology for making rabbit monoclonal antibodies. For details on our patents, please refer to <a href="#">RabMAb<sup>®</sup> patents</a>.</p>

性能

形式	Liquid
存放说明	Shipped at 4°C. Store at -20°C. Stable for 12 months at -20°C.
存储溶液	pH: 7.20 Preservative: 0.05% Sodium azide Constituents: 0.1% BSA, 40% Glycerol (glycerin, glycerine), 9.85% Tris glycine, 50% Tissue culture supernatant
纯度	Protein A purified
克隆	单克隆
克隆编号	EPR4277

同种型	IgG	
应用		
<b>The Abpromise guarantee</b> <b>Abpromise™</b> 承诺保证使用ab109124于以下的经测试应用		
“应用说明”部分 下显示的仅为推荐的起始稀释度;实际最佳的稀释度/浓度应由使用者检定。		
应用	Ab评论	说明
WB		1/1000 - 1/10000. Predicted molecular weight: 70 kDa.
IHC-P		1/100 - 1/250. Perform heat mediated antigen retrieval before commencing with IHC staining protocol. (Heat to 98°C allow to cool for 10-20 min).
应用说明	Is unsuitable for Flow Cyt or IP.	
靶标		
功能	Actin-binding protein. Plays a role in the activation of T-cells in response to costimulation through TCR/CD3 and CD2 or CD28. Modulates the cell surface expression of IL2RA/CD25 and CD69.	
组织特异性	Detected in intestinal microvilli, hair cell stereocilia, and fibroblast filopodia, in spleen and other lymph node-containing organs. Expressed in peripheral blood T lymphocytes, neutrophils, monocytes, B lymphocytes, and myeloid cells.	
序列相似性	Contains 2 actin-binding domains. Contains 4 CH (calponin-homology) domains. Contains 2 EF-hand domains.	
翻译后修饰	Phosphorylated on a serine residue in response to costimulation through TCR/CD3 and CD2 or CD28. Serine phosphorylation promotes association with the actin cytoskeleton and targeting to peripheral cell projections. The N-terminus is blocked.	
细胞定位	Cytoplasm > cytoskeleton. Cell junction. Cell projection. Cell projection > ruffle membrane. Relocalizes to the immunological synapse between peripheral blood T lymphocytes and antibody-presenting cells in response to costimulation through TCR/CD3 and CD2 or CD28. Associated with the actin cytoskeleton at membrane ruffles (By similarity). Relocalizes to actin-rich cell projections upon serine phosphorylation.	
图片		



Western blot - Anti-Plastin L antibody [EPR4277]  
(ab109124)

**All lanes :** Anti-Plastin L antibody [EPR4277] (ab109124) at  
1/1000 dilution

**Lane 1 :** THP1 cell lysates

**Lane 2 :** K562 cell lysates

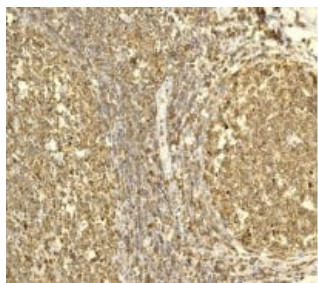
**Lane 3 :** Jurkat cell lysates

Lysates/proteins at 10 µg per lane.

### Secondary

**All lanes :** HRP labelled Goat anti-Rabbit at 1/2000 dilution

**Predicted band size:** 70 kDa



Immunohistochemistry (Formalin/PFA-fixed paraffin-  
embedded sections) - Anti-Plastin L antibody  
[EPR4277] (ab109124)

ab109124, at 1/100 dilution staining Plastin L in paraffin-embedded  
Human tonsil tissue, by Immunohistochemistry.

Perform heat mediated antigen retrieval before commencing with  
IHC staining protocol.

### Why choose a recombinant antibody?



**Research with  
confidence**  
Consistent and  
reproducible results



**Long-term and  
scalable supply**  
Recombinant  
technology



**Success from the  
first experiment**  
Confirmed  
specificity



**Ethical standards  
compliant**  
Animal-free  
production

Anti-Plastin L antibody [EPR4277] (ab109124)

**Please note:** All products are "FOR RESEARCH USE ONLY. NOT FOR USE IN DIAGNOSTIC PROCEDURES"

### **Our Abpromise to you: Quality guaranteed and expert technical support**

---

- Replacement or refund for products not performing as stated on the datasheet
- Valid for 12 months from date of delivery
- Response to your inquiry within 24 hours
- We provide support in Chinese, English, French, German, Japanese and Spanish
- Extensive multi-media technical resources to help you
- We investigate all quality concerns to ensure our products perform to the highest standards

If the product does not perform as described on this datasheet, we will offer a refund or replacement. For full details of the Abpromise, please visit <https://www.abcam.cn/abpromise> or contact our technical team.

### **Terms and conditions**

---

- Guarantee only valid for products bought direct from Abcam or one of our authorized distributors