

Anti-Plasminogen antibody ab154560

13 References **7 图像**

概述

产品名称	Anti-Plasminogen抗体
描述	兔多克隆抗体to Plasminogen
宿主	Rabbit
经测试应用	适用于: WB, IHC-P, ICC/IF
种属反应性	与反应: Mouse, Rat, Human
免疫原	Recombinant fragment corresponding to a region within amino acids 84-434 of Human Plasminogen (Uniprot ID: P00747).
阳性对照	Jurkat, Raji, K562, BCL1, PC12 and Rat2 whole cell lysates, HeLa cells, Human C2C12 xenograft tissue and hepatoma tissue
常规说明	<p>The Life Science industry has been in the grips of a reproducibility crisis for a number of years. Abcam is leading the way in addressing this with our range of recombinant monoclonal antibodies and knockout edited cell lines for gold-standard validation. Please check that this product meets your needs before purchasing.</p> <p>If you have any questions, special requirements or concerns, please send us an inquiry and/or contact our Support team ahead of purchase. Recommended alternatives for this product can be found below, along with publications, customer reviews and Q&As</p>

性能

形式	Liquid
存放说明	Shipped at 4°C. Upon delivery aliquot. Store at -20°C or -80°C. Avoid freeze / thaw cycle.
存储溶液	<p>pH: 7.00</p> <p>Preservative: 0.025% Proclin 300</p> <p>Constituents: 78% PBS, 1% BSA, 20% Glycerol (glycerin, glycerine)</p>
纯度	Immunogen affinity purified
克隆	多克隆
同种型	IgG

应用

The Abpromise guarantee

Abpromise™承诺保证使用ab154560于以下的经测试应用

“应用说明”部分 下显示的仅为推荐的起始稀释度;实际最佳的稀释度/浓度应由使用者检定。

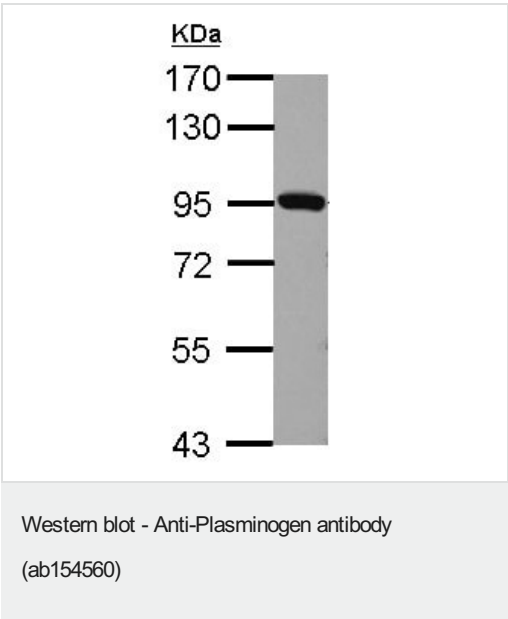
应用	Ab评论	说明
WB		1/500 - 1/3000. Predicted molecular weight: 90 kDa.
IHC-P		1/100 - 1/1000.
ICC/IF		1/100 - 1/1000.

靶标	
功能	<p>Plasmin dissolves the fibrin of blood clots and acts as a proteolytic factor in a variety of other processes including embryonic development, tissue remodeling, tumor invasion, and inflammation. In ovulation, weakens the walls of the Graafian follicle. It activates the urokinase-type plasminogen activator, collagenases and several complement zymogens, such as C1 and C5. Cleavage of fibronectin and laminin leads to cell detachment and apoptosis. Also cleaves fibrin, thrombospondin and von Willebrand factor. Its role in tissue remodeling and tumor invasion may be modulated by CSPG4. Binds to cells.</p> <p>Angiostatin is an angiogenesis inhibitor that blocks neovascularization and growth of experimental primary and metastatic tumors in vivo.</p>
组织特异性	<p>Present in plasma and many other extracellular fluids. It is synthesized in the liver.</p>
疾病相关	<p>Defects in PLG are a cause of susceptibility to thrombosis (THR) [MIM:188050]. It is a multifactorial disorder of hemostasis characterized by abnormal platelet aggregation in response to various agents and recurrent thrombi formation.</p> <p>Defects in PLG are the cause of plasminogen deficiency (PLGD) [MIM:217090]. PLGD is characterized by decreased serum plasminogen activity. Two forms of the disorder are distinguished: type 1 deficiency is additionally characterized by decreased plasminogen antigen levels and clinical symptoms, whereas type 2 deficiency, also known as dysplasminogenemia, is characterized by normal, or slightly reduced antigen levels, and absence of clinical manifestations. Plasminogen deficiency type 1 results in markedly impaired extracellular fibrinolysis and chronic mucosal pseudomembranous lesions due to subepithelial fibrin deposition and inflammation. The most common clinical manifestation of type 1 deficiency is ligneous conjunctivitis in which pseudomembranes formation on the palpebral surfaces of the eye progresses to white, yellow-white, or red thick masses with a wood-like consistency that replace the normal mucosa.</p>
序列相似性	<p>Belongs to the peptidase S1 family. Plasminogen subfamily.</p> <p>Contains 5 kringle domains.</p> <p>Contains 1 PAN domain.</p> <p>Contains 1 peptidase S1 domain.</p>
结构域	<p>Kringle domains mediate interaction with CSPG4.</p>
翻译后修饰	<p>N-linked glycan contains N-acetylactosamine and sialic acid. O-linked glycans consist of Gal-GalNAc disaccharide modified with up to 2 sialic acid residues (microheterogeneity).</p> <p>In the presence of the inhibitor, the activation involves only cleavage after Arg-580, yielding two chains held together by two disulfide bonds. In the absence of the inhibitor, the activation involves additionally the removal of the activation peptide.</p>
细胞定位	<p>Secreted. Locates to the cell surface where it is proteolytically cleaved to produce the active plasmin. Interaction with HRG tethers it to the cell surface.</p>

形式

Cleaved into the following 5 chains: 1.Plasmin heavy chain A2.Activation peptide3.Angiostatin4.Plasmin heavy chain A, short form5. Plasmin light chain B

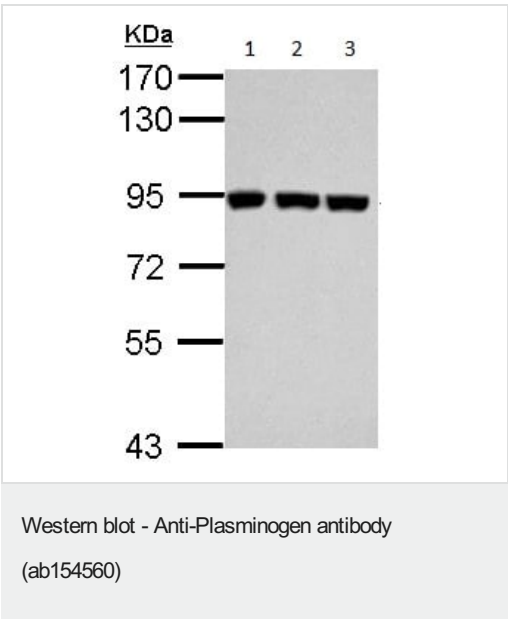
图片



Anti-Plasminogen antibody (ab154560) at 1/1000 dilution + BCL1 whole cell lysate at 30 µg

Predicted band size: 90 kDa

7.5% SDS PAGE



All lanes : Anti-Plasminogen antibody (ab154560) at 1/1000 dilution

Lane 1 : Jurkat whole cell lysate

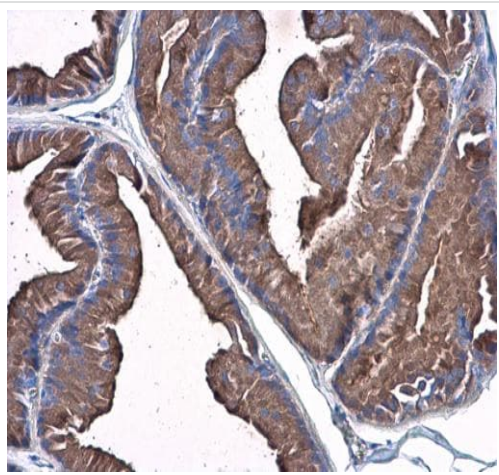
Lane 2 : Raji whole cell lysate

Lane 3 : K562 whole cell lysate

Lysates/proteins at 30 µg per lane.

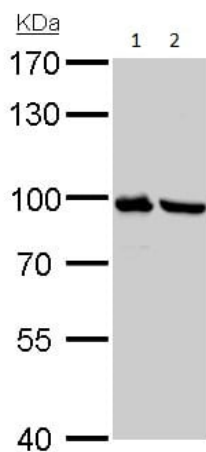
Predicted band size: 90 kDa

7.5% SDS PAGE



Immunohistochemistry (Formalin/PFA-fixed paraffin-embedded sections) - Anti-Plasminogen antibody (ab154560)

Immunohistochemical analysis of paraffin-embedded Rat prostate tissue, labeling Plasminogen using ab154560 at a 1/500 dilution.



Western blot - Anti-Plasminogen antibody (ab154560)

All lanes : Anti-Plasminogen antibody (ab154560) at 1/1000 dilution

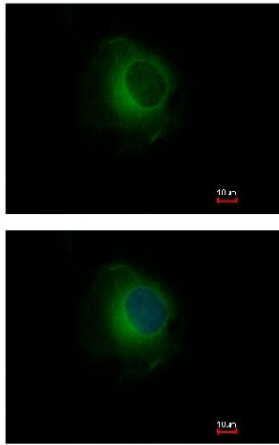
Lane 1 : PC12 whole cell lysate

Lane 2 : Rat2 whole cell lysate

Lysates/proteins at 30 µg per lane.

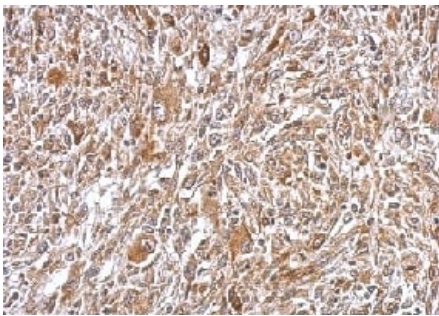
Predicted band size: 90 kDa

7.5% SDS PAGE



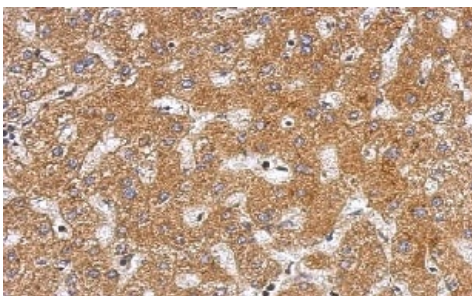
Immunocytochemistry/ Immunofluorescence - Anti-Plasminogen antibody (ab154560)

Immunofluorescence analysis of methanol-fixed HeLa cells, labeling Plasminogen using ab154560 at a 1/500 dilution. Lower image is costained with Hoechst 33342.



Immunohistochemistry (Formalin/PFA-fixed paraffin-embedded sections) - Anti-Plasminogen antibody (ab154560)

Immunohistochemical analysis of paraffin-embedded Human C2C12 xenograft, labeling Plasminogen using ab154560 at a 1/500 dilution.



Immunohistochemistry (Formalin/PFA-fixed paraffin-embedded sections) - Anti-Plasminogen antibody (ab154560)

Immunohistochemical analysis of paraffin-embedded human Hepatoma tissue, labeling Plasminogen using ab154560 at a 1/500 dilution.

Please note: All products are "FOR RESEARCH USE ONLY. NOT FOR USE IN DIAGNOSTIC PROCEDURES"

Our Abpromise to you: Quality guaranteed and expert technical support

- Replacement or refund for products not performing as stated on the datasheet
- Valid for 12 months from date of delivery
- Response to your inquiry within 24 hours
- We provide support in Chinese, English, French, German, Japanese and Spanish
- Extensive multi-media technical resources to help you
- We investigate all quality concerns to ensure our products perform to the highest standards

If the product does not perform as described on this datasheet, we will offer a refund or replacement. For full details of the Abpromise, please visit <https://www.abcam.cn/abpromise> or contact our technical team.

Terms and conditions

- Guarantee only valid for products bought direct from Abcam or one of our authorized distributors