

### Anti-Plasma Cell antibody [SPM310], prediluted ab18096

#### 1 图像

#### 概述

产品名称	Anti-Plasma Cell抗体[SPM310], prediluted
描述	小鼠单克隆抗体[SPM310] to Plasma Cell , prediluted
宿主	Mouse
特异性	We have data to indicate that this antibody may not cross react with Rat. However, this has not been conclusively tested and expression levels may vary in certain cell lines/tissues.
经测试应用	适用于: IHC-P
种属反应性	与反应: Human
免疫原	Tissue/ cell preparation (Human).
阳性对照	Tonsil or lymph node.
常规说明	<p>The concentration of this prediluted antibody is 4µg/ml.</p> <p>The Life Science industry has been in the grips of a reproducibility crisis for a number of years. Abcam is leading the way in addressing this with our range of recombinant monoclonal antibodies and knockout edited cell lines for gold-standard validation. Please check that this product meets your needs before purchasing.</p> <p>If you have any questions, special requirements or concerns, please send us an inquiry and/or contact our Support team ahead of purchase. Recommended alternatives for this product can be found below, along with publications, customer reviews and Q&amp;As</p>

#### 性能

形式	Liquid
存放说明	Shipped at 4°C. Store at +4°C.
存储溶液	pH: 7.2 Preservative: 0.1% Sodium azide
克隆	单克隆
克隆编号	SPM310
同种型	IgG2a
轻链类型	kappa

## The Abpromise guarantee **Abpromise™**承诺保证使用ab18096于以下的经测试应用

“应用说明”部分 下显示的仅为推荐的起始稀释度;实际最佳的稀释度/浓度应由使用者检定。

应用	Ab评论	说明
IHC-P		

### 应用说明

IHC-P: Prediluted. Perform enzymatic antigen retrieval before commencing with IHC staining protocol with pepsin at 1 mg/ml Tris-HCl, pH 2.0 for 15 min at RT or 10 min at 37C.

Not tested in other applications.

Optimal dilutions/concentrations should be determined by the end user.

## 靶标

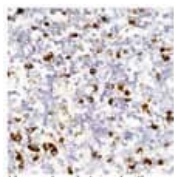
### 相关性

Plasma cells (also called plasma B cells or plasmocytes) are cells of the immune system that secrete antibodies.

### 细胞定位

Cytoplasmic

## 图片



Human tonsil stained with ab18096.

Immunohistochemistry (Formalin/PFA-fixed paraffin-embedded sections) - Anti-Plasma Cell antibody [SPM310], prediluted (ab18096)

**Please note:** All products are "FOR RESEARCH USE ONLY. NOT FOR USE IN DIAGNOSTIC PROCEDURES"

## Our Abpromise to you: Quality guaranteed and expert technical support

- Replacement or refund for products not performing as stated on the datasheet
- Valid for 12 months from date of delivery
- Response to your inquiry within 24 hours
- We provide support in Chinese, English, French, German, Japanese and Spanish
- Extensive multi-media technical resources to help you
- We investigate all quality concerns to ensure our products perform to the highest standards

If the product does not perform as described on this datasheet, we will offer a refund or replacement. For full details of the Abpromise, please visit <https://www.abcam.cn/abpromise> or contact our technical team.

## Terms and conditions

---

- Guarantee only valid for products bought direct from Abcam or one of our authorized distributors