

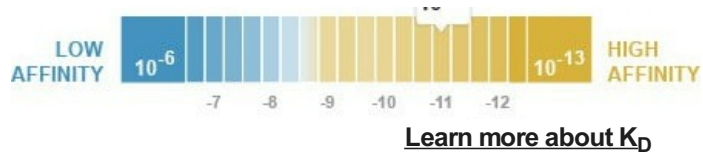
Anti-Placental alkaline phosphatase (PLAP) antibody [EPR6141] ab133602

敲除验证 重组 RabMAb

★★★★★ 2 Abreviews 17 References 12 图像

概述	
产品名称	Anti-Placental alkaline phosphatase (PLAP)抗体[EPR6141]
描述	兔单克隆抗体[EPR6141] to Placental alkaline phosphatase (PLAP)
宿主	Rabbit
经测试应用	适用于: WB, IHC-P 不适用于: Flow Cyt, ICC/IF or IP
种属反应性	与反应: Human
免疫原	Synthetic peptide within Human Placental alkaline phosphatase (PLAP) aa 150-250 (extracellular). The exact sequence is proprietary.
阳性对照	WB: Human placenta, and seminoma tissue lysates, and HeLa cell lysate. IHC-P: Human dysgerminoma and placenta tissues.
常规说明	<p>This product is a recombinant monoclonal antibody, which offers several advantages including:</p> <ul style="list-style-type: none">- High batch-to-batch consistency and reproducibility- Improved sensitivity and specificity- Long-term security of supply- Animal-free production <p>For more information see here.</p> <p>Our RabMAb[®] technology is a patented hybridoma-based technology for making rabbit monoclonal antibodies. For details on our patents, please refer to RabMAb[®] patents.</p> <p>Mouse, Rat: We have preliminary internal testing data to indicate this antibody may not react with these species. Please contact us for more information.</p>

性能	
形式	Liquid
存放说明	Shipped at 4°C. Store at +4°C short term (1-2 weeks). Upon delivery aliquot. Store at -20°C. Stable for 12 months at -20°C.
解离常数 (K _D)	K _D = 5.10 x 10 ⁻¹¹ M



存储溶液	pH: 7.20 Preservative: 0.01% Sodium azide Constituents: 59% PBS, 40% Glycerol (glycerin, glycerine), 0.5% BSA
纯度	Protein A purified
克隆	单克隆
克隆编号	EPR6141
同种型	IgG

应用

The Abpromise guarantee **Abpromise™** 承诺保证使用 ab133602 于以下的经测试应用

“应用说明”部分 下显示的仅为推荐的起始稀释度;实际最佳的稀释度/浓度应由使用者检定。

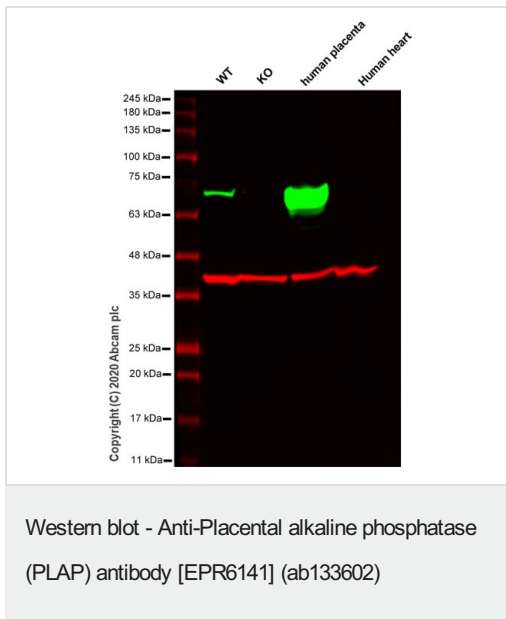
应用	Ab 评论	说明
WB	★ ★ ★ ★ ★ (1)	1/10000 - 1/50000. Detects a band of approximately 70 kDa (predicted molecular weight: 58 kDa).
IHC-P		1/250 - 1/500. Perform heat mediated antigen retrieval before commencing with IHC staining protocol. ab172730 - Rabbit monoclonal IgG, is suitable for use as an isotype control with this antibody.

应用说明 Is unsuitable for Flow Cyt, ICC/IF or IP.

靶标

序列相似性	Belongs to the alkaline phosphatase family.
细胞定位	Cell membrane.

图片



All lanes : Anti-Placental alkaline phosphatase (PLAP) antibody [EPR6141] (ab133602) at 1/1000 dilution

Lane 1 : Wild-type HeLa cell lysate

Lane 2 : ALPP knockout HeLa cell lysate

Lane 3 : Human placenta tissue lysate

Lane 4 : Human heart tissue lysate

Lysates/proteins at 20 µg per lane.

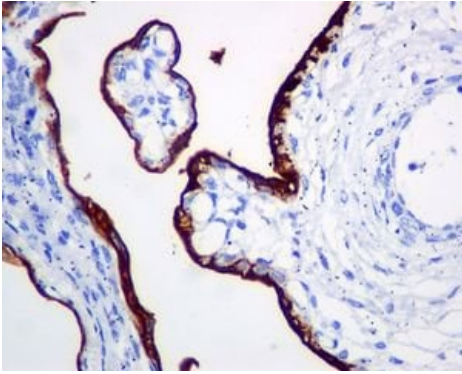
Performed under reducing conditions.

Predicted band size: 58 kDa

Observed band size: 70 kDa

Lanes 1-4: Merged signal (red and green). Green - ab133602 observed at 70 kDa. Red - loading control, **ab8245** observed at 37 kDa.

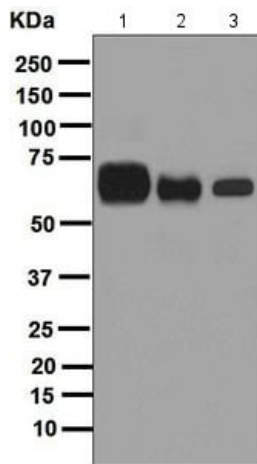
ab133602 Anti-Placental alkaline phosphatase (PLAP) antibody [EPR6141] was shown to specifically react with Placental alkaline phosphatase (PLAP) in wild-type HeLa cells. Loss of signal was observed when knockout cell line **ab261763** (knockout cell lysate **ab256836**) was used. Wild-type and Placental alkaline phosphatase (PLAP) knockout samples were subjected to SDS-PAGE. ab133602 and Anti-GAPDH antibody [6C5] - Loading Control (**ab8245**) were incubated overnight at 4°C at 1 in 1000 dilution and 1 in 20000 dilution respectively. Blots were developed with Goat anti-Rabbit IgG H&L (IRDye® 800CW) preadsorbed (**ab216773**) and Goat anti-Mouse IgG H&L (IRDye® 680RD) preadsorbed (**ab216776**) secondary antibodies at 1 in 10000 dilution for 1 hour at room temperature before imaging.



Immunohistochemistry (Formalin/PFA-fixed paraffin-embedded sections) - Anti-Placental alkaline phosphatase (PLAP) antibody [EPR6141] (ab133602)

Immunohistochemical analysis of paraffin-embedded Human placenta tissue labelling Placental alkaline phosphatase (PLAP) with ab133602 at 1/250.

Perform heat mediated antigen retrieval before commencing with IHC staining protocol.



Western blot - Anti-Placental alkaline phosphatase (PLAP) antibody [EPR6141] (ab133602)

All lanes : Anti-Placental alkaline phosphatase (PLAP) antibody [EPR6141] (ab133602) at 1/10000 dilution

Lane 1 : Human placenta tissue lysate

Lane 2 : Human seminoma tissue lysate

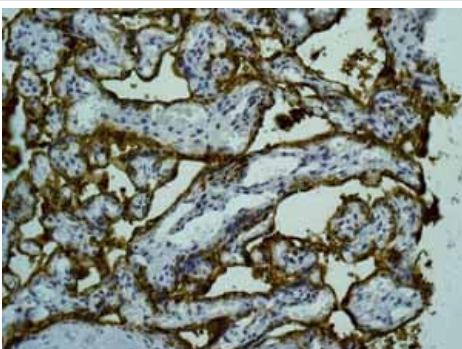
Lane 3 : HeLa cell lysate at 10 µg

Secondary

All lanes : HRP labelled goat anti-rabbit at 1/2000 dilution

Predicted band size: 58 kDa

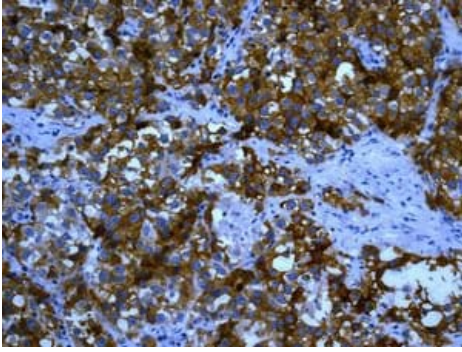
Observed band size: 70 kDa



Immunohistochemistry (Formalin/PFA-fixed paraffin-embedded sections) - Anti-Placental alkaline phosphatase (PLAP) antibody [EPR6141] (ab133602)

ab133602 showing positive staining in Normal placenta tissue.

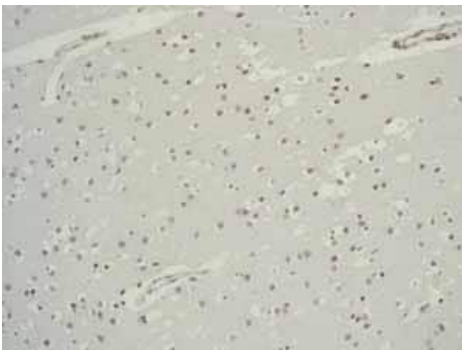
Perform heat mediated antigen retrieval before commencing with IHC staining protocol.



Immunohistochemistry (Formalin/PFA-fixed paraffin-embedded sections) - Anti-Placental alkaline phosphatase (PLAP) antibody [EPR6141] (ab133602)

Immunohistochemical analysis of paraffin-embedded Human dysgerminoma tissue labelling Placental alkaline phosphatase (PLAP) with ab133602 at 1/250.

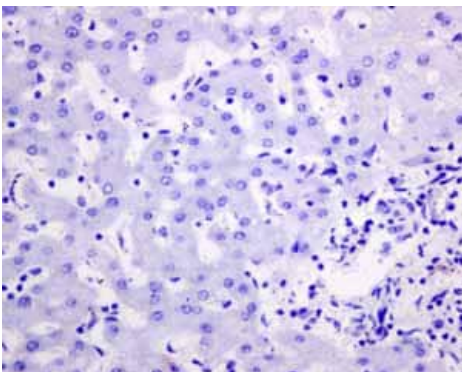
Perform heat mediated antigen retrieval before commencing with IHC staining protocol.



Immunohistochemistry (Formalin/PFA-fixed paraffin-embedded sections) - Anti-Placental alkaline phosphatase (PLAP) antibody [EPR6141] (ab133602)

ab133602 showing negative staining in Normal brain tissue.

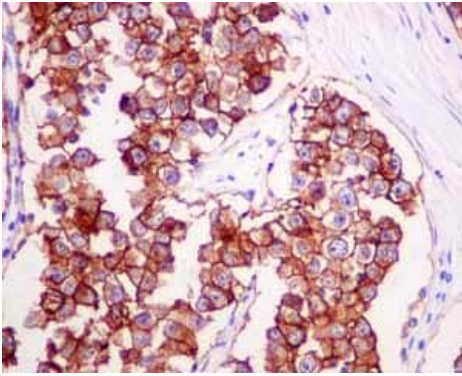
Perform heat mediated antigen retrieval before commencing with IHC staining protocol.



Immunohistochemistry (Formalin/PFA-fixed paraffin-embedded sections) - Anti-Placental alkaline phosphatase (PLAP) antibody [EPR6141] (ab133602)

ab133602 showing negative staining in Normal liver tissue.

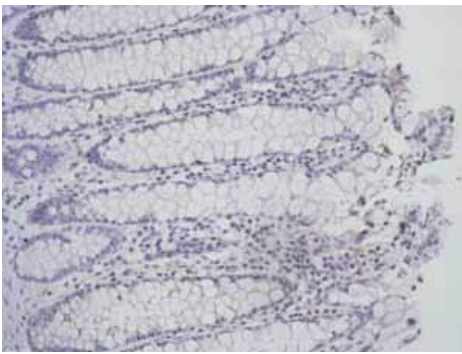
Perform heat mediated antigen retrieval before commencing with IHC staining protocol.



Immunohistochemistry (Formalin/PFA-fixed paraffin-embedded sections) - Anti-Placental alkaline phosphatase (PLAP) antibody [EPR6141] (ab133602)

ab133602 showing positive staining in Seminoma tissue.

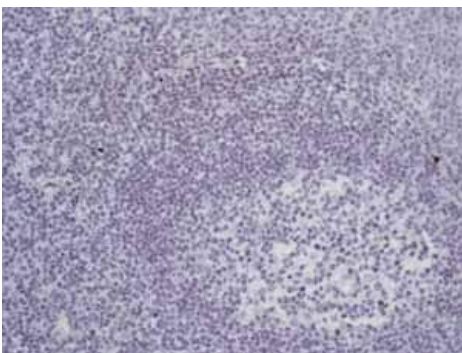
Perform heat mediated antigen retrieval before commencing with IHC staining protocol.



Immunohistochemistry (Formalin/PFA-fixed paraffin-embedded sections) - Anti-Placental alkaline phosphatase (PLAP) antibody [EPR6141] (ab133602)

ab133602 showing negative staining in Normal colon tissue.

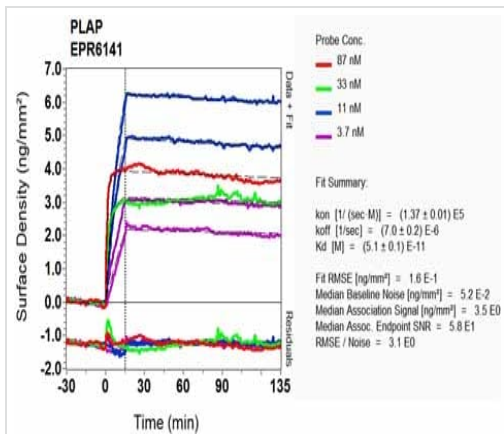
Perform heat mediated antigen retrieval before commencing with IHC staining protocol.



Immunohistochemistry (Formalin/PFA-fixed paraffin-embedded sections) - Anti-Placental alkaline phosphatase (PLAP) antibody [EPR6141] (ab133602)

ab133602 showing negative staining in Normal tonsil tissue.

Perform heat mediated antigen retrieval before commencing with IHC staining protocol.



OI-RD Scanning - Anti-Placental alkaline
 phosphatase (PLAP) antibody [EPR6141]
 (ab133602)

Equilibrium disassociation constant (K_D)

Learn more about K_D

[Click here to learn more about \$K_D\$](#)

Why choose α recombinant antibody?



Research with confidence
 Consistent and reproducible results



Long-term and scalable supply
 Recombinant technology



Success from the first experiment
 Confirmed specificity



Ethical standards compliant
 Animal-free production

Anti-Placental alkaline phosphatase (PLAP)
 antibody [EPR6141] (ab133602)

Please note: All products are "FOR RESEARCH USE ONLY. NOT FOR USE IN DIAGNOSTIC PROCEDURES"

Our Abpromise to you: Quality guaranteed and expert technical support

- Replacement or refund for products not performing as stated on the datasheet
- Valid for 12 months from date of delivery
- Response to your inquiry within 24 hours
- We provide support in Chinese, English, French, German, Japanese and Spanish
- Extensive multi-media technical resources to help you
- We investigate all quality concerns to ensure our products perform to the highest standards

If the product does not perform as described on this datasheet, we will offer a refund or replacement. For full details of the Abpromise, please visit <https://www.abcam.cn/abpromise> or contact our technical team.

Terms and conditions

- Guarantee only valid for products bought direct from Abcam or one of our authorized distributors