


Anti-PLA2R antibody ab99466

★★★★★ [1 Abreviews](#) [2 图像](#)

概述

产品名称	Anti-PLA2R抗体
描述	山羊多克隆抗体to PLA2R
宿主	Goat
特异性	ab99466 is expected to recognize both isoforms (NP_031392.3; NP_001007268.1).
经测试应用	适用于: WB
种属反应性	与反应: Human 预测可用于: Rabbit, Cow, Orangutan 
免疫原	Synthetic peptide: C-EKKKDTPKQHGT , corresponding to internal sequence amino acids 946-957 of Human PLA2R (NP_031392.3; NP_001007268.1).

 [Run BLAST with](#)

 [Run BLAST with](#)

常规说明

The Life Science industry has been in the grips of a reproducibility crisis for a number of years. Abcam is leading the way in addressing this with our range of recombinant monoclonal antibodies and knockout edited cell lines for gold-standard validation. Please check that this product meets your needs before purchasing.

If you have any questions, special requirements or concerns, please send us an inquiry and/or contact our Support team ahead of purchase. Recommended alternatives for this product can be found below, along with publications, customer reviews and Q&As

性能

形式	Liquid
存放说明	Shipped at 4°C. Upon delivery aliquot and store at -20°C. Avoid repeated freeze / thaw cycles.
存储溶液	pH: 7.30 Preservative: 0.02% Sodium azide Constituents: 0.5% BSA, Tris buffered saline
纯度	Immunogen affinity purified
纯化说明	ab99466 was purified from goat serum by ammonium sulphate precipitation followed by antigen affinity chromatography using the immunizing peptide.

克隆 多克隆
同种型 IgG

应用

The Abpromise guarantee **Abpromise™** 承诺保证使用ab99466于以下的经测试应用

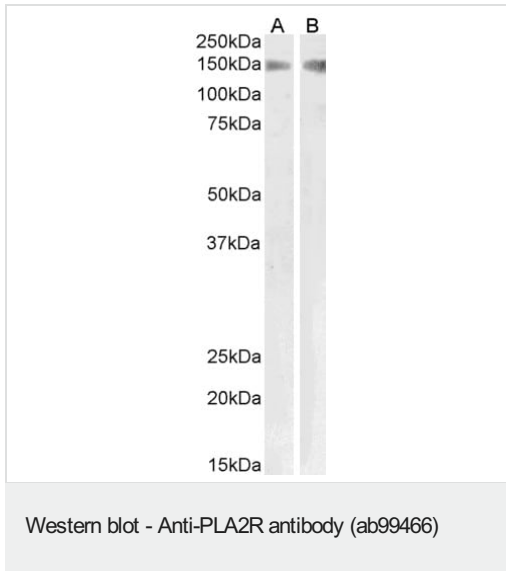
“应用说明”部分 下显示的仅为推荐的起始稀释度;实际最佳的稀释度/浓度应由使用者检定。

应用	Ab评论	说明
WB		Use a concentration of 1 - 3 µg/ml. Predicted molecular weight: 153 kDa. 1 hour primary incubation is recommended for this product.

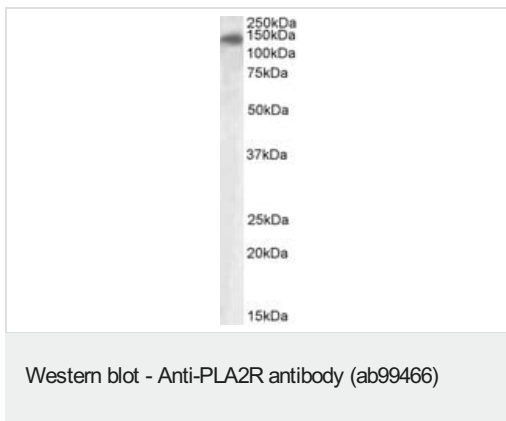
靶标

功能	Receptor for secretory phospholipase A2 (sPLA2). Acts as a receptor for phospholipase sPLA2-IB/PLA2G1B but not sPLA2-IIA/PLA2G2A. Also able to bind to snake PA2-like toxins. Although its precise function remains unclear, binding of sPLA2 to its receptor participates in both positive and negative regulation of sPLA2 functions as well as clearance of sPLA2. Binding of sPLA2-IB/PLA2G1B induces various effects depending on the cell type, such as activation of the mitogen-activated protein kinase (MAPK) cascade to induce cell proliferation, the production of lipid mediators, selective release of arachidonic acid in bone marrow-derived mast cells. In neutrophils, binding of sPLA2-IB/PLA2G1B can activate p38 MAPK to stimulate elastase release and cell adhesion. May be involved in responses in proinflammatory cytokine productions during endotoxic shock. Also has endocytic properties and rapidly internalizes sPLA2 ligands, which is particularly important for the clearance of extracellular sPLA2s to protect their potent enzymatic activities. The soluble secretory phospholipase A2 receptor form is circulating and acts as a negative regulator of sPLA2 functions by blocking the biological functions of sPLA2-IB/PLA2G1B.
组织特异性	Present in lung macrophage (at protein level). Highly expressed in kidney. Also expressed in pancreas, amnion, choriodecidua and placenta. Isoform 2 is expressed at much lower level.
序列相似性	Contains 8 C-type lectin domains. Contains 1 fibronectin type-II domain. Contains 1 ricin B-type lectin domain.
结构域	C-type lectin domains 3-5 mediate the interaction with phospholipase PLA2G1B. The endocytosis signal probably mediates endocytosis via clathrin-coated pits.
翻译后修饰	The secretory phospholipase A2 receptor form may be produced by the action of metalloproteinases. It contains all extracellular domains and only lacks transmembrane and cytosolic regions. It is however unclear whether this form is produced by proteolytic cleavage as suggested by some experiments, or by alternative splicing, as in the case of isoform 2 that shares all characteristics of secretory phospholipase A2 receptor form.
细胞定位	Secreted and Cell membrane.

图片



Western Blot analysis showing approximate 150kDa band observed in Human Kidney and Pig Lung lysates.



Anti-PLA2R antibody (ab99466) at 1 µg/ml + Human Ileum lysate at 35 µg

Predicted band size: 153 kDa

Please note: All products are "FOR RESEARCH USE ONLY. NOT FOR USE IN DIAGNOSTIC PROCEDURES"

Our Abpromise to you: Quality guaranteed and expert technical support

- Replacement or refund for products not performing as stated on the datasheet
- Valid for 12 months from date of delivery
- Response to your inquiry within 24 hours
- We provide support in Chinese, English, French, German, Japanese and Spanish
- Extensive multi-media technical resources to help you
- We investigate all quality concerns to ensure our products perform to the highest standards

If the product does not perform as described on this datasheet, we will offer a refund or replacement. For full details of the Abpromise, please visit <https://www.abcam.cn/abpromise> or contact our technical team.

Terms and conditions

- Guarantee only valid for products bought direct from Abcam or one of our authorized distributors