



Anti-PLA2R antibody [12-6-5] ab211490

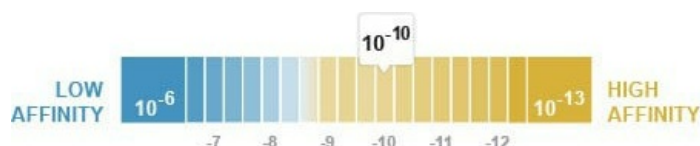
[3 References](#) [6 图像](#)

概述

产品名称	Anti-PLA2R抗体[12-6-5]
描述	小鼠单克隆抗体[12-6-5] to PLA2R
宿主	Mouse
经测试应用	适用于: WB, Flow Cyt, ICC/IF, IHC-P
种属反应性	与反应: Human
免疫原	Recombinant fragment corresponding to Human PLA2R aa 1-700. corresponding to extracellular sequence NC3 (containing domains N-terminal Cysteine rich-FibII-CTLD1-CTLD2-CTLD3) expressed in HEK 293-EBNA-1 cells Database link: Q13018
	 Run BLAST with  Run BLAST with
阳性对照	WB: Recombinant extracellular domain (NC8) and N terminal fragment (NC3; immunogen) of human PLA2R. ICC/IF: PLA2R over-expressing podocytes. IHC-P: Normal human kidney and membranous nephropathy kidney tissues. Flow Cytometry: PLA2R over-expressing podocytes.
常规说明	<p>The Life Science industry has been in the grips of a reproducibility crisis for a number of years. Abcam is leading the way in addressing this with our range of recombinant monoclonal antibodies and knockout edited cell lines for gold-standard validation. Please check that this product meets your needs before purchasing.</p> <p>If you have any questions, special requirements or concerns, please send us an inquiry and/or contact our Support team ahead of purchase. Recommended alternatives for this product can be found below, along with publications, customer reviews and Q&As</p>

性能

形式	Liquid
存放说明	Shipped at 4°C. Store at +4°C short term (1-2 weeks). Upon delivery aliquot. Store at -20°C long term. Avoid freeze / thaw cycle.
解离常数 (K_D)	$K_D = 5.40 \times 10^{-10}$ M



[Learn more about K_D](#)

存储溶液	Preservative: 0.02% Sodium azide Constituent: 99.98% PBS
	Sterilization by membrane filtration.
纯度	Protein G purified
克隆	单克隆
克隆编号	12-6-5
骨髓瘤	Sp2
同种型	IgG2b

应用

The Abpromise guarantee **Abpromise™** 承诺保证使用 ab211490 于以下的经测试应用

“应用说明”部分 下显示的仅为推荐的起始稀释度;实际最佳的稀释度/浓度应由使用者检定。

应用	Ab 评论	说明
WB		1/5000 - 1/10000. Predicted molecular weight: 169 kDa.
Flow Cyt		1/200.
ICC/IF		1/400.
IHC-P		1/5000 - 1/20000. Perform heat mediated antigen retrieval at pH 8 before commencing with IHC staining protocol. See attached document for protocol details.

靶标

功能	Receptor for secretory phospholipase A2 (sPLA2). Acts as a receptor for phospholipase sPLA2-IB/PLA2G1B but not sPLA2-IIA/PLA2G2A. Also able to bind to snake PA2-like toxins. Although its precise function remains unclear, binding of sPLA2 to its receptor participates in both positive and negative regulation of sPLA2 functions as well as clearance of sPLA2. Binding of sPLA2-IB/PLA2G1B induces various effects depending on the cell type, such as activation of the mitogen-activated protein kinase (MAPK) cascade to induce cell proliferation, the production of lipid mediators, selective release of arachidonic acid in bone marrow-derived mast cells. In neutrophils, binding of sPLA2-IB/PLA2G1B can activate p38 MAPK to stimulate elastase release and cell adhesion. May be involved in responses in proinflammatory cytokine productions during endotoxic shock. Also has endocytic properties and rapidly internalizes sPLA2 ligands, which is particularly important for the clearance of extracellular sPLA2s to protect their potent enzymatic activities. The soluble secretory phospholipase A2 receptor form is circulating and acts as a negative regulator of sPLA2 functions by blocking the biological functions of sPLA2-IB/PLA2G1B.
组织特异性	Present in lung macrophage (at protein level). Highly expressed in kidney. Also expressed in pancreas, amnion, choriodecidua and placenta. Isoform 2 is expressed at much lower level.
序列相似性	Contains 8 C-type lectin domains.

Contains 1 fibronectin type-II domain.

Contains 1 ricin B-type lectin domain.

结构域

C-type lectin domains 3-5 mediate the interaction with phospholipase PLA2G1B.

The endocytosis signal probably mediates endocytosis via clathrin-coated pits.

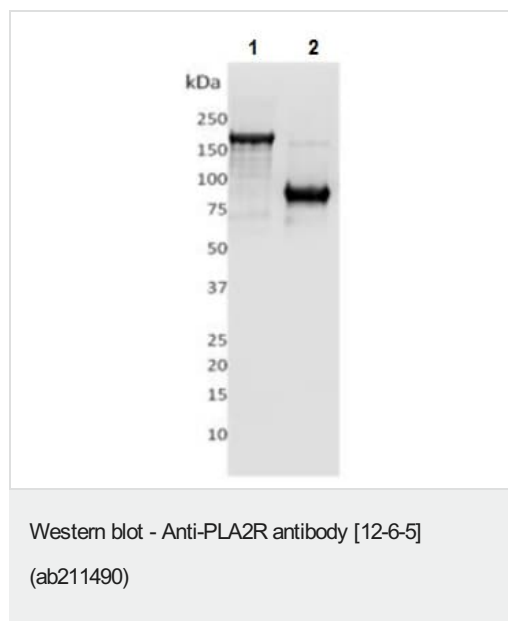
翻译后修饰

The secretory phospholipase A2 receptor form may be produced by the action of metalloproteinases. It contains all extracellular domains and only lacks transmembrane and cytosolic regions. It is however unclear whether this form is produced by proteolytic cleavage as suggested by some experiments, or by alternative splicing, as in the case of isoform 2 that shares all characteristics of secretory phospholipase A2 receptor form.

细胞定位

Secreted and Cell membrane.

图片



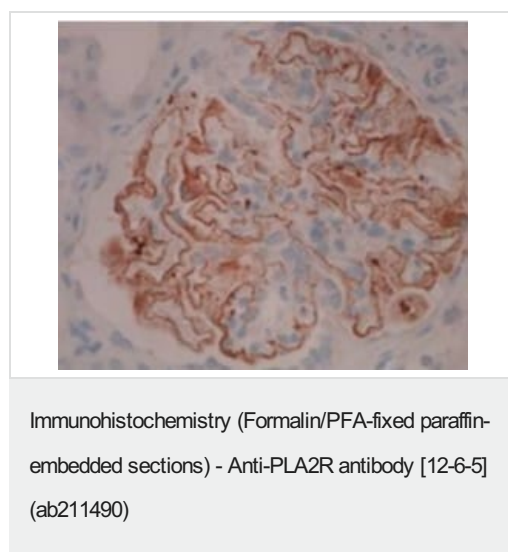
All lanes : Anti-PLA2R antibody [12-6-5] (ab211490) at 1/10000 dilution

Lane 1 : Recombinant extracellular domain of human PLA2R (NC8)

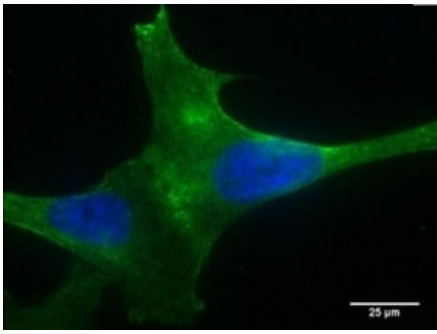
Lane 2 : Recombinant N-terminus fragment of human PLA2R (NC3)

Lysates/proteins at 10 µg per lane.

Predicted band size: 169 kDa

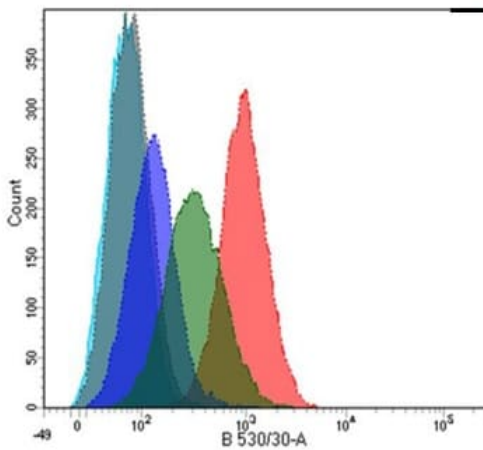


Immunohistochemical analysis of membranous nephropathy kidney tissue labeling PLA2R at 1/5000 dilution followed by DAB detection.



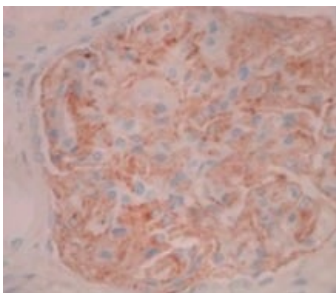
Immunofluorescent analysis of PLA2R over-expressing podocytes labeling PLA2R at 1/400 dilution (green).

Immunocytochemistry/ Immunofluorescence - Anti-PLA2R antibody [12-6-5] (ab211490)



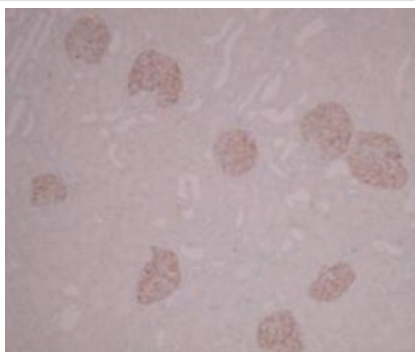
Flow cytometry analysis of wild type (dark blue line) and over-expressing PLA2R podocytes (low expressor, green line; high expressor, red line) labeling PLA2R using ab211490 at 1/200 dilution. Negative controls were unlabelled cells (turquoise line) and mouse IgG (grey line).

Flow Cytometry - Anti-PLA2R antibody [12-6-5] (ab211490)



Immunohistochemical analysis of normal human kidney tissue labeling PLA2R at 1/5000 dilution followed by DAB detection.

Immunohistochemistry (Formalin/PFA-fixed paraffin-embedded sections) - Anti-PLA2R antibody [12-6-5] (ab211490)



Immunohistochemical analysis of normal human kidney tissue labeling PLA2R at 1/5000 dilution followed by DAB detection.

Immunohistochemistry (Formalin/PFA-fixed paraffin-embedded sections) - Anti-PLA2R antibody [12-6-5] (ab211490)

Please note: All products are "FOR RESEARCH USE ONLY. NOT FOR USE IN DIAGNOSTIC PROCEDURES"

Our Abpromise to you: Quality guaranteed and expert technical support

- Replacement or refund for products not performing as stated on the datasheet
- Valid for 12 months from date of delivery
- Response to your inquiry within 24 hours
- We provide support in Chinese, English, French, German, Japanese and Spanish
- Extensive multi-media technical resources to help you
- We investigate all quality concerns to ensure our products perform to the highest standards

If the product does not perform as described on this datasheet, we will offer a refund or replacement. For full details of the Abpromise, please visit <https://www.abcam.cn/abpromise> or contact our technical team.

Terms and conditions

- Guarantee only valid for products bought direct from Abcam or one of our authorized distributors