


Anti-PKLR antibody ab96604

2 图像

概述	
产品名称	Anti-PKLR抗体
描述	兔多克隆抗体to PKLR
宿主	Rabbit
经测试应用	适用于: WB, ICC/IF
种属反应性	与反应: Human 预测可用于: Mouse, Rat, Cow 
免疫原	Recombinant fragment, corresponding to a region within the N terminal amino acids 1-230 of Human PKLR.
阳性对照	293T, A431, H1299, HeLa, HepG2, Raji cell lysates
常规说明	<p>The Life Science industry has been in the grips of a reproducibility crisis for a number of years. Abcam is leading the way in addressing this with our range of recombinant monoclonal antibodies and knockout edited cell lines for gold-standard validation. Please check that this product meets your needs before purchasing.</p> <p>If you have any questions, special requirements or concerns, please send us an inquiry and/or contact our Support team ahead of purchase. Recommended alternatives for this product can be found below, along with publications, customer reviews and Q&As</p>
性能	
形式	Liquid
存放说明	Shipped at 4°C. Upon delivery aliquot and store at -20°C or -80°C. Avoid repeated freeze / thaw cycles.
存储溶液	pH: 7.00 Preservative: 0.01% Thimerosal (merthiolate) Constituents: 1.21% Tris, 0.75% Glycine, 10% Glycerol (glycerin, glycerine)
纯度	Immunogen affinity purified
克隆	多克隆
同种型	IgG
应用	

The Abpromise guarantee

Abpromise™承诺保证使用ab96604于以下的经测试应用

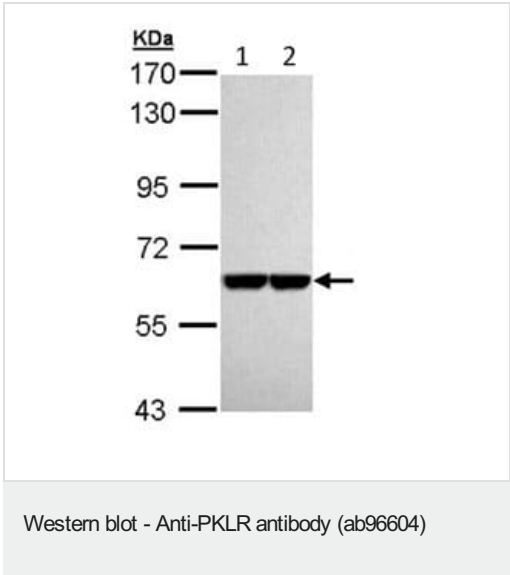
“应用说明”部分 下显示的仅为推荐的起始稀释度;实际最佳的稀释度/浓度应由使用者检定。

应用	Ab评论	说明
WB		1/500 - 1/3000. Predicted molecular weight: 62 kDa.
ICC/IF		1/100 - 1/200.

靶标

功能	Plays a key role in glycolysis.
通路	Carbohydrate degradation; glycolysis; pyruvate from D-glyceraldehyde 3-phosphate: step 5/5.
疾病相关	<p>Defects in PKLR are the cause of pyruvate kinase hyperactivity (PKHYP) [MIM:102900]; also known as high red cell ATP syndrome. This autosomal dominant phenotype is characterized by increase of red blood cell ATP.</p> <p>Defects in PKLR are the cause of pyruvate kinase deficiency of red cells (PKRD) [MIM:266200]. A frequent cause of hereditary non-spherocytic hemolytic anemia. Clinically, pyruvate kinase-deficient patients suffer from a highly variable degree of chronic hemolysis, ranging from severe neonatal jaundice and fatal anemia at birth, severe transfusion-dependent chronic hemolysis, moderate hemolysis with exacerbation during infection, to a fully compensated hemolysis without apparent anemia.</p>
序列相似性	Belongs to the pyruvate kinase family.

图片



All lanes : Anti-PKLR antibody (ab96604) at 1/5000 dilution

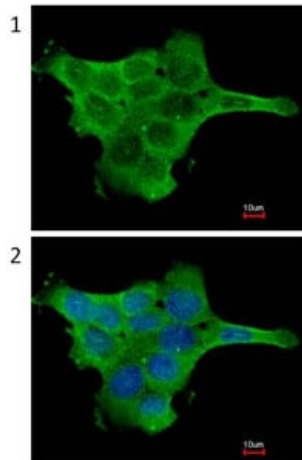
Lane 1 : H1299 whole cell lysate

Lane 2 : HeLa whole cell lysate

Lysates/proteins at 30 µg per lane.

Predicted band size: 62 kDa

7.5% SDS PAGE



Immunofluorescence analysis of paraformaldehyde-fixed A431, using ab96604 at 1:200 dilution. Image 2: Merged with DNA probe.

Immunocytochemistry/ Immunofluorescence - Anti-PKLR antibody (ab96604)

Please note: All products are "FOR RESEARCH USE ONLY. NOT FOR USE IN DIAGNOSTIC PROCEDURES"

Our Abpromise to you: Quality guaranteed and expert technical support

- Replacement or refund for products not performing as stated on the datasheet
- Valid for 12 months from date of delivery
- Response to your inquiry within 24 hours
- We provide support in Chinese, English, French, German, Japanese and Spanish
- Extensive multi-media technical resources to help you
- We investigate all quality concerns to ensure our products perform to the highest standards

If the product does not perform as described on this datasheet, we will offer a refund or replacement. For full details of the Abpromise, please visit <https://www.abcam.cn/abpromise> or contact our technical team.

Terms and conditions

- Guarantee only valid for products bought direct from Abcam or one of our authorized distributors