

Anti-PKLR antibody ab89071

[1 References](#) [3 图像](#)

概述

产品名称	Anti-PKLR抗体
描述	小鼠多克隆抗体to PKLR
宿主	Mouse
经测试应用	适用于: WB, IHC-P
种属反应性	与反应: Human
免疫原	Recombinant full length protein within Human PKLR. The exact immunogen sequence used to generate this antibody is proprietary information. If additional detail on the immunogen is needed to determine the suitability of the antibody for your needs, please contact our Scientific Support team to discuss your requirements.
阳性对照	Human liver tissue lysate, PKLR transfected 293T cell lysate, Human kidney tissue.
常规说明	<p>The Life Science industry has been in the grips of a reproducibility crisis for a number of years. Abcam is leading the way in addressing this with our range of recombinant monoclonal antibodies and knockout edited cell lines for gold-standard validation. Please check that this product meets your needs before purchasing.</p> <p>If you have any questions, special requirements or concerns, please send us an inquiry and/or contact our Support team ahead of purchase. Recommended alternatives for this product can be found below, along with publications, customer reviews and Q&As</p>

性能

形式	Liquid
存放说明	Shipped at 4°C. Upon delivery aliquot and store at -20°C or -80°C. Avoid repeated freeze / thaw cycles.
存储溶液	pH: 7.40 Constituent: 100% PBS
纯度	Protein A purified
克隆	多克隆
同种型	IgG

应用

The Abpromise guarantee

Abpromise™ 承诺保证使用ab89071于以下的经测试应用

“应用说明”部分 下显示的仅为推荐的起始稀释度;实际最佳的稀释度/浓度应由使用者检定。

应用	Ab评论	说明
WB		
IHC-P		

应用说明

IHC-P: Use at a concentration of 3 µg/ml. Antigen retrieval is recommended: Place sample in 1X citrate buffer (pH 6.0) and microwave at 750W for 20 minutes, cool sample
WB: Use at a concentration of 1 µg/ml. Predicted molecular weight: 62 kDa.

Not yet tested in other applications.

Optimal dilutions/concentrations should be determined by the end user.

靶标

功能

Plays a key role in glycolysis.

通路

Carbohydrate degradation; glycolysis; pyruvate from D-glyceraldehyde 3-phosphate: step 5/5.

疾病相关

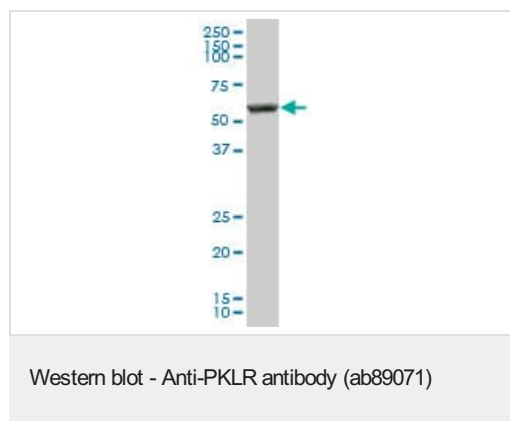
Defects in PKLR are the cause of pyruvate kinase hyperactivity (PKHYP) [MIM:102900]; also known as high red cell ATP syndrome. This autosomal dominant phenotype is characterized by increase of red blood cell ATP.

Defects in PKLR are the cause of pyruvate kinase deficiency of red cells (PKRD) [MIM:266200]. A frequent cause of hereditary non-spherocytic hemolytic anemia. Clinically, pyruvate kinase-deficient patients suffer from a highly variable degree of chronic hemolysis, ranging from severe neonatal jaundice and fatal anemia at birth, severe transfusion-dependent chronic hemolysis, moderate hemolysis with exacerbation during infection, to a fully compensated hemolysis without apparent anemia.

序列相似性

Belongs to the pyruvate kinase family.

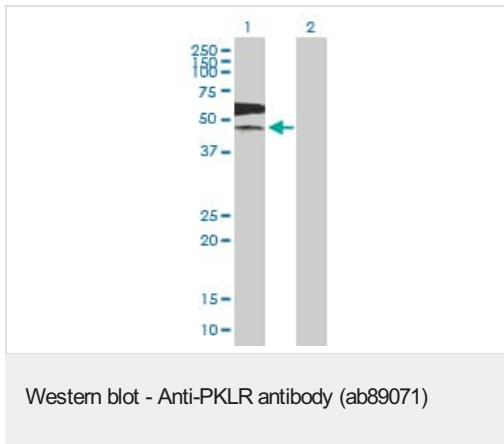
图片



Anti-PKLR antibody (ab89071) at 1 µg/ml + Human liver tissue lysate at 50 µg

Predicted band size: 62 kDa

Observed band size: 62 kDa



All lanes : Anti-PKLR antibody (ab89071) at 1 µg/ml

Lane 1 : PKLR transfected 293T cell lysate

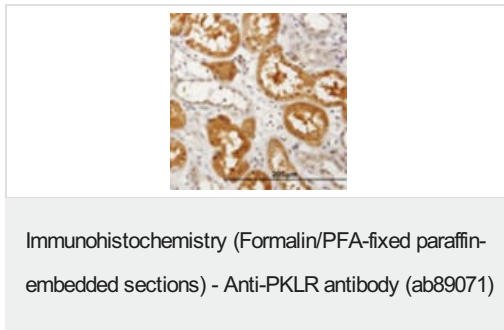
Lane 2 : Non-transfected lysate

Lysates/proteins at 25 µg per lane.

Predicted band size: 62 kDa

Observed band size: 48 kDa

Additional bands at: 60 kDa. We are unsure as to the identity of these extra bands.



ab89071 at 3µg/ml staining PKLR in Human kidney by

Immunohistochemistry, Formalin-fixed, Paraffin-embedded tissue.

Please note: All products are "FOR RESEARCH USE ONLY. NOT FOR USE IN DIAGNOSTIC PROCEDURES"

Our Abpromise to you: Quality guaranteed and expert technical support

- Replacement or refund for products not performing as stated on the datasheet
- Valid for 12 months from date of delivery
- Response to your inquiry within 24 hours
- We provide support in Chinese, English, French, German, Japanese and Spanish
- Extensive multi-media technical resources to help you
- We investigate all quality concerns to ensure our products perform to the highest standards

If the product does not perform as described on this datasheet, we will offer a refund or replacement. For full details of the Abpromise, please visit <https://www.abcam.cn/abpromise> or contact our technical team.

Terms and conditions

- Guarantee only valid for products bought direct from Abcam or one of our authorized distributors