

# Anti-PKLR antibody ab137787

[2 References](#) [3 图像](#)

### 概述

产品名称	Anti-PKLR抗体
描述	兔多克隆抗体to PKLR
宿主	Rabbit
经测试应用	适用于: WB
种属反应性	与反应: Mouse, Rat, Human
免疫原	Recombinant fragment, corresponding to a region within amino acids 254-574 of Human PKLR
阳性对照	Jurkat, Raji, K562, THP-1 and NCI-H929 cell extracts; Mouse and Rat liver extracts
常规说明	<p>The Life Science industry has been in the grips of a reproducibility crisis for a number of years. Abcam is leading the way in addressing this with our range of recombinant monoclonal antibodies and knockout edited cell lines for gold-standard validation. Please check that this product meets your needs before purchasing.</p> <p>If you have any questions, special requirements or concerns, please send us an inquiry and/or contact our Support team ahead of purchase. Recommended alternatives for this product can be found below, along with publications, customer reviews and Q&amp;As</p>

### 性能

形式	Liquid
存放说明	Shipped at 4°C. Upon delivery aliquot. Store at -20°C or -80°C. Avoid freeze / thaw cycle.
存储溶液	pH: 7.00 Preservative: 0.01% Thimerosal (merthiolate) Constituents: 1.21% Tris, 0.75% Glycine, 10% Glycerol (glycerin, glycerine)
纯度	Immunogen affinity purified
克隆	多克隆
同种型	IgG

### 应用

**The Abpromise guarantee** **Abpromise™**承诺保证使用ab137787于以下的经测试应用

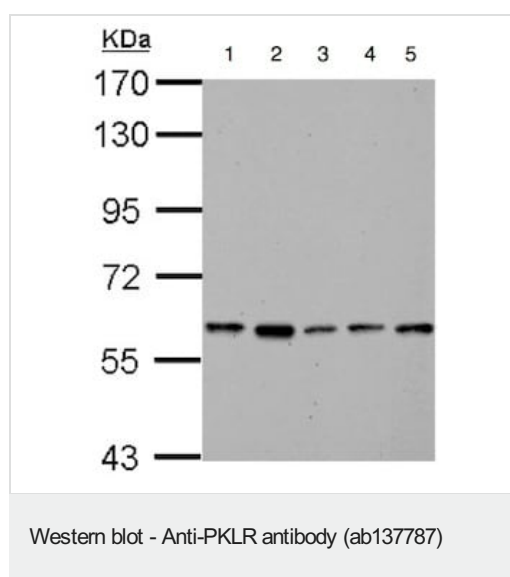
“应用说明”部分 下显示的仅为推荐的起始稀释度;实际最佳的稀释度/浓度应由使用者检定。

应用	Ab评论	说明
WB		1/500 - 1/3000. Predicted molecular weight: 62 kDa.

## 靶标

<b>功能</b>	Plays a key role in glycolysis.
<b>通路</b>	Carbohydrate degradation; glycolysis; pyruvate from D-glyceraldehyde 3-phosphate: step 5/5.
<b>疾病相关</b>	Defects in PKLR are the cause of pyruvate kinase hyperactivity (PKHYP) [MIM:102900]; also known as high red cell ATP syndrome. This autosomal dominant phenotype is characterized by increase of red blood cell ATP. Defects in PKLR are the cause of pyruvate kinase deficiency of red cells (PKRD) [MIM:266200]. A frequent cause of hereditary non-spherocytic hemolytic anemia. Clinically, pyruvate kinase-deficient patients suffer from a highly variable degree of chronic hemolysis, ranging from severe neonatal jaundice and fatal anemia at birth, severe transfusion-dependent chronic hemolysis, moderate hemolysis with exacerbation during infection, to a fully compensated hemolysis without apparent anemia.
<b>序列相似性</b>	Belongs to the pyruvate kinase family.

## 图片



**All lanes :** Anti-PKLR antibody (ab137787) at 1/1000 dilution

**Lane 1 :** Jurkat cell extract

**Lane 2 :** Raji cell extract

**Lane 3 :** K562 cell extract

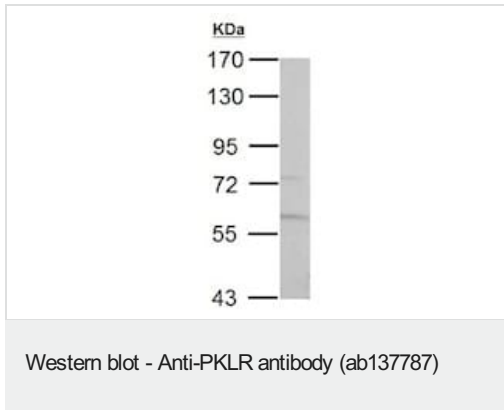
**Lane 4 :** THP-1 cell extract

**Lane 5 :** NCI-H929 cell extract

Lysates/proteins at 30 µg per lane.

**Predicted band size:** 62 kDa

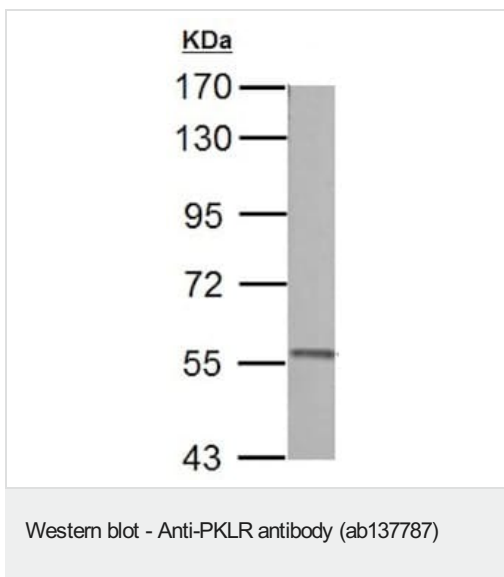
7.5% SDS PAGE



Anti-PKLR antibody (ab137787) at 1/500 dilution + Mouse liver extract at 50 µg

**Predicted band size:** 62 kDa

7.5% SDS PAGE



Anti-PKLR antibody (ab137787) at 1/500 dilution + Rat liver extract at 50 µg

**Predicted band size:** 62 kDa

7.5% SDS PAGE

**Please note:** All products are "FOR RESEARCH USE ONLY. NOT FOR USE IN DIAGNOSTIC PROCEDURES"

### Our Abpromise to you: Quality guaranteed and expert technical support

- Replacement or refund for products not performing as stated on the datasheet
- Valid for 12 months from date of delivery
- Response to your inquiry within 24 hours
- We provide support in Chinese, English, French, German, Japanese and Spanish
- Extensive multi-media technical resources to help you
- We investigate all quality concerns to ensure our products perform to the highest standards

If the product does not perform as described on this datasheet, we will offer a refund or replacement. For full details of the Abpromise, please visit <https://www.abcam.cn/abpromise> or contact our technical team.

### Terms and conditions

- Guarantee only valid for products bought direct from Abcam or one of our authorized distributors