

# Anti-PKC zeta (phospho T560) antibody [EP2037AY] ab62372

**重组 RabMAb**

**22 References** [7 图像](#)

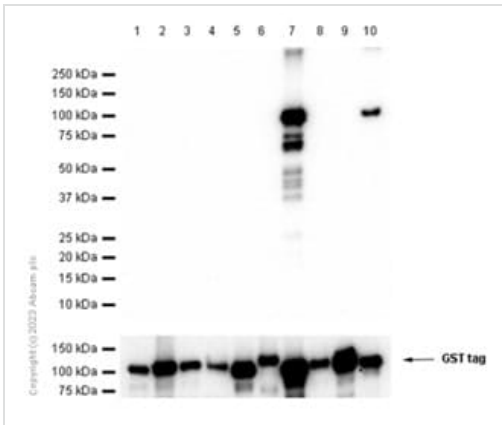
### 概述

产品名称	Anti-PKC zeta (phospho T560)抗体[EP2037AY]
描述	兔单克隆抗体[EP2037AY] to PKC zeta (phospho T560)
宿主	Rabbit
经测试应用	<b>适用于:</b> WB, IHC-P, Dot blot <b>不适用于:</b> Flow Cyt or ICC/IF
种属反应性	<b>与反应:</b> Mouse, Rat, Human
免疫原	Synthetic peptide within Human PKC zeta aa 550-650 (phospho T560). The exact sequence is proprietary.
阳性对照	WB: HeLa cell lysates. IHC-P: Human brain tissue and human breast ductal carcinoma tissue.
常规说明	This product is a recombinant monoclonal antibody, which offers several advantages including: <ul style="list-style-type: none"> <li>- High batch-to-batch consistency and reproducibility</li> <li>- Improved sensitivity and specificity</li> <li>- Long-term security of supply</li> <li>- Animal-free production</li> </ul> For more information <a href="#">see here</a> . Our RabMAb <sup>®</sup> technology is a patented hybridoma-based technology for making rabbit monoclonal antibodies. For details on our patents, please refer to <a href="#">RabMAb<sup>®</sup> patents</a> .

### 性能

形式	Liquid
存放说明	Shipped at 4°C. Store at -20°C. Stable for 12 months at -20°C.
存储溶液	pH: 7.20 Preservative: 0.01% Sodium azide Constituents: 49% PBS, 50% Glycerol (glycerin, glycerine), 0.05% BSA
纯度	Protein A purified
克隆	单克隆
克隆编号	EP2037AY
同种型	IgG





Western blot - Anti-PKC zeta (phospho T560) antibody [EP2037AY] (ab62372)

**All lanes** : Anti-PKC zeta (phospho T560) antibody [EP2037AY] (ab62372) at 1/1000 dilution

**Lane 1** : Recombinant human PKC alpha protein (Active) ([ab55672](#))

**Lane 2** : Recombinant human PKC beta 1 protein ([ab60840](#))

**Lane 3** : Recombinant human PKC beta 2 protein ([ab60841](#))

**Lane 4** : Recombinant human PKC gamma protein ([ab60842](#))

**Lane 5** : Recombinant human PKC delta protein ([ab60844](#))

**Lane 6** : Recombinant human PKC epsilon protein ([ab60847](#))

**Lane 7** : Recombinant human PKC zeta protein ([ab60848](#))

**Lane 8** : Recombinant human PKC eta protein ([ab60849](#))

**Lane 9** : Recombinant human PKC theta/PRKCQ protein ([ab56641](#))

**Lane 10** : Recombinant human PKC iota protein ([ab60850](#))

### Secondary

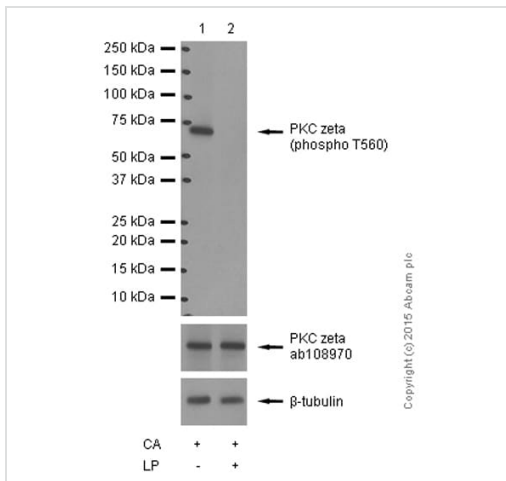
**All lanes** : Goat Anti-Rabbit IgG H&L (HRP) ([ab97051](#)) at 1/20000 dilution

**Predicted band size:** 68 kDa

**Observed band size:** 105 kDa

**Exposure time:** 5 seconds

Blocking and diluting buffer and concentration: 5% NFDN/TBST.



Western blot - Anti-PKC zeta (phospho T560) antibody [EP2037AY] (ab62372)

**All lanes :** Anti-PKC zeta (phospho T560) antibody [EP2037AY] (ab62372) at 1/20000 dilution

**Lane 1 :** HeLa cell lysate - treated with Calyculin A

**Lane 2 :** HeLa cell lysate - treated with Calyculin A and lambda phosphatase

Lysates/proteins at 10 µg per lane.

### Secondary

**All lanes :** Goat Anti-Rabbit IgG H&L (HRP) (**ab97051**) at 1/20000 dilution

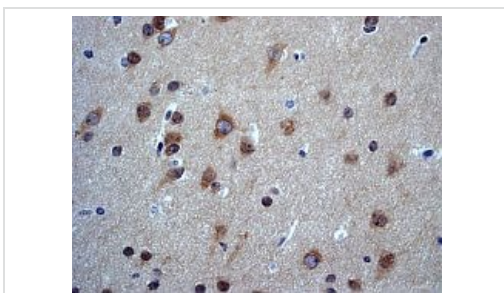
**Predicted band size:** 68 kDa

**Exposure time:** 3 minutes

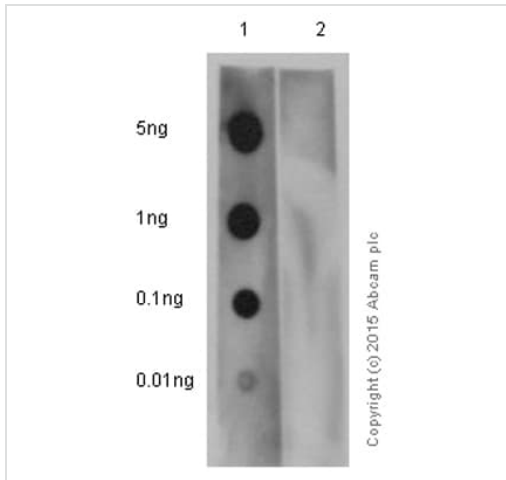
Blocking and dilution buffer: 5% NFDm/TBST.

ab62372 at 1/100 dilution staining PKC zeta in human brain by Immunohistochemistry, Paraffin-embedded tissue.

Perform heat mediated antigen retrieval with EDTA buffer pH 9 before commencing with IHC staining protocol.



Immunohistochemistry (Formalin/PFA-fixed paraffin-embedded sections) - Anti-PKC zeta (phospho T560) antibody [EP2037AY] (ab62372)

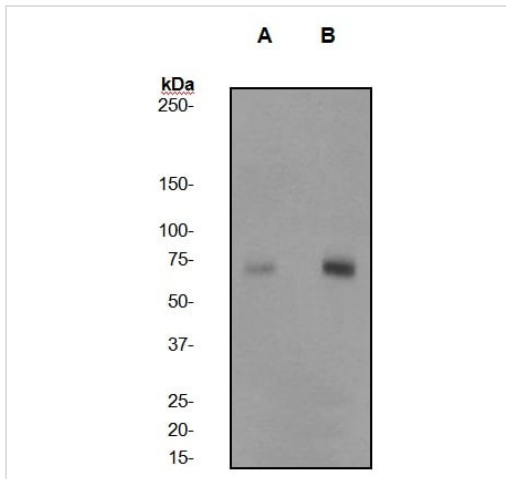


Dot Blot - Anti-PKC zeta (phospho T560) antibody [EP2037AY] (ab62372)

Dot blot analysis of PKC zeta (pT560) peptide (Lane 1) and PKC zeta non-phospho peptide (Lane 2) labelling PKC zeta (pT560) with ab62372 at a dilution of 1/1000. **ab97051** (Peroxidase conjugated goat anti-rabbit IgG (H+L)) was used as the secondary antibody at a dilution of 1/100000.

Blocking and dilution buffer: 5% NFDm/TBST.

Exposure time: 3 minutes.



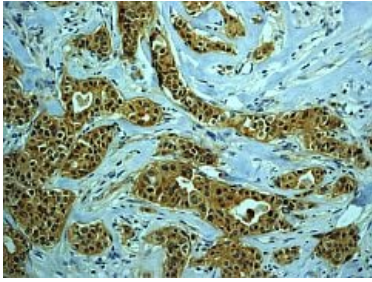
Western blot - Anti-PKC zeta (phospho T560) antibody [EP2037AY] (ab62372)

**All lanes :** Anti-PKC zeta (phospho T560) antibody [EP2037AY] (ab62372)

**Lane 1 :** HeLa Cell Lysate (untreated with Calyculin A)

**Lane 2 :** HeLa Cell Lysate (Treated with Calyculin A)

**Predicted band size:** 68 kDa

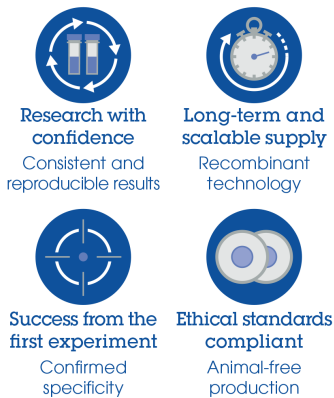


Immunohistochemistry (Formalin/PFA-fixed paraffin-embedded sections) - Anti-PKC zeta (phospho T560) antibody [EP2037AY] (ab62372)

ab62372 at 1/100 dilution staining PKC zeta in human breast ductal carcinoma by Immunohistochemistry, Paraffin-embedded tissue.

Perform heat mediated antigen retrieval with EDTA buffer pH 9 before commencing with IHC staining protocol.

### Why choose a recombinant antibody?



Anti-PKC zeta (phospho T560) antibody [EP2037AY] (ab62372)

**Please note:** All products are "FOR RESEARCH USE ONLY. NOT FOR USE IN DIAGNOSTIC PROCEDURES"

### Our Abpromise to you: Quality guaranteed and expert technical support

- Replacement or refund for products not performing as stated on the datasheet
- Valid for 12 months from date of delivery
- Response to your inquiry within 24 hours
- We provide support in Chinese, English, French, German, Japanese and Spanish
- Extensive multi-media technical resources to help you
- We investigate all quality concerns to ensure our products perform to the highest standards

If the product does not perform as described on this datasheet, we will offer a refund or replacement. For full details of the Abpromise, please visit <https://www.abcam.cn/abpromise> or contact our technical team.

### Terms and conditions

- Guarantee only valid for products bought direct from Abcam or one of our authorized distributors