

# Anti-PKC zeta (phospho T560) antibody ab59412

[12 References](#) [5 图像](#)

### 概述

产品名称	Anti-PKC zeta (phospho T560)抗体
描述	兔多克隆抗体to PKC zeta (phospho T560)
宿主	Rabbit
特异性	Detects endogenous levels of PKC? only when phosphorylated at threonine 560.
经测试应用	适用于: WB, ELISA, IHC-P
种属反应性	与反应: Human, African green monkey
免疫原	Synthetic peptide corresponding to Human PKC zeta aa 500-600 (phospho T560). Database link: <a href="#">Q05513</a>
阳性对照	WB: Extracts from COS7 cells treated with PMA (125ng/ml, 30mins). IHC-P: Human brain gliomas, human brain tissue.
常规说明	<p>The Life Science industry has been in the grips of a reproducibility crisis for a number of years. Abcam is leading the way in addressing this with our range of recombinant monoclonal antibodies and knockout edited cell lines for gold-standard validation. Please check that this product meets your needs before purchasing.</p> <p>If you have any questions, special requirements or concerns, please send us an inquiry and/or contact our Support team ahead of purchase. Recommended alternatives for this product can be found below, along with publications, customer reviews and Q&amp;As</p>

### 性能

形式	Liquid
存放说明	Shipped at 4°C. Store at +4°C short term (1-2 weeks). Upon delivery aliquot. Store at -20°C long term. Avoid freeze / thaw cycle.
存储溶液	pH: 7.40 Preservative: 0.02% Sodium azide Constituents: PBS, 50% Glycerol (glycerin, glycerine), 0.87% Sodium chloride
纯度	Immunogen affinity purified
纯化说明	Affinity-purified from rabbit antiserum by affinity chromatography using epitope-specific phosphopeptide. The antibody against non-phosphopeptide was removed by chromatography using non-phosphopeptide corresponding to the phosphorylation site.
克隆	多克隆

同种型

IgG

## 应用

**The Abpromise guarantee** **Abpromise™**承诺保证使用ab59412于以下的经测试应用

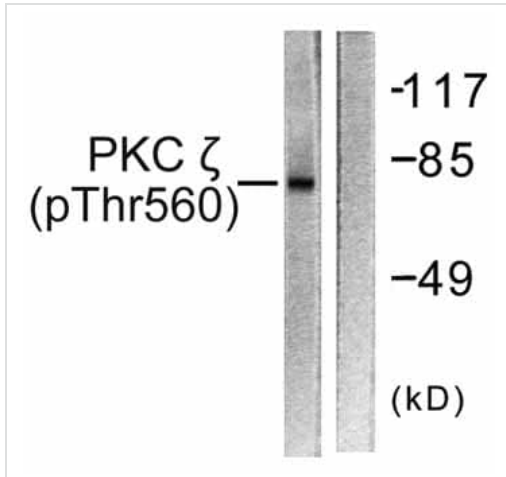
“应用说明”部分下显示的仅为推荐的起始稀释度;实际最佳的稀释度/浓度应由使用者检定。

应用	Ab评论	说明
WB		1/500 - 1/1000. Detects a band of approximately 68 kDa (predicted molecular weight: 68 kDa).
ELISA		1/20000.
IHC-P		1/50 - 1/100.

## 靶标

<b>功能</b>	<p>This is a calcium-independent, phospholipid-dependent, serine- and threonine-specific enzyme. Phosphorylates 'Ser-311' of RELA subunit of NF-kappa-B.</p> <p>PKC is activated by diacylglycerol which in turn phosphorylates a range of cellular proteins. PKC also serves as the receptor for phorbol esters, a class of tumor promoters. Subunit of a quaternary complex that plays a central role in epithelial cell polarization.</p>
<b>组织特异性</b>	<p>Expressed in brain, and to a lesser extent in lung, kidney and testis.</p>
<b>序列相似性</b>	<p>Belongs to the protein kinase superfamily. AGC Ser/Thr protein kinase family. PKC subfamily.</p> <p>Contains 1 AGC-kinase C-terminal domain.</p> <p>Contains 1 OPR domain.</p> <p>Contains 1 phorbol-ester/DAG-type zinc finger.</p> <p>Contains 1 protein kinase domain.</p>
<b>结构域</b>	<p>The OPR domain mediates mutually exclusive interactions with SQSTM1 and PARD6B.</p> <p>The C1 domain does not bind the diacylglycerol (DAG).</p>
<b>翻译后修饰</b>	<p>CDH5 is required for its phosphorylation at Thr-410.</p>
<b>细胞定位</b>	<p>Cytoplasm. Endosome. Cell junction. In the retina, localizes in the terminals of the rod bipolar cells (By similarity). Associates with endosomes. Presence of KRIT1, CDH5 and RAP1B is required for its localization to the cell junction.</p>

## 图片



Western blot - Anti-PKC zeta (phospho T560) antibody (ab59412)

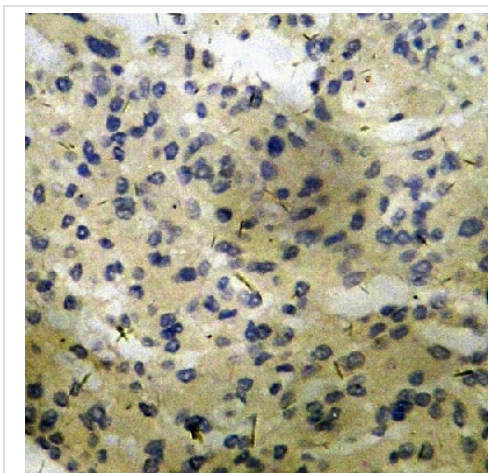
**All lanes :** Anti-PKC zeta (phospho T560) antibody (ab59412) at 1/500 dilution

**Lane 1 :** Extracts from COS7 cells treated with PMA (125ng/ml, 30mins)

**Lane 2 :** Extracts from COS7 cells treated with PMA (125ng/ml, 30mins) with phosphopeptide

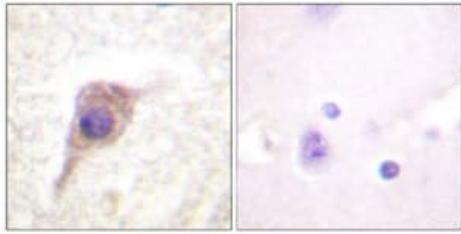
**Predicted band size:** 68 kDa

**Observed band size:** 68 kDa



Immunohistochemistry (Formalin/PFA-fixed paraffin-embedded sections) - Anti-PKC zeta (phospho T560) antibody (ab59412)

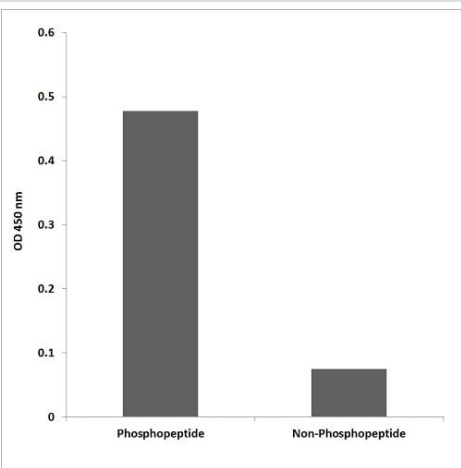
Immunohistochemical analysis of paraffin embedded human brain gliomas using ab59412 at 1/50 dilution



P-peptide - +

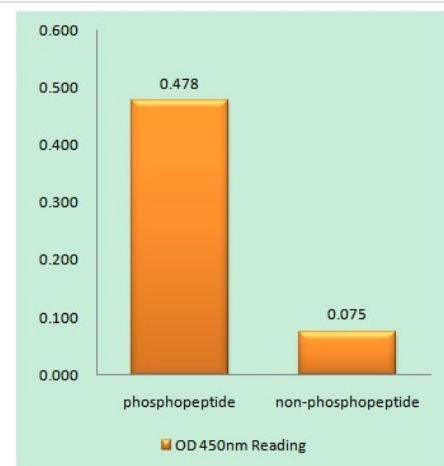
Immunohistochemistry (Formalin/PFA-fixed paraffin-embedded sections) - Anti-PKC zeta (phospho T560) antibody (ab59412)

Immunohistochemical analysis of paraffin embedded human brain tissue using ab59412 at 1/50 dilution, in the presence (right) and absence (left) of immunising phosphopeptide.



ELISA - Anti-PKC zeta (phospho T560) antibody (ab59412)

ELISA showing that ab59412 (1:20000) detects endogenous levels of PKC zeta only when phosphorylated at Thr560.



ELISA - Anti-PKC zeta (phospho T560) antibody (ab59412)

Enzyme-Linked Immunosorbent Assay (Phospho-ELISA) for Immunogen Phosphopeptide (Phospho-left) and Non-Phosphopeptide (Phospho-right), using PKC zeta (Phospho-Thr560) Antibody, ab59412.

**Please note:** All products are "FOR RESEARCH USE ONLY. NOT FOR USE IN DIAGNOSTIC PROCEDURES"

## **Our Abpromise to you: Quality guaranteed and expert technical support**

---

- Replacement or refund for products not performing as stated on the datasheet
- Valid for 12 months from date of delivery
- Response to your inquiry within 24 hours
  
- We provide support in Chinese, English, French, German, Japanese and Spanish
- Extensive multi-media technical resources to help you
- We investigate all quality concerns to ensure our products perform to the highest standards

If the product does not perform as described on this datasheet, we will offer a refund or replacement. For full details of the Abpromise, please visit <https://www.abcam.cn/abpromise> or contact our technical team.

## **Terms and conditions**

---

- Guarantee only valid for products bought direct from Abcam or one of our authorized distributors