

Anti-PKC zeta antibody [EP1490(2)] ab108970

敲除验证 RabMAb

[1 Abreviews](#) [1 References](#) [3 图像](#)

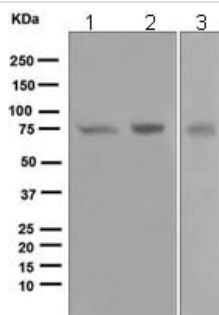
概述

产品名称	Anti-PKC zeta抗体[EP1490(2)]
描述	兔单克隆抗体[EP1490(2)] to PKC zeta
宿主	Rabbit
经测试应用	适用于: WB 不适用于: Flow Cyt, ICC/IF, IHC-P or IP
种属反应性	与反应: Mouse, Rat, Human
免疫原	Synthetic peptide. This information is proprietary to Abcam and/or its suppliers.
阳性对照	293T, HT-29 and fetal liver lysates
常规说明	Our RabMAb [®] technology is a patented hybridoma-based technology for making rabbit monoclonal antibodies. For details on our patents, please refer to RabMAb[®] patents . The Life Science industry has been in the grips of a reproducibility crisis for a number of years. Abcam is leading the way in addressing this with our range of recombinant monoclonal antibodies and knockout edited cell lines for gold-standard validation. Please check that this product meets your needs before purchasing. If you have any questions, special requirements or concerns, please send us an inquiry and/or contact our Support team ahead of purchase. Recommended alternatives for this product can be found below, along with publications, customer reviews and Q&As

性能

形式	Liquid
存放说明	Shipped at 4°C. Store at -20°C. Stable for 12 months at -20°C.
存储溶液	pH: 7.20 Preservative: 0.01% Sodium azide Constituents: 9% PBS, 40% Glycerol (glycerin, glycerine), 0.05% BSA, 50% Tissue culture supernatant
纯度	Protein A purified
克隆	单克隆
克隆编号	EP1490(2)

同种型	lgG	
应用		
<div>The Abpromise guarantee</div> <div>Abpromise™承诺保证使用ab108970于以下的经测试应用</div> <div>“应用说明”部分 下显示的仅为推荐的起始稀释度;实际最佳的稀释度/浓度应由使用者检定。</div>		
应用	Ab评论	说明
WB		1/1000 - 1/10000. Predicted molecular weight: 74 kDa.
应用说明		
Is unsuitable for Flow Cyt,ICC/IF,IHC-P or IP.		
靶标		
功能	<p>This is a calcium-independent, phospholipid-dependent, serine- and threonine-specific enzyme. Phosphorylates 'Ser-311' of RELA subunit of NF-kappa-B.</p> <p>PKC is activated by diacylglycerol which in turn phosphorylates a range of cellular proteins. PKC also serves as the receptor for phorbol esters, a class of tumor promoters. Subunit of a quaternary complex that plays a central role in epithelial cell polarization.</p>	
组织特异性	Expressed in brain, and to a lesser extent in lung, kidney and testis.	
序列相似性	<p>Belongs to the protein kinase superfamily. AGC Ser/Thr protein kinase family. PKC subfamily.</p> <p>Contains 1 AGC-kinase C-terminal domain.</p> <p>Contains 1 OPR domain.</p> <p>Contains 1 phorbol-ester/DAG-type zinc finger.</p> <p>Contains 1 protein kinase domain.</p>	
结构域	<p>The OPR domain mediates mutually exclusive interactions with SQSTM1 and PARD6B.</p> <p>The C1 domain does not bind the diacylglycerol (DAG).</p>	
翻译后修饰	CDH5 is required for its phosphorylation at Thr-410.	
细胞定位	<p>Cytoplasm. Endosome. Cell junction. In the retina, localizes in the terminals of the rod bipolar cells (By similarity). Associates with endosomes. Presence of KRIT1, CDH5 and RAP1B is required for its localization to the cell junction.</p>	
图片		



Western blot - Anti-PKC zeta antibody [EP1490(2)]
(ab108970)

All lanes : Anti-PKC zeta antibody [EP1490(2)] (ab108970) at
1/1000 dilution

Lane 1 : 293T lysate

Lane 2 : HT-29 lysate

Lane 3 : Fetal liver lysate

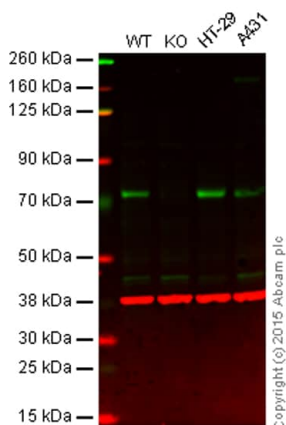
Lysates/proteins at 10 µg per lane.

Secondary

All lanes : HRP labelled goat anti-rabbit at 1/2000 dilution

Predicted band size: 74 kDa

Observed band size: 74 kDa



Western blot - Anti-PKC zeta antibody [EP1490(2)]
(ab108970)

Lane 1: Wild-type HAP1 cell lysate (20 µg)

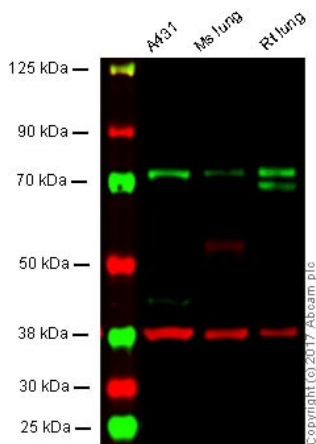
Lane 2: PKC zeta knockout HAP1 cell lysate (20 µg)

Lane 3: HT-29 cell lysate (20 µg)

Lane 4: A431 cell lysate (20 µg)

Lanes 1 - 4: Merged signal (red and green). Green - ab108970
observed at 74 kDa. Red - loading control, **ab8226**, observed at 42
kDa.

ab108970 was shown to specifically react with PKC zeta when
PKC zeta knockout samples were used. Wild-type and PKC
zeta knockout samples were subjected to SDS-PAGE. ab108970
and **ab8226** (loading control to beta actin) were both diluted 1/1000
and incubated overnight at 4°C. Blots were developed with Goat
anti-Rabbit IgG H&L (IRDye® 800CW) preadsorbed (**ab216773**)
and Goat anti-Mouse IgG H&L (IRDye® 680RD) preadsorbed
(**ab216776**) secondary antibodies at 1/10000 dilution for 1 h at
room temperature before imaging.



Western blot - Anti-PKC zeta antibody [EP1490(2)]
(ab108970)

All lanes : Anti-PKC zeta antibody [EP1490(2)] (ab108970) at 1/1000 dilution

Lane 1 : A431 whole cell lysate

Lane 2 : Mouse lung tissue lysate

Lane 3 : Rat lung tissue lysate

Lysates/proteins at 20 µg per lane.

Secondary

All lanes : Goat anti-Rabbit IgG H&L (IRDye® 800CW) preadsorbed ([ab216773](#)) at 1/10000 dilution

Performed under reducing conditions.

Predicted band size: 74 kDa

Observed band size: 74 kDa

Lanes 1 - 3: Merged signal (red and green). Green - ab108970 observed at 74 kDa. Red - loading control, [ab8245](#), observed at 37 kDa.

This blot was produced using a 4-12% Bis-tris gel under the MOPS buffer system. The gel was run at 200V for 50 minutes before being transferred onto a Nitrocellulose membrane at 30V for 70 minutes. The membrane was then blocked for an hour using Licor blocking buffer before being incubated with ab108970 and [ab8245](#) (loading control) overnight at 4°C. Antibody binding was detected using Goat anti-Rabbit IgG H&L (IRDye® 800CW) preabsorbed ([ab216773](#)) and Goat anti-Mouse IgG H&L (IRDye® 680RD) preabsorbed ([ab216776](#)) at a 1:10000 dilution for 1hr at room temperature and then imaged.

Please note: All products are "FOR RESEARCH USE ONLY. NOT FOR USE IN DIAGNOSTIC PROCEDURES"

Our Abpromise to you: Quality guaranteed and expert technical support

- Replacement or refund for products not performing as stated on the datasheet
- Valid for 12 months from date of delivery
- Response to your inquiry within 24 hours
- We provide support in Chinese, English, French, German, Japanese and Spanish

- Extensive multi-media technical resources to help you
- We investigate all quality concerns to ensure our products perform to the highest standards

If the product does not perform as described on this datasheet, we will offer a refund or replacement. For full details of the Abpromise, please visit <https://www.abcam.cn/abpromise> or contact our technical team.

Terms and conditions

- Guarantee only valid for products bought direct from Abcam or one of our authorized distributors