


Anti-PKC (phospho S660) antibody [EP1902Y] ab75837

RabMAb

★★★★☆ **1 Abreviews** **12 References** **5 图像**

概述

产品名称	Anti-PKC (phospho S660)抗体[EP1902Y]
描述	兔单克隆抗体[EP1902Y] to PKC (phospho S660)
宿主	Rabbit
特异性	ab75837 detects various isoforms of PKC phosphorylated.
经测试应用	适用于: Dot blot, IHC-P, WB 不适用于: Flow Cyt, ICC/IF or IP
种属反应性	与反应: Human 预测可用于: Mouse, Rat 
免疫原	Synthetic peptide. This information is proprietary to Abcam and/or its suppliers.
阳性对照	WB: HEK293 whole cell lysates, untreated or treated with Phorbol-12-myristate-13-acetate, Jurkat whole cell lysate (ab7899), untreated or treated with AP. IHC-P: human breast carcinoma.
常规说明	Our RabMAb [®] technology is a patented hybridoma-based technology for making rabbit monoclonal antibodies. For details on our patents, please refer to RabMAb[®] patents . The Life Science industry has been in the grips of a reproducibility crisis for a number of years. Abcam is leading the way in addressing this with our range of recombinant monoclonal antibodies and knockout edited cell lines for gold-standard validation. Please check that this product meets your needs before purchasing. If you have any questions, special requirements or concerns, please send us an inquiry and/or contact our Support team ahead of purchase. Recommended alternatives for this product can be found below, along with publications, customer reviews and Q&As

性能

形式	Liquid
存放说明	Shipped at 4°C. Upon delivery aliquot and store at -20°C. Avoid freeze / thaw cycles.
存储溶液	pH: 7.20 Preservative: 0.05% Sodium azide Constituents: 0.1% BSA, 40% Glycerol (glycerin, glycerine), 9.85% Tris glycine, 50% Tissue culture supernatant

failure and death, by increasing protein synthesis, protein-DNA ratio and cell surface area. Regulates cardiomyocyte function by phosphorylating cardiac troponin T (TNNT2/CTNT), which induces significant reduction in actomyosin ATPase activity, myofibril calcium sensitivity and myocardial contractility. In angiogenesis, is required for full endothelial cell migration, adhesion to vitronectin (VTN), and vascular endothelial growth factor A (VEGFA)-dependent regulation of kinase activation and vascular tube formation. Involved in the stabilization of VEGFA mRNA at post-transcriptional level and mediates VEGFA-induced cell proliferation. In the regulation of calcium-induced platelet aggregation, mediates signals from the CD36/GP4 receptor for granule release, and activates the integrin heterodimer ITGA2B-ITGB3 through the RAP1GAP pathway for adhesion. During response to lipopolysaccharides (LPS), may regulate selective LPS-induced macrophage functions involved in host defense and inflammation. But in some inflammatory responses, may negatively regulate NF-kappa-B-induced genes, through IL1A-dependent induction of NF-kappa-B inhibitor alpha (NFKBIA/IKBA). Upon stimulation with 12-O-tetradecanoylphorbol-13-acetate (TPA), phosphorylates EIF4G1, which modulates EIF4G1 binding to MKNK1 and may be involved in the regulation of EIF4E phosphorylation. Phosphorylates KIT, leading to inhibition of KIT activity. Phosphorylates ATF2 which promotes cooperation between ATF2 and JUN, activating transcription.

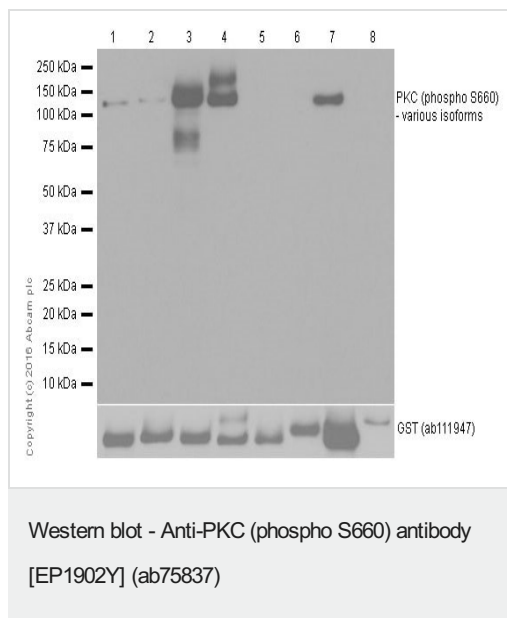
序列相似性

Belongs to the protein kinase superfamily. AGC Ser/Thr protein kinase family. PKC subfamily. Contains 1 AGC-kinase C-terminal domain. Contains 1 C2 domain. Contains 2 phorbol-ester/DAG-type zinc fingers. Contains 1 protein kinase domain.

细胞定位

Cytoplasm. Cell membrane. Mitochondrion membrane. Nucleus.

图片



All lanes : Anti-PKC (phospho S660) antibody [EP1902Y] (ab75837) at 1/20000 dilution

Lane 1 : Recombinant human PKC alpha protein (Active) ([ab55672](#))

Lane 2 : Recombinant human PKC beta 1 protein ([ab60840](#))

Lane 3 : Recombinant human PKC beta 2 protein ([ab60841](#))

Lane 4 : Recombinant human PKC delta protein ([ab60844](#))

Lane 5 : Recombinant human PKC eta protein ([ab60849](#))

Lane 6 : Recombinant human PKC epsilon protein ([ab60847](#))

Lane 7 : Recombinant human PKC theta/PRKCQ protein ([ab56641](#))

Lane 8 : Recombinant human PKC mu/PKD protein ([ab60873](#))

Secondary

All lanes : Goat Anti-Rabbit IgG H&L (HRP) ([ab97051](#)) at 1/20000 dilution

Predicted band size: 77 kDa

Observed band size: 100-150 kDa

Exposure time: 1 second

Blocking and dilution buffer: 5% NFDM/TBST.

Active human PKC alpha full length protein ([ab55672](#)) contains aa1-672 with GST-tag.

Active human PKC beta 1 full length protein ([ab60840](#)) contains aa1-671 with GST-tag.

Active human PKC beta 2 full length protein ([ab60841](#)) contains aa1-673 with GST-tag.

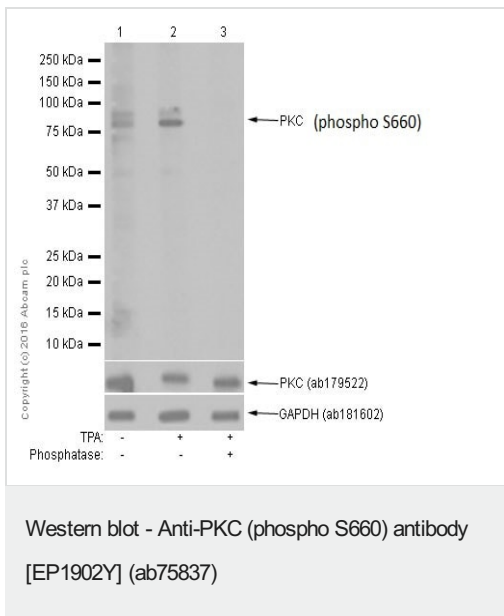
Active human PKC delta full length protein ([ab60844](#)) contains aa1-676 with GST-tag.

Active human PKC eta full length protein ([ab60849](#)) contains aa1-683 with GST-tag.

Active human PKC epsilon full length protein ([ab60847](#)) contains aa1-737 with GST-tag.

Active human PKC theta full length protein ([ab56641](#)) contains aa1-706 with GST-tag.

Active human PKC mu full length protein ([ab60873](#)) contains aa1-912 with GST-tag.



All lanes : Anti-PKC (phospho S660) antibody [EP1902Y] (ab75837) at 1/5000 dilution

Lane 1 : HEK293 (Human epithelial cell line from embryonic kidney) whole cell lysates

Lane 2 : HEK293 (Human epithelial cell line from embryonic kidney) treated with Phorbol-12-myristate-13-acetate at 100nM for 1 hour whole cell lysates

Lane 3 : HEK293 (Human epithelial cell line from embryonic kidney) treated with Phorbol-12-myristate-13-acetate at 100nM for 1 hour whole cell lysates. Then the membrane was incubated with phosphatase.

Lysates/proteins at 15 µg per lane.

Secondary

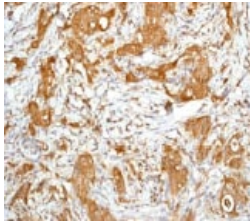
All lanes : Goat Anti-Rabbit IgG H&L (HRP) ([ab97051](#)) at 1/20000 dilution

Predicted band size: 77 kDa

Observed band size: 77 kDa

Exposure time: 3 minutes

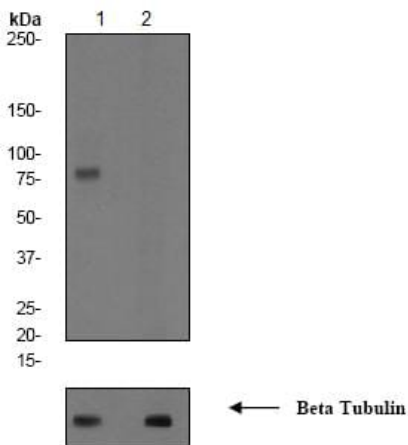
Blocking and dilution buffer: 5% NFDM/TBST.



Immunohistochemistry (Formalin/PFA-fixed paraffin-embedded sections) - Anti-PKC (phospho S660) antibody [EP1902Y] (ab75837)

ab75837, at a 1/100 dilution, staining PKC in paraffin embedded human breast carcinoma tissue by Immunohistochemistry.

Perform heat mediated antigen retrieval before commencing with IHC staining protocol.



Western blot - Anti-PKC (phospho S660) antibody [EP1902Y] (ab75837)

All lanes : Anti-PKC (phospho S660) antibody [EP1902Y] (ab75837) at 1/100000 dilution

Lane 1 : Jurkat cell lysates, untreated

Lane 2 : Jurkat cell lysates, treated with AP

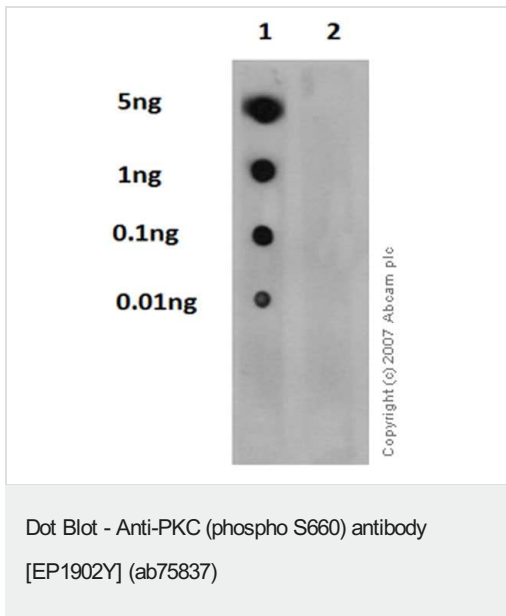
Lysates/proteins at 10 µg per lane.

Secondary

All lanes : goat anti-rabbit HRP at 1/2000 dilution

Predicted band size: 77 kDa

Observed band size: 77 kDa



Dot blot analysis of PKC beta 2 (phospho S660) phospho peptide (Lane 1), PKC beta 2 Non-phospho peptide (Lane 2), labelling PKC (phospho S660) with ab75837 at a dilution of 1/1000. Peroxidase conjugated goat anti-rabbit IgG (H+L) was used as the secondary antibody at a dilution of 1/2500. Blocking and diluting buffer: 5% NFDm/TBST. Exposure time: 3 minutes.

Please note: All products are "FOR RESEARCH USE ONLY. NOT FOR USE IN DIAGNOSTIC PROCEDURES"

Our Abpromise to you: Quality guaranteed and expert technical support

- Replacement or refund for products not performing as stated on the datasheet
- Valid for 12 months from date of delivery
- Response to your inquiry within 24 hours
- We provide support in Chinese, English, French, German, Japanese and Spanish
- Extensive multi-media technical resources to help you
- We investigate all quality concerns to ensure our products perform to the highest standards

If the product does not perform as described on this datasheet, we will offer a refund or replacement. For full details of the Abpromise, please visit <https://www.abcam.cn/abpromise> or contact our technical team.

Terms and conditions

- Guarantee only valid for products bought direct from Abcam or one of our authorized distributors