

Anti-PKC mu/PKD (phospho S916) antibody [EP1494Y] ab81218

RabMAb

2 References 3 图像

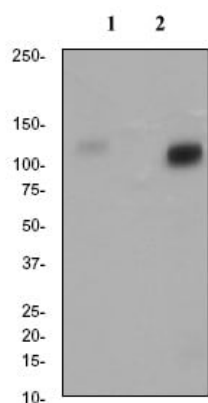
概述

产品名称	Anti-PKC mu/PKD (phospho S916)抗体[EP1494Y]
描述	兔单克隆抗体[EP1494Y] to PKC mu/PKD (phospho S916)
宿主	Rabbit
经测试应用	适用于: WB, IHC-P, IP 不适用于: Flow Cyt or ICC/IF
种属反应性	与反应: Human
免疫原	Synthetic peptide. This information is proprietary to Abcam and/or its suppliers.
阳性对照	WB: lysate from HeLa cells treated with TPA. IHC: Human placenta tissue.
常规说明	Our RabMAb [®] technology is a patented hybridoma-based technology for making rabbit monoclonal antibodies. For details on our patents, please refer to RabMAb[®] patents . The Life Science industry has been in the grips of a reproducibility crisis for a number of years. Abcam is leading the way in addressing this with our range of recombinant monoclonal antibodies and knockout edited cell lines for gold-standard validation. Please check that this product meets your needs before purchasing. If you have any questions, special requirements or concerns, please send us an inquiry and/or contact our Support team ahead of purchase. Recommended alternatives for this product can be found below, along with publications, customer reviews and Q&As Mouse, Rat: We have preliminary internal testing data to indicate this antibody may not react with these species. Please contact us for more information.

性能

形式	Liquid
存放说明	Shipped at 4°C. Upon delivery aliquot and store at -20°C. Avoid repeated freeze / thaw cycles.
存储溶液	pH: 7.20 Preservative: 0.05% Sodium azide Constituents: 0.1% BSA, 40% Glycerol (glycerin, glycerine), 9.85% Tris glycine, 50% Tissue culture supernatant
纯度	Tissue culture supernatant

anti-rabbit HRP secondary antibody (**ab97051**) at 1/10000 dilution and visualised using ECL development solution.



Western blot - Anti-PKC mu/PKD (phospho S916) antibody [EP1494Y] (ab81218)

All lanes : Anti-PKC mu/PKD (phospho S916) antibody [EP1494Y] (ab81218) at 1/100000 dilution

Lane 1 : lysate from untreated HeLa cells

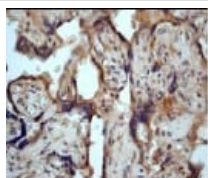
Lane 2 : lysate from HeLa cells treated with TPA

Lysates/proteins at 10 µg per lane.

Secondary

All lanes : HRP labelled Goat anti-Rabbit at 1/2000 dilution

Predicted band size: 102 kDa



Immunohistochemistry (Formalin/PFA-fixed paraffin-embedded sections) - Anti-PKC mu/PKD (phospho S916) antibody [EP1494Y] (ab81218)

Immunohistochemistry analysis of paraffin-embedded Human placenta tissue using 1/100 ab81218.

Perform heat mediated antigen retrieval with EDTA buffer pH 9 before commencing with IHC staining protocol.

Please note: All products are "FOR RESEARCH USE ONLY. NOT FOR USE IN DIAGNOSTIC PROCEDURES"

Our Abpromise to you: Quality guaranteed and expert technical support

- Replacement or refund for products not performing as stated on the datasheet
- Valid for 12 months from date of delivery
- Response to your inquiry within 24 hours
- We provide support in Chinese, English, French, German, Japanese and Spanish
- Extensive multi-media technical resources to help you
- We investigate all quality concerns to ensure our products perform to the highest standards

If the product does not perform as described on this datasheet, we will offer a refund or replacement. For full details of the Abpromise, please visit <https://www.abcam.cn/abpromise> or contact our technical team.

Terms and conditions

- Guarantee only valid for products bought direct from Abcam or one of our authorized distributors