

### Anti-PKC epsilon antibody ab63638

★★★★★ [2 Abreviews](#) [8 References](#) [2 图像](#)

#### 概述

产品名称	Anti-PKC epsilon抗体
描述	兔多克隆抗体to PKC epsilon
宿主	Rabbit
经测试应用	适用于: ELISA, ICC/IF, IHC-P, IHC-Fr, WB
种属反应性	与反应: Mouse, Rat, Human
免疫原	Synthetic non phosphopeptide derived from human PKC epsilon around the phosphorylation site of serine 729 (G-F-S <sup>P</sup> -Y-F).
常规说明	<p>The Life Science industry has been in the grips of a reproducibility crisis for a number of years. Abcam is leading the way in addressing this with our range of recombinant monoclonal antibodies and knockout edited cell lines for gold-standard validation. Please check that this product meets your needs before purchasing.</p> <p>If you have any questions, special requirements or concerns, please send us an inquiry and/or contact our Support team ahead of purchase. Recommended alternatives for this product can be found below, along with publications, customer reviews and Q&amp;As</p>

#### 性能

形式	Liquid
存放说明	Shipped at 4°C. Store at -20°C. Stable for 12 months at -20°C.
存储溶液	<p>pH: 7</p> <p>Preservative: 0.02% Sodium azide</p> <p>Constituents: PBS, 50% Glycerol (glycerin, glycerine), 0.87% Sodium chloride</p> <p>Without Mg<sup>2+</sup> and Ca<sup>2+</sup></p>
纯度	Immunogen affinity purified
纯化说明	ab63638 was affinity purified from rabbit antiserum by affinity chromatography using epitope specific immunogen.
克隆	多克隆
同种型	IgG

## 应用

**The Abpromise guarantee**      **Abpromise™**承诺保证使用ab63638于以下的经测试应用

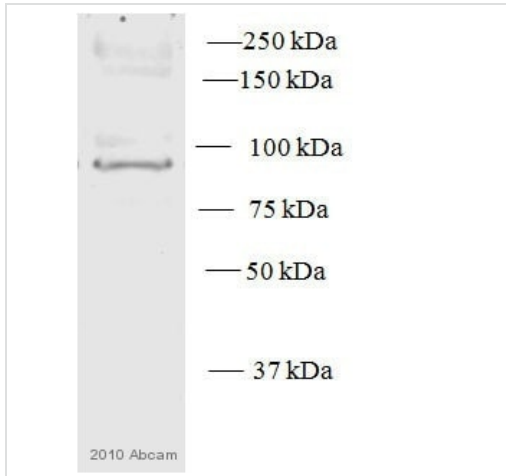
“应用说明”部分 下显示的仅为推荐的起始稀释度;实际最佳的稀释度/浓度应由使用者检定。

应用	Ab评论	说明
ELISA		Use at an assay dependent concentration.
ICC/IF		Use at an assay dependent concentration.
IHC-P		Use at an assay dependent concentration.
IHC-Fr		Use at an assay dependent concentration. PubMed: 25165884
WB	★★★★★ (2)	1/500 - 1/1000. Detects a band of approximately 84 kDa (predicted molecular weight: 84 kDa).

## 靶标

功能	This is calcium-independent, phospholipid-dependent, serine- and threonine-specific enzyme. PKC is activated by diacylglycerol which in turn phosphorylates a range of cellular proteins. PKC also serves as the receptor for phorbol esters, a class of tumor promoters.
序列相似性	Belongs to the protein kinase superfamily. AGC Ser/Thr protein kinase family. PKC subfamily. Contains 1 AGC-kinase C-terminal domain. Contains 1 C2 domain. Contains 2 phorbol-ester/DAG-type zinc fingers. Contains 1 protein kinase domain.
结构域	The C1 domain, containing the phorbol ester/DAG-type region 1 (C1A) and 2 (C1B), is the diacylglycerol sensor and the C2 domain is a non-calcium binding domain.
翻译后修饰	Phosphorylation on Thr-566 by PDPK1 triggers autophosphorylation on Ser-729.

## 图片



Western blot - Anti-PKC epsilon antibody (ab63638)

This image is courtesy of an anonymous abreview.

Anti-PKC epsilon antibody (ab63638) at 1/500 dilution + Human  
Cell Lysate- Whole cell (HMEC) at 20 µg

#### Secondary

Donkey anti rabbit

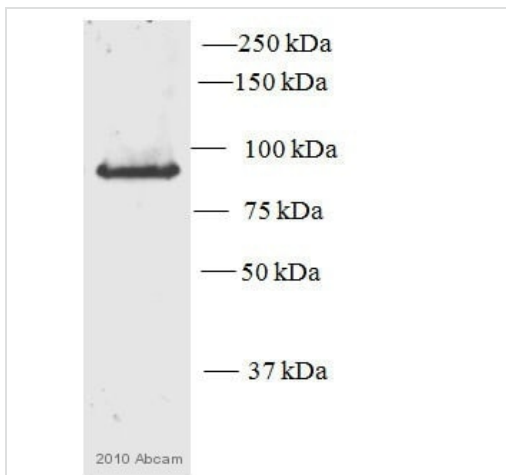
Conjugation: HRP at 1/5000 dilution

Developed using the ECL technique.

Performed under reducing conditions.

**Predicted band size:** 84 kDa

**Exposure time:** 10 minutes



Western blot - Anti-PKC epsilon antibody (ab63638)

This image is courtesy of an anonymous abreview.

Anti-PKC epsilon antibody (ab63638) at 1/500 dilution + Mouse  
Cell lysate - whole cell (NIH3T3)  
at 20 µg

#### Secondary

Donkey anti rabbit HRP linked

Conjugation: HRP at 1/5000 dilution

Developed using the ECL technique.

Performed under reducing conditions.

**Predicted band size:** 84 kDa

**Exposure time:** 10 minutes

**Please note:** All products are "FOR RESEARCH USE ONLY. NOT FOR USE IN DIAGNOSTIC PROCEDURES"

#### Our Abpromise to you: Quality guaranteed and expert technical support

- Replacement or refund for products not performing as stated on the datasheet
- Valid for 12 months from date of delivery
- Response to your inquiry within 24 hours
- We provide support in Chinese, English, French, German, Japanese and Spanish
- Extensive multi-media technical resources to help you
- We investigate all quality concerns to ensure our products perform to the highest standards

If the product does not perform as described on this datasheet, we will offer a refund or replacement. For full details of the Abpromise, please visit <https://www.abcam.cn/abpromise> or contact our technical team.

#### **Terms and conditions**

---

- Guarantee only valid for products bought direct from Abcam or one of our authorized distributors