


# Anti-PKC delta (phospho Y311) antibody [EPR2609Y] ab76181

重组 RabMAb

★★★★☆ [2 Abreviews](#) [7 References](#) [6 图像](#)

### 概述

产品名称	Anti-PKC delta (phospho Y311)抗体[EPR2609Y]
描述	兔单克隆抗体[EPR2609Y] to PKC delta (phospho Y311)
宿主	Rabbit
经测试应用	<b>适用于:</b> Dot blot, WB, IP, IHC-P <b>不适用于:</b> Flow Cyt or ICC/IF
种属反应性	<b>与反应:</b> Human <b>预测可用于:</b> Mouse 
免疫原	Synthetic peptide. This information is proprietary to Abcam and/or its suppliers.
阳性对照	WB: HeLa cell lysate treated with Phorbol-12-myristate-13-acetate and U937 cell lysate treated with TPA. IHC-P: Human urinary bladder carcinoma tissue. IP: HeLa treated with 10mM H2O2 for 1 hour whole cell lysate.
常规说明	<p>This product is a recombinant monoclonal antibody, which offers several advantages including:</p> <ul style="list-style-type: none"><li>- High batch-to-batch consistency and reproducibility</li><li>- Improved sensitivity and specificity</li><li>- Long-term security of supply</li><li>- Animal-free production</li></ul> <p>For more information <a href="#">see here</a>.</p> <p>Our RabMAb<sup>®</sup> technology is a patented hybridoma-based technology for making rabbit monoclonal antibodies. For details on our patents, please refer to <a href="#">RabMAb<sup>®</sup> patents</a>.</p> <p>Rat: We have preliminary internal testing data to indicate this antibody may not react with this species. Please contact us for more information.</p>

### 性能

形式	Liquid
存放说明	Shipped at 4°C. Upon delivery aliquot and store at -20°C. Avoid freeze / thaw cycles.
存储溶液	pH: 7.20 Preservative: 0.01% Sodium azide Constituents: 9% PBS, 40% Glycerol (glycerin, glycerine), 0.05% BSA, 50% Tissue culture supernatant

纯度	Protein A purified
克隆	单克隆
克隆编号	EPR2609Y
同种型	IgG

## 应用

**The Abpromise guarantee**      **Abpromise™**承诺保证使用ab76181于以下的经测试应用

“应用说明”部分下显示的仅为推荐的起始稀释度;实际最佳的稀释度/浓度应由使用者检定。

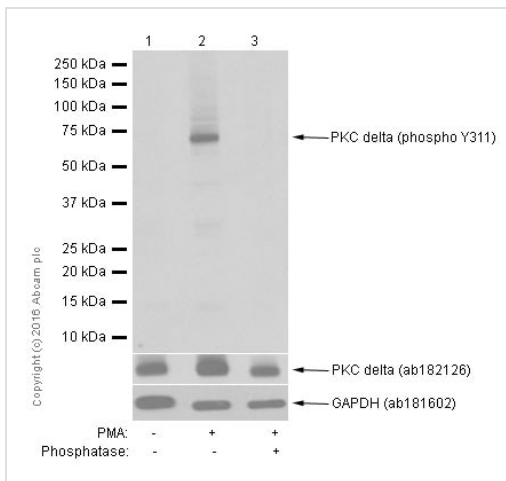
应用	Ab评论	说明
Dot blot		1/1000.
WB	★★★★☆ (2)	1/2500 - 1/5000. Predicted molecular weight: 77 kDa.
IP		1/40.
IHC-P		1/100. Perform heat mediated antigen retrieval before commencing with IHC staining protocol.

**应用说明**      Is unsuitable for Flow Cyt or ICC/IF.

## 靶标

<b>功能</b>	This is calcium-independent, phospholipid-dependent, serine- and threonine-specific enzyme. PKC is activated by diacylglycerol which in turn phosphorylates a range of cellular proteins. PKC also serves as the receptor for phorbol esters, a class of tumor promoters. May play a role in antigen-dependent control of B-cell function. Phosphorylates MUC1 in the C-terminal and regulates the interaction between MUC1 and beta-catenin.
<b>序列相似性</b>	Belongs to the protein kinase superfamily. AGC Ser/Thr protein kinase family. PKC subfamily. Contains 1 AGC-kinase C-terminal domain. Contains 1 C2 domain. Contains 2 phorbol-ester/DAG-type zinc fingers. Contains 1 protein kinase domain.
<b>结构域</b>	The C1 domain, containing the phorbol ester/DAG-type region 1 (C1A) and 2 (C1B), is the diacylglycerol sensor. The C2 domain is a non-calcium binding domain. It binds proteins containing phosphotyrosine in a sequence-specific manner.
<b>翻译后修饰</b>	Phosphorylated on Thr-507, within the activation loop. Autophosphorylated and/or phosphorylated. Although the Thr-507 phosphorylation occurs it is not a prerequisite for enzymatic activity.
<b>细胞定位</b>	Cytoplasm. Membrane.

## 图片



Western blot - Anti-PKC delta (phospho Y311) antibody [EPR2609Y] (ab76181)

**All lanes :** Anti-PKC delta (phospho Y311) antibody [EPR2609Y] (ab76181) at 1/500 dilution

**Lane 1 :** HeLa (Human cervix adenocarcinoma epithelial cell) whole cell lysates

**Lane 2 :** HeLa (Human cervix adenocarcinoma epithelial cell) treated with Phorbol-12-myristate-13-acetate at 200nM for 20 minutes. Whole cell lysates

**Lane 3 :** HeLa (Human cervix adenocarcinoma epithelial cell) treated with Phorbol-12-myristate-13-acetate at 200nM for 20 minutes. Whole cell lysates. Then the membrane was incubated with phosphatase.

Lysates/proteins at 15 µg per lane.

### Secondary

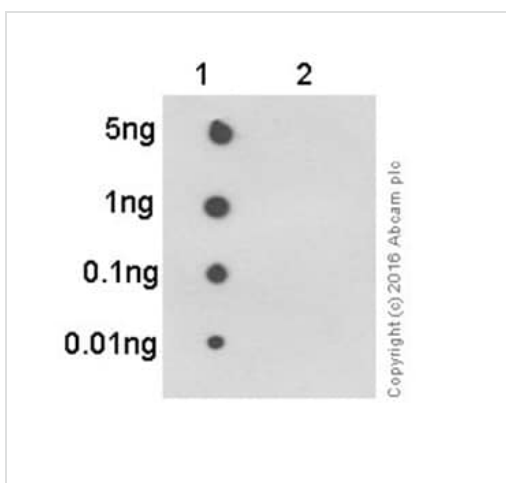
**All lanes :** Goat Anti-Rabbit IgG H&L (HRP) (**ab97051**) at 1/20000 dilution

**Predicted band size:** 77 kDa

**Observed band size:** 78 kDa

**Exposure time:** 3 minutes

Blocking and diluting buffer and concentration: 5% NFDm/TBST.

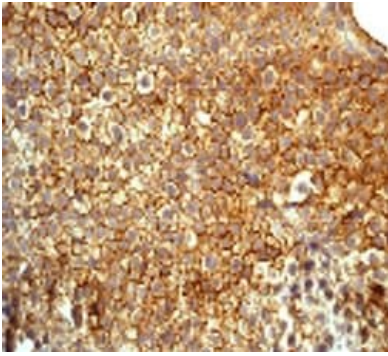


Dot Blot - Anti-PKC delta (phospho Y311) antibody [EPR2609Y] (ab76181)

Dot blot analysis of PKC delta (pY311) phospho peptide (Lane 1) and PKC delta non-phospho peptide (Lane 2) using ab76181 at 1/1000 dilution followed by Goat Anti-Rabbit IgG, (H+L), Peroxidase conjugated (**ab97051**) at 1/100000 dilution.

Blocking and Diluting buffer and concentration: 5% NFDm /TBST.

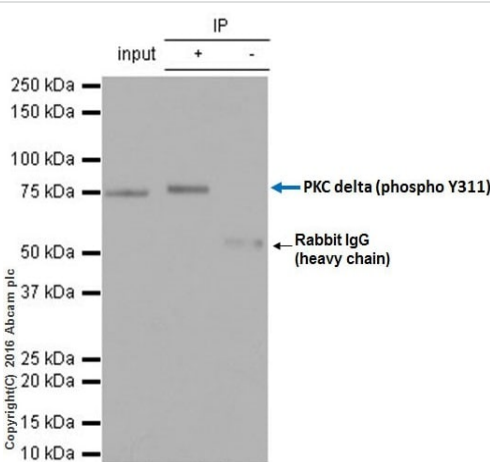
Exposure time: 3 minutes.



Immunohistochemistry (Formalin/PFA-fixed paraffin-embedded sections) - Anti-PKC delta (phospho Y311) antibody [EPR2609Y] (ab76181)

Immunohistochemical analysis of paraffin-embedded human urinary bladder carcinoma with ab76181 at 1/100 dilution.

Perform heat mediated antigen retrieval before commencing with IHC staining protocol.



Immunoprecipitation - Anti-PKC delta (phospho Y311) antibody [EPR2609Y] (ab76181)

ab76181 at 1/20 immunoprecipitating PKC delta (phospho Y311) in HeLa treated with 10mM H<sub>2</sub>O<sub>2</sub> for 1 hour whole cell lysate.

Lane 1 (input): HeLa treated with 10mM H<sub>2</sub>O<sub>2</sub> for 1 hour whole cell lysate (10µg)

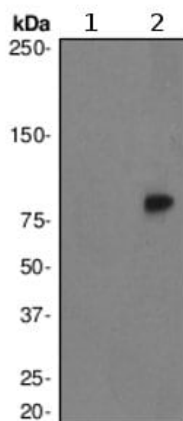
Lane 2 (+): ab76181 + HeLa treated with 10mM H<sub>2</sub>O<sub>2</sub> for 1 hour whole cell lysate.

Lane 3 (-): Rabbit monoclonal IgG ([ab172730](#)) instead of ab76181 in HeLa treated with 10mM H<sub>2</sub>O<sub>2</sub> for 1 hour whole cell lysate.

For western blotting, ab76181 was used as a dilution of 1/200 followed by [ab131366](#) VeriBlot for IP (HRP) at a dilution of 1/1000.

Blocking buffer and concentration: 5% NFDm/TBST.

Diluting buffer and concentration: 5% NFDm /TBST.



Western blot - Anti-PKC delta (phospho Y311) antibody [EPR2609Y] (ab76181)

**All lanes** : Anti-PKC delta (phospho Y311) antibody [EPR2609Y] (ab76181) at 1/5000 dilution

**Lane 1** : U937 cell lysate

**Lane 2** : U937 cell lysate treated with TPA

Lysates/proteins at 10 µg per lane.

### Secondary

**All lanes** : Goat anti-rabbit-HRP at 1/2000 dilution

**Predicted band size:** 77 kDa

**Observed band size:** 78 kDa

### Why choose a recombinant antibody?



**Research with confidence**  
Consistent and reproducible results



**Long-term and scalable supply**  
Recombinant technology



**Success from the first experiment**  
Confirmed specificity



**Ethical standards compliant**  
Animal-free production

Anti-PKC delta (phospho Y311) antibody  
[EPR2609Y] (ab76181)

**Please note:** All products are "FOR RESEARCH USE ONLY. NOT FOR USE IN DIAGNOSTIC PROCEDURES"

### Our Abpromise to you: Quality guaranteed and expert technical support

---

- Replacement or refund for products not performing as stated on the datasheet
- Valid for 12 months from date of delivery
- Response to your inquiry within 24 hours
- We provide support in Chinese, English, French, German, Japanese and Spanish
- Extensive multi-media technical resources to help you
- We investigate all quality concerns to ensure our products perform to the highest standards

If the product does not perform as described on this datasheet, we will offer a refund or replacement. For full details of the Abpromise, please visit <https://www.abcam.cn/abpromise> or contact our technical team.

### Terms and conditions

---

- Guarantee only valid for products bought direct from Abcam or one of our authorized distributors