

Anti-PKC alpha (phospho T497) antibody [EP2608Y] ab76016

重组 RabMAb

1 Abreviews 17 References 7 图像

概述

产品名称	Anti-PKC alpha (phospho T497)抗体[EP2608Y]
描述	兔单克隆抗体[EP2608Y] to PKC alpha (phospho T497)
宿主	Rabbit
经测试应用	适用于: Dot blot, WB, IHC-P 不适用于: Flow Cyt or ICC/IF
种属反应性	与反应: Mouse, Rat, Human
免疫原	Synthetic peptide. This information is proprietary to Abcam and/or its suppliers.
阳性对照	WB: HeLa, NIH/3T3, and C6 whole cell lysates. IHC-P: Human glioma, Mouse kidney, and Rat kidney tissues.
常规说明	<p>This product has switched from a hybridoma to recombinant production method on 2nd August 2023.</p> <p>This product is a recombinant monoclonal antibody, which offers several advantages including:</p> <ul style="list-style-type: none">- High batch-to-batch consistency and reproducibility- Improved sensitivity and specificity- Long-term security of supply- Animal-free production <p>For more information see here.</p> <p>Our RabMAb[®] technology is a patented hybridoma-based technology for making rabbit monoclonal antibodies. For details on our patents, please refer to RabMAb[®] patents.</p>

性能

形式	Liquid
存放说明	Shipped at 4°C. Store at -20°C. Stable for 12 months at -20°C.
存储溶液	pH: 7.20 Preservative: 0.01% Sodium azide Constituents: 0.05% BSA, 40% Glycerol (glycerin, glycerine), 59% PBS
纯度	Protein A purified
克隆	单克隆

克隆编号 EP2608Y

同种型 IgG

应用

The Abpromise guarantee **Abpromise™** 承诺保证使用ab76016于以下的经测试应用

“应用说明”部分 下显示的仅为推荐的起始稀释度;实际最佳的稀释度/浓度应由使用者检定。

应用	Ab评论	说明
Dot blot		1/1000.
WB		1/100000. Predicted molecular weight: 77 kDa.
IHC-P		1/10000. Perform heat mediated antigen retrieval with Tris/EDTA buffer pH 9.0 before commencing with IHC staining protocol.

应用说明 Is unsuitable for Flow Cyt or ICC/IF.

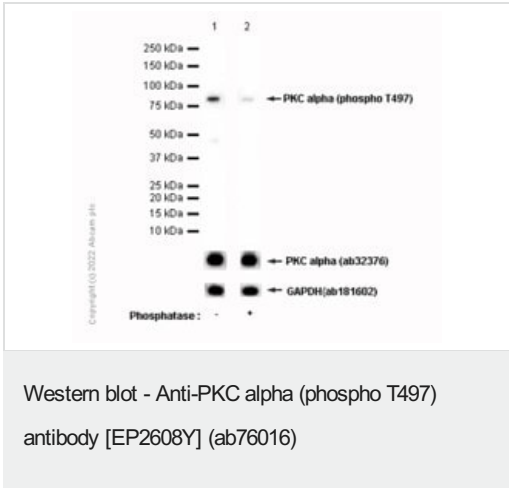
靶标

功能 This is a calcium-activated, phospholipid-dependent, serine- and threonine-specific enzyme. May play a role in cell motility by phosphorylating CSPG4.
PKC is activated by diacylglycerol which in turn phosphorylates a range of cellular proteins. PKC also serves as the receptor for phorbol esters, a class of tumor promoters.

序列相似性 Belongs to the protein kinase superfamily. AGC Ser/Thr protein kinase family. PKC subfamily.
Contains 1 AGC-kinase C-terminal domain.
Contains 1 C2 domain.
Contains 2 phorbol-ester/DAG-type zinc fingers.
Contains 1 protein kinase domain.

细胞定位 Cytoplasm. Cell membrane. Nucleus.

图片



All lanes : Anti-PKC alpha (phospho T497) antibody [EP2608Y] (ab76016) at 1/10000 dilution

Lane 1 : HeLa (Human cervix adenocarcinoma epithelial cell) whole cell lysate

Lane 2 : HeLa (Human cervix adenocarcinoma epithelial cell) whole cell lysate, then the membrane was incubated with Alkaline phosphatase

Lysates/proteins at 15 µg per lane.

Secondary

All lanes : Goat Anti-Rabbit IgG H&L (HRP) ([ab97051](#)) at 1/20000 dilution

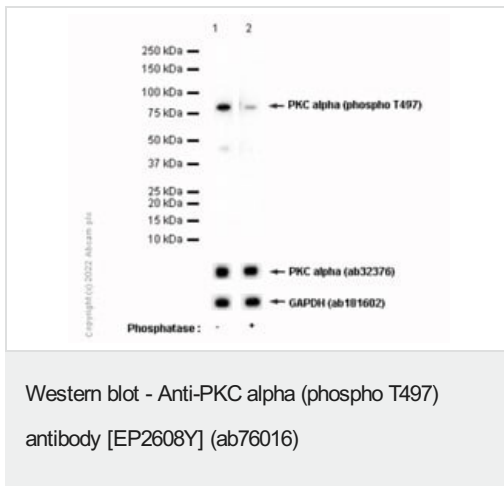
Performed under reducing conditions.

Predicted band size: 77 kDa

Observed band size: 77 kDa

Exposure time: 10 seconds

Blocking and diluting buffer and concentration: 5% NFDM/TBST.



All lanes : Anti-PKC alpha (phospho T497) antibody [EP2608Y] (ab76016) at 1/10000 dilution

Lane 1 : NIH/3T3 (Mouse embryonic fibroblast) whole cell lysate

Lane 2 : NIH/3T3 (Mouse embryonic fibroblast) whole cell lysate, then the membrane was incubated with Alkaline phosphatase

Lysates/proteins at 15 µg per lane.

Secondary

All lanes : Goat Anti-Rabbit IgG H&L (HRP) ([ab97051](#)) at 1/20000 dilution

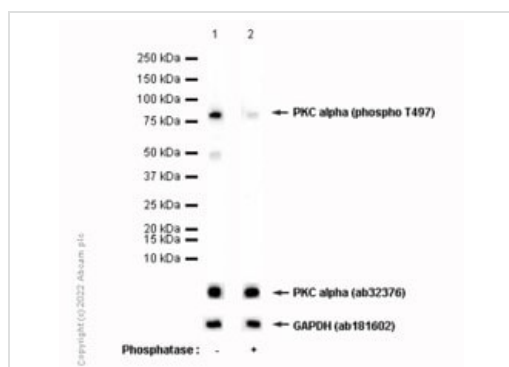
Performed under reducing conditions.

Predicted band size: 77 kDa

Observed band size: 77 kDa

Exposure time: 10 seconds

Blocking and diluting buffer and concentration: 5% NFDM/TBST.



Western blot - Anti-PKC alpha (phospho T497) antibody [EP2608Y] (ab76016)

All lanes : Anti-PKC alpha (phospho T497) antibody [EP2608Y] (ab76016) at 1/10000 dilution

Lane 1 : C6 (Rat glial tumor glial cell) whole cell lysate

Lane 2 : C6 (Rat glial tumor glial cell) whole cell lysate, then the membrane was incubated with Alkaline phosphatase

Lysates/proteins at 15 µg per lane.

Secondary

All lanes : Goat Anti-Rabbit IgG H&L (HRP) (**ab97051**) at 1/20000 dilution

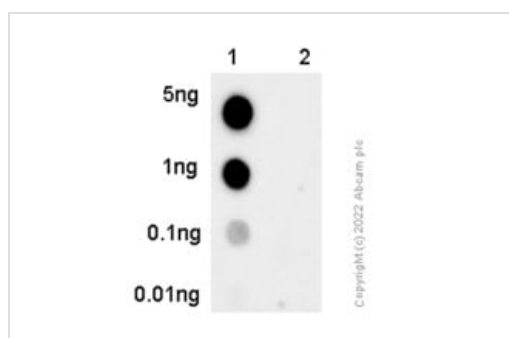
Performed under reducing conditions.

Predicted band size: 77 kDa

Observed band size: 77 kDa

Exposure time: 5 seconds

Blocking and diluting buffer and concentration: 5% NFDM/TBST.



Dot Blot - Anti-PKC alpha (phospho T497) antibody [EP2608Y] (ab76016)

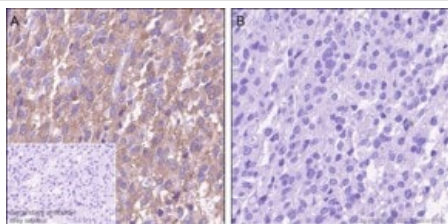
Dot blot analysis of PKC alpha (pT497) using ab76016 at 1:1000 (1.34 µg/ml) followed by a Goat Anti-Rabbit IgG, (H+L), Peroxidase conjugated (**ab97051**) at 1:20000 dilution.

Lane 1: PKC alpha non-phospho peptide.

Lane 2: PKC alpha (phospho T497).

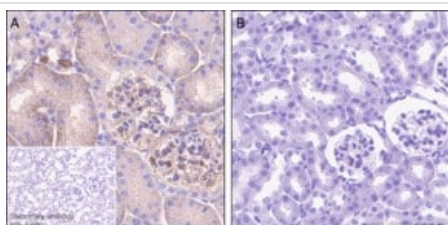
Blocking and dilution buffer: 5% NFDM/TBST.

Exposure time: 10 seconds.



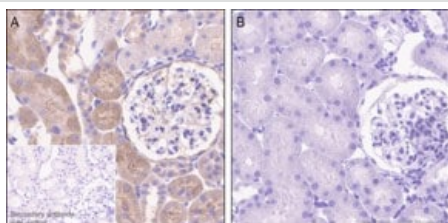
Immunohistochemistry (Formalin/PFA-fixed paraffin-embedded sections) - Anti-PKC alpha (phospho T497) antibody [EP2608Y] (ab76016)

Immunohistochemical analysis of paraffin-embedded Human glioma tissue labeling PKC alpha with ab76016 at 1/10000 (0.134 µg/ml), with or without Lambda phosphatase treatment, then followed by Rabbit specific IHC polymer detection kit HRP/DAB ([ab209101](#)). Positive staining on human glioma. No signal was detected when tissue was treated with Lambda phosphatase. The immunostaining was performed on a Leica Biosystems BOND® RX instrument. Counterstained with Hematoxylin. Heat mediated antigen retrieval was performed with Tris-EDTA buffer (pH 9.0, epitope retrieval solution2) for 30 mins.



Immunohistochemistry (Formalin/PFA-fixed paraffin-embedded sections) - Anti-PKC alpha (phospho T497) antibody [EP2608Y] (ab76016)

Immunohistochemical analysis of paraffin-embedded Mouse kidney tissue labeling PKC alpha with ab76016 at 1/10000 (0.134 µg/ml), with or without Lambda phosphatase treatment, then followed by Rabbit specific IHC polymer detection kit HRP/DAB ([ab209101](#)). Positive staining on Mouse kidney. No signal was detected when tissue was treated with Lambda phosphatase. The immunostaining was performed on a Leica Biosystems BOND® RX instrument. Counterstained with Hematoxylin. Heat mediated antigen retrieval was performed with Tris-EDTA buffer (pH 9.0, epitope retrieval solution2) for 30 mins.



Immunohistochemistry (Formalin/PFA-fixed paraffin-embedded sections) - Anti-PKC alpha (phospho T497) antibody [EP2608Y] (ab76016)

Immunohistochemical analysis of paraffin-embedded Rat kidney tissue labeling PKC alpha with ab76016 at 1/10000 (0.134 µg/ml), with or without Lambda phosphatase treatment, then followed by Rabbit specific IHC polymer detection kit HRP/DAB ([ab209101](#)). Positive staining on Rat kidney. No signal was detected when tissue was treated with Lambda phosphatase. The immunostaining was performed on a Leica Biosystems BOND® RX instrument. Counterstained with Hematoxylin. Heat mediated antigen retrieval was performed with Tris-EDTA buffer (pH 9.0, epitope retrieval solution2) for 30 mins.

Please note: All products are "FOR RESEARCH USE ONLY. NOT FOR USE IN DIAGNOSTIC PROCEDURES"

Our Abpromise to you: Quality guaranteed and expert technical support

- Replacement or refund for products not performing as stated on the datasheet
- Valid for 12 months from date of delivery
- Response to your inquiry within 24 hours

- We provide support in Chinese, English, French, German, Japanese and Spanish
- Extensive multi-media technical resources to help you
- We investigate all quality concerns to ensure our products perform to the highest standards

If the product does not perform as described on this datasheet, we will offer a refund or replacement. For full details of the Abpromise, please visit <https://www.abcam.cn/abpromise> or contact our technical team.

Terms and conditions

- Guarantee only valid for products bought direct from Abcam or one of our authorized distributors