


Anti-PKA alpha + beta (catalytic subunits) (phospho T197) antibody ab59218

[2 References](#) [2 图像](#)

概述

产品名称	Anti-PKA alpha + beta (catalytic subunits) (phospho T197)抗体
描述	兔多克隆抗体to PKA alpha + beta (catalytic subunits) (phospho T197)
宿主	Rabbit
特异性	ab59218 detects endogenous levels of PKA alpha + beta (catalytic subunit) only when phosphorylated at threonine 197.
经测试应用	适用于: IHC-P, WB
种属反应性	与反应: Mouse, Human 预测可用于: Rat 
免疫原	Synthetic peptide corresponding to Human PKA alpha + beta (catalytic subunits) aa 150-250 (phospho T197). (T-W-TP-L-C). Database link: P17612
常规说明	<p>The Life Science industry has been in the grips of a reproducibility crisis for a number of years. Abcam is leading the way in addressing this with our range of recombinant monoclonal antibodies and knockout edited cell lines for gold-standard validation. Please check that this product meets your needs before purchasing.</p> <p>If you have any questions, special requirements or concerns, please send us an inquiry and/or contact our Support team ahead of purchase. Recommended alternatives for this product can be found below, along with publications, customer reviews and Q&As</p>

性能

形式	Liquid
存放说明	Shipped at 4°C. Store at -20°C. Stable for 12 months at -20°C.
存储溶液	pH: 7.40 Preservative: 0.02% Sodium azide Constituents: PBS, 50% Glycerol (glycerin, glycerine), 0.87% Sodium chloride
	Without Mg+2 and Ca+2
纯度	Immunogen affinity purified

纯化说明	ab59218 was affinity-purified from rabbit antiserum by affinity-chromatography using epitope-specific phosphopeptide. The antibody against non-phosphopeptide was removed by chromatography using non-phosphopeptide corresponding to the phosphorylation site.
克隆	多克隆
同种型	IgG

应用

The Abpromise guarantee **Abpromise™**承诺保证使用ab59218于以下的经测试应用

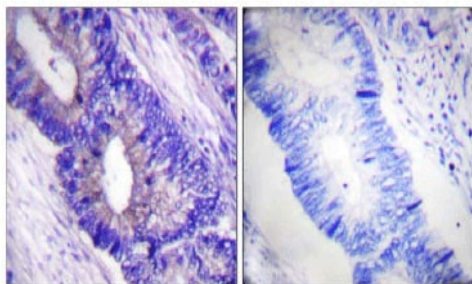
“应用说明”部分 下显示的仅为推荐的起始稀释度;实际最佳的稀释度/浓度应由使用者检定。

应用	Ab评论	说明
IHC-P		1/50 - 1/100.
WB		1/500 - 1/1000. Detects a band of approximately 41 kDa (predicted molecular weight: 41 kDa).

靶标

相关性	PRKACA and PRKACB are members of the Ser/Thr protein kinase family and are a catalytic subunit of cAMP-dependent protein kinase. cAMP is a signaling molecule important for a variety of cellular functions. cAMP exerts its effects by activating the cAMP-dependent protein kinase, which transduces the signal through phosphorylation of different target proteins. The inactive kinase holoenzyme is a tetramer composed of two regulatory and two catalytic subunits. cAMP causes the dissociation of the inactive holoenzyme into a dimer of regulatory subunits bound to four cAMP and two free monomeric catalytic subunits.
细胞定位	Cytoplasm. Nucleus. Note=Translocates into the nucleus (monomeric catalytic subunit). The inactive holoenzyme is found in the cytoplasm

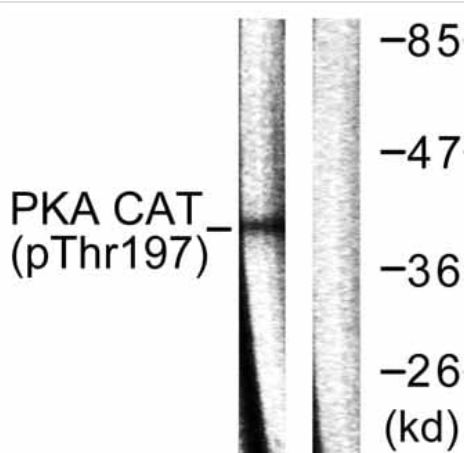
图片



P-peptide - +

Immunohistochemistry (Formalin/PFA-fixed paraffin-embedded sections) - Anti-PKA alpha + beta (catalytic subunits) (phospho T197) antibody (ab59218)

ab59218 at 1/50 dilution staining PKA alpha + beta (catalytic subunit) in human colon carcinoma by Immunohistochemistry, Paraffin embedded tissue, in the absence (left) or presence (right) of the immunising peptide.



Western blot - Anti-PKA alpha + beta (catalytic subunits) (phospho T197) antibody (ab59218)

All lanes : Anti-PKA alpha + beta (catalytic subunits) (phospho T197) antibody (ab59218) at 1/500 dilution

Lane 1 : mouse brain cell extract

Lane 2 : mouse brain cell extract with immunising peptide

Predicted band size: 41 kDa

Observed band size: 41 kDa

Please note: All products are "FOR RESEARCH USE ONLY. NOT FOR USE IN DIAGNOSTIC PROCEDURES"

Our Abpromise to you: Quality guaranteed and expert technical support

- Replacement or refund for products not performing as stated on the datasheet
- Valid for 12 months from date of delivery
- Response to your inquiry within 24 hours
- We provide support in Chinese, English, French, German, Japanese and Spanish
- Extensive multi-media technical resources to help you
- We investigate all quality concerns to ensure our products perform to the highest standards

If the product does not perform as described on this datasheet, we will offer a refund or replacement. For full details of the Abpromise, please visit <https://www.abcam.cn/abpromise> or contact our technical team.

Terms and conditions

- Guarantee only valid for products bought direct from Abcam or one of our authorized distributors