


Anti-PITX2/RGS antibody ab98297

☆☆☆☆☆ [2 Abreviews](#) [3 References](#) [2 图像](#)

| | |
|---|---|
| 概述 | |
| 产品名称 | Anti-PITX2/RGS抗体 |
| 描述 | 兔多克隆抗体to PITX2/RGS |
| 宿主 | Rabbit |
| 特异性 | From Mar 2024, QC testing of replenishment batches of this polyclonal changed. All tested and expected application and reactive species combinations are still covered by our Abcam product promise. However, we no longer test all applications. For more information on a specific batch, please contact our Scientific Support who will be happy to help. |
| 经测试应用 | 适用于: ICC/IF, WB |
| 种属反应性 | 与反应: Human 预测可用于: Mouse, Dog  |
| 免疫原 | Synthetic peptide. This information is proprietary to Abcam and/or its suppliers. |
| 阳性对照 | This antibody gave a positive signal in Human Heart Tissue Lysate. |
| 常规说明 | <p>The Life Science industry has been in the grips of a reproducibility crisis for a number of years. Abcam is leading the way in addressing this with our range of recombinant monoclonal antibodies and knockout edited cell lines for gold-standard validation. Please check that this product meets your needs before purchasing.</p> <p>If you have any questions, special requirements or concerns, please send us an inquiry and/or contact our Support team ahead of purchase. Recommended alternatives for this product can be found below, along with publications, customer reviews and Q&As</p> |
| 性能 | |
| 形式 | Liquid |
| 存放说明 | Shipped at 4°C. Store at +4°C short term (1-2 weeks). Upon delivery aliquot. Store at -20°C or -80°C. Avoid freeze / thaw cycle. |
| 存储溶液 | pH: 7.40 Preservative: 0.02% Sodium azide Constituent: PBS |
| Batches of this product that have a concentration < 1mg/ml may have BSA added as a stabilising agent. If you would like information about the formulation of a specific lot, please contact our | |

| | |
|-----|--|
| | scientific support team who will be happy to help. |
| 纯度 | Immunogen affinity purified |
| 克隆 | 多克隆 |
| 同种型 | IgG |

应用

The Abpromise guarantee **Abpromise™** 承诺保证使用ab98297于以下的经测试应用

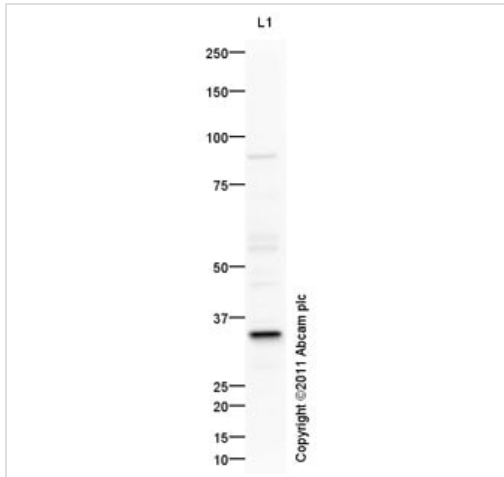
“应用说明”部分 下显示的仅为推荐的起始稀释度;实际最佳的稀释度/浓度应由使用者检定。

| 应用 | Ab评论 | 说明 |
|--------|-----------|--|
| ICC/IF | | Use a concentration of 1 µg/ml. |
| WB | ★☆☆☆☆ (1) | Use a concentration of 1 µg/ml. Detects a band of approximately 35 kDa (predicted molecular weight: 35 kDa). |

靶标

| | |
|-------|--|
| 功能 | May play an important role in development and maintenance of anterior structures. Isoform PTX2C is involved in left-right asymmetry the developing embryo. |
| 疾病相关 | <p>Defects in PITX2 are the cause of Axenfeld-Rieger syndrome type 1 (RIEG1) [MIM:180500]; also known as Rieger syndrome type 1. RIEG1 is an autosomal dominant defect characterized by hypodontia (partial anodontia), anal stenosis, hypertelorism, mental deficiency, agenesis of the facial bones, with malformation of the anterior chamber of the eye.</p> <p>Defects in PITX2 are the cause of iridogoniodysgenesis type 2 (IRID2) [MIM:137600]; also known as iridogoniodysgenesis syndrome 2 (IGDS2). It is an autosomal dominant inherited disease.</p> <p>Defects in PITX2 are a cause of Peters anomaly (PAN) [MIM:604229]. It is a congenital defect of the anterior chamber of the eye.</p> <p>Defects in PITX2 are associated with ring dermoid of cornea (RDC) [MIM:180550]. RDC is an autosomal dominantly inherited syndrome characterized by bilateral annular limbal dermoids with corneal and conjunctival extension.</p> |
| 序列相似性 | <p>Belongs to the paired homeobox family. Bicoid subfamily.</p> <p>Contains 1 homeobox DNA-binding domain.</p> |
| 细胞定位 | Nucleus. |

图片



Western blot - Anti-PITX2/RGS antibody (ab98297)

Anti-PITX2/RGS antibody (ab98297) at 1 µg/ml + Human heart tissue lysate - total protein ([ab29431](#)) at 10 µg

Secondary

Goat Anti-Rabbit IgG H&L (HRP) preadsorbed ([ab97080](#)) at 1/5000 dilution

Developed using the ECL technique.

Performed under reducing conditions.

Predicted band size: 35 kDa

Observed band size: 35 kDa

Additional bands at: 55 kDa, 60 kDa, 85 kDa. We are unsure as to the identity of these extra bands.

Exposure time: 4 minutes



Immunocytochemistry/ Immunofluorescence - Anti-PITX2/RGS antibody (ab98297)

ICC/IF image of ab98297 stained HeLa cells. The cells were 100% methanol fixed (5 min) and then incubated in 1%BSA / 10% normal goat serum / 0.3M glycine in 0.1% PBS-Tween for 1h to permeabilise the cells and block non-specific protein-protein interactions. The cells were then incubated with the antibody ab98297 at 1µg/ml overnight at +4°C. The secondary antibody (green) was DyLight® 488 goat anti- rabbit ([ab96899](#)) IgG (H+L) used at a 1/250 dilution for 1h. Alexa Fluor® 594 WGA was used to label plasma membranes (red) at a 1/200 dilution for 1h. DAPI was used to stain the cell nuclei (blue) at a concentration of 1.43µM. This antibody also gave a positive result in methanol fixed (100%, 5min) HepG2, HEK293, and MCF-7 cell lines at 1ug/ml

Please note: All products are "FOR RESEARCH USE ONLY. NOT FOR USE IN DIAGNOSTIC PROCEDURES"

Our Abpromise to you: Quality guaranteed and expert technical support

- Replacement or refund for products not performing as stated on the datasheet
- Valid for 12 months from date of delivery
- Response to your inquiry within 24 hours
- We provide support in Chinese, English, French, German, Japanese and Spanish
- Extensive multi-media technical resources to help you
- We investigate all quality concerns to ensure our products perform to the highest standards

If the product does not perform as described on this datasheet, we will offer a refund or replacement. For full details of the Abpromise, please visit <https://www.abcam.cn/abpromise> or contact our technical team.

Terms and conditions

- Guarantee only valid for products bought direct from Abcam or one of our authorized distributors