

# Anti-PITX1/BFT antibody ab70273

[9 References](#) [2 图像](#)

### 概述

---

产品名称	Anti-PITX1/BFT抗体
描述	兔多克隆抗体to PITX1/BFT
宿主	Rabbit
经测试应用	适用于: WB, IP
种属反应性	与反应: Human 预测可用于: Cow, Chimpanzee, Gorilla, Orangutan, Elephant 
免疫原	Synthetic peptide corresponding to Human PITX1/BFT (N terminal). Database link: <a href="#">NP_002644.3</a>
阳性对照	HeLa whole cell lysate ( <a href="#">ab150035</a> )
常规说明	<p>The Life Science industry has been in the grips of a reproducibility crisis for a number of years. Abcam is leading the way in addressing this with our range of recombinant monoclonal antibodies and knockout edited cell lines for gold-standard validation. Please check that this product meets your needs before purchasing.</p> <p>If you have any questions, special requirements or concerns, please send us an inquiry and/or contact our Support team ahead of purchase. Recommended alternatives for this product can be found below, along with publications, customer reviews and Q&amp;As</p>

### 性能

---

形式	Liquid
存放说明	Shipped at 4°C. Upon delivery aliquot and store at -20°C. Avoid freeze / thaw cycles.
存储溶液	pH: 7 Preservative: 0.09% Sodium azide Constituents: 1.815% Tris, 1.764% Sodium citrate, 0.021% PBS
纯度	Immunogen affinity purified
克隆	多克隆
同种型	IgG

### 应用

---

## The Abpromise guarantee

**Abpromise™** 承诺保证使用 ab70273 于以下的经测试应用

“应用说明”部分 下显示的仅为推荐的起始稀释度;实际最佳的稀释度/浓度应由使用者检定。

应用	Ab评论	说明
WB		1/2500 - 1/10000. Detects a band of approximately 40 kDa (predicted molecular weight: 34 kDa).
IP		Use at 1-4 µg/mg of lysate.

## 靶标

### 功能

May play a role in the development of anterior structures, and in particular, the brain and facies and in specifying the identity or structure of hindlimb.

### 疾病相关

Defects in PITX1 are a cause of congenital clubfoot (CCF) [MIM:119800]; also known as talipes equinovarus (TEV). Clubfoot is a congenital limb deformity defined as fixation of the foot in cavus, adductus, varus, and equinus (i.e. inclined inwards, axially rotated outwards, and pointing downwards) with concomitant soft tissue abnormalities. Clubfoot may occur in isolation or as part of a syndrome. Clubfoot appears to be a multifactorial trait.

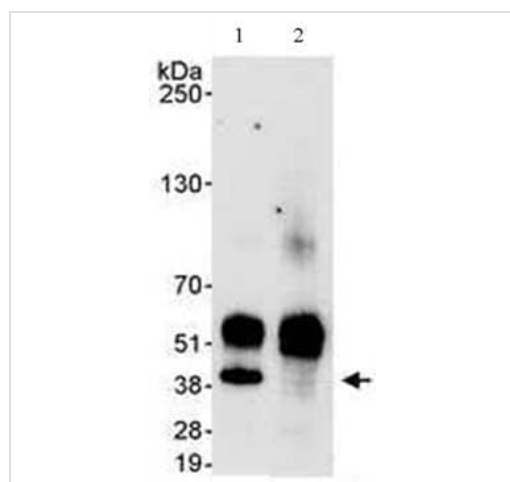
### 序列相似性

Belongs to the paired homeobox family. Bicoid subfamily.  
Contains 1 homeobox DNA-binding domain.

### 细胞定位

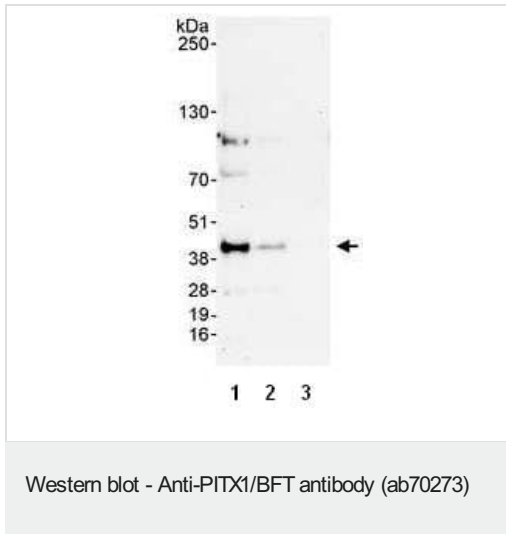
Nucleus.

## 图片



Immunoprecipitation - Anti-PITX1/BFT antibody  
(ab70273)

HeLa whole cell lysate (1 mg) was immunoprecipitated using ab70273 at 3 µg/mg lysate (lane 1) or an IgG control (lane 2). One quarter of the total IP reaction was loaded on to a gel and analysed by Western blot using ab70273 at 1 µg/ml. Bands were detected using chemiluminescence with an exposure time of 30 seconds.



**All lanes** : Anti-PITX1/BFT antibody (ab70273) at 0.1 µg/ml

**Lane 1** : HeLa whole cell lysate at 50 µg

**Lane 2** : HeLa whole cell lysate at 15 µg

**Lane 3** : HeLa whole cell lysate at 5 µg

**Predicted band size:** 34 kDa

**Observed band size:** 40 kDa

**Exposure time:** 3 minutes

**Please note:** All products are "FOR RESEARCH USE ONLY. NOT FOR USE IN DIAGNOSTIC PROCEDURES"

### Our Abpromise to you: Quality guaranteed and expert technical support

- Replacement or refund for products not performing as stated on the datasheet
- Valid for 12 months from date of delivery
- Response to your inquiry within 24 hours
- We provide support in Chinese, English, French, German, Japanese and Spanish
- Extensive multi-media technical resources to help you
- We investigate all quality concerns to ensure our products perform to the highest standards

If the product does not perform as described on this datasheet, we will offer a refund or replacement. For full details of the Abpromise, please visit <https://www.abcam.cn/abpromise> or contact our technical team.

### Terms and conditions

- Guarantee only valid for products bought direct from Abcam or one of our authorized distributors