

Anti-PIP5K1 alpha/PIP5K1A antibody ab122049

3 图像

概述

产品名称	Anti-PIP5K1 alpha/PIP5K1A抗体
描述	兔多克隆抗体to PIP5K1 alpha/PIP5K1A
宿主	Rabbit
经测试应用	适用于: WB, ICC/IF, IHC-P
种属反应性	与反应: Human
免疫原	Recombinant fragment corresponding to Human PIP5K1 alpha/PIP5K1A aa 266-389. Database link: Q99755
阳性对照	Human tonsil tissue; RT-4 and U-251 MG cells lysate; Human cell line A-431
常规说明	<p>The Life Science industry has been in the grips of a reproducibility crisis for a number of years. Abcam is leading the way in addressing this with our range of recombinant monoclonal antibodies and knockout edited cell lines for gold-standard validation. Please check that this product meets your needs before purchasing.</p> <p>If you have any questions, special requirements or concerns, please send us an inquiry and/or contact our Support team ahead of purchase. Recommended alternatives for this product can be found below, along with publications, customer reviews and Q&As</p>

性能

形式	Liquid
存放说明	Shipped at 4°C. Upon delivery aliquot and store at -20°C. Avoid repeated freeze / thaw cycles.
存储溶液	pH: 7.20 Preservative: 0.02% Sodium azide Constituents: 59% PBS, 40% Glycerol (glycerin, glycerine)
纯度	Immunogen affinity purified
克隆	多克隆
同种型	IgG

应用

The Abpromise guarantee

Abpromise™ 承诺保证使用ab122049于以下的经测试应用

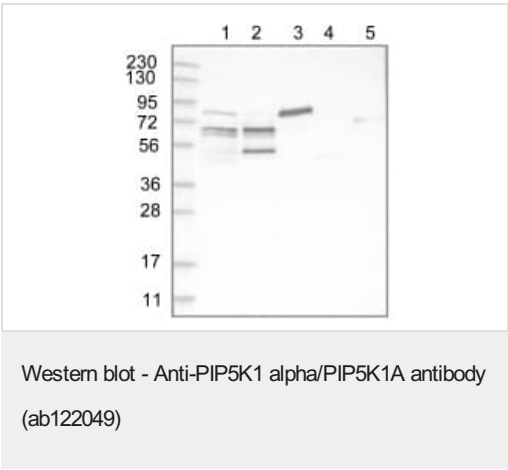
“应用说明”部分 下显示的仅为推荐的起始稀释度;实际最佳的稀释度/浓度应由使用者检定。

应用	Ab评论	说明
WB		Use a concentration of 0.04 - 0.4 µg/ml.
ICC/IF		Use a concentration of 0.25 - 2 µg/ml.
IHC-P		1/50 - 1/200. Perform heat mediated antigen retrieval with citrate buffer pH 6 before commencing with IHC staining protocol.

靶标

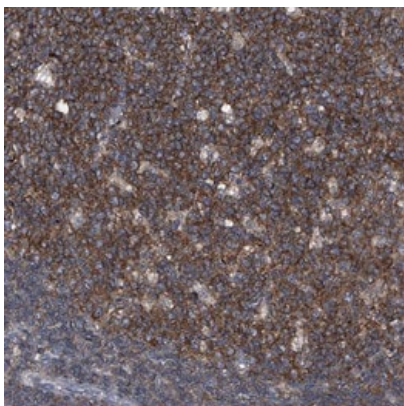
功能	Participates in the biosynthesis of phosphatidylinositol-4,5-bisphosphate. Mediates RAC1-dependent reorganization of actin filaments. Acts as an activator of TUT1 adenylyltransferase activity in nuclear speckles, thereby regulating mRNA polyadenylation of a select set of mRNAs. Contributes to the activation of PLD2.
组织特异性	Highly expressed in heart, placenta, skeletal muscle, kidney and pancreas. Detected at lower levels in brain, lung and liver.
序列相似性	Contains 1 PIPK domain.
细胞定位	Cell membrane. Endomembrane system. Golgi apparatus > Golgi stack. Nucleus speckle. Associated with the plasma membrane and with internal membranes. Associated with Golgi stacks (By similarity). Detected on RAC1-induced plasma membrane ruffles, and on membrane ruffles induced by platelet-derived growth factor. Localizes to nuclear speckles and associates with TUT1 to regulate polyadenylation of selected mRNAs.

图片



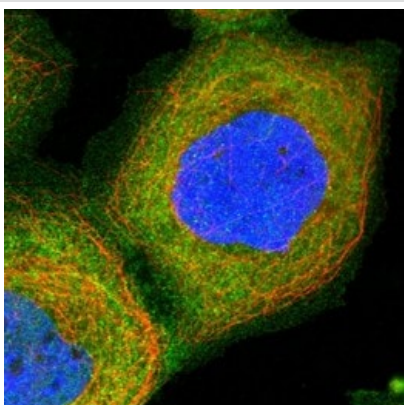
All lanes : Anti-PIP5K1 alpha/PIP5K1A antibody (ab122049) at 1/250 dilution

- Lane 1 :** RT-4 cells lysate
- Lane 2 :** U-251 MG cells lysate
- Lane 3 :** Human plasma lysate
- Lane 4 :** Human Liver lysate
- Lane 5 :** Human Tonsil lysate



ab122049, at 1/125, staining PIP5K1 alpha/PIP5K1A in paraffin embedded Human tonsil tissue by Immunohistochemistry.

Immunohistochemistry (Formalin/PFA-fixed paraffin-embedded sections) - Anti-PIP5K1 alpha/PIP5K1A antibody (ab122049)



ab122049, at 4 µg/ml, staining PIP5K1 alpha/PIP5K1A in Human cell line A-431 by Immunofluorescence.

Immunocytochemistry/ Immunofluorescence - Anti-PIP5K1 alpha/PIP5K1A antibody (ab122049)

Please note: All products are "FOR RESEARCH USE ONLY. NOT FOR USE IN DIAGNOSTIC PROCEDURES"

Our Abpromise to you: Quality guaranteed and expert technical support

- Replacement or refund for products not performing as stated on the datasheet
- Valid for 12 months from date of delivery
- Response to your inquiry within 24 hours
- We provide support in Chinese, English, French, German, Japanese and Spanish
- Extensive multi-media technical resources to help you

- We investigate all quality concerns to ensure our products perform to the highest standards

If the product does not perform as described on this datasheet, we will offer a refund or replacement. For full details of the Abpromise, please visit <https://www.abcam.cn/abpromise> or contact our technical team.

Terms and conditions

- Guarantee only valid for products bought direct from Abcam or one of our authorized distributors