

Anti-PIM2 antibody ab93667

1 图像

概述

产品名称	Anti-PIM2抗体
描述	兔多克隆抗体to PIM2
宿主	Rabbit
经测试应用	适用于: IHC-P
种属反应性	与反应: Human
免疫原	Synthetic peptide within Human PIM2 aa 250 to the C-terminus (C terminal). The exact sequence is proprietary. Database link: Q9P1W9
阳性对照	Human B cell lymphoma tissue
常规说明	<p>This product is FOR RESEARCH USE ONLY. For commercial use, please contact partnerships@abcam.com.</p> <p>The Life Science industry has been in the grips of a reproducibility crisis for a number of years. Abcam is leading the way in addressing this with our range of recombinant monoclonal antibodies and knockout edited cell lines for gold-standard validation. Please check that this product meets your needs before purchasing.</p> <p>If you have any questions, special requirements or concerns, please send us an inquiry and/or contact our Support team ahead of purchase. Recommended alternatives for this product can be found below, along with publications, customer reviews and Q&As</p>

性能

形式	Liquid
存放说明	Shipped at 4°C. Store at +4°C.
存储溶液	pH: 7.60 Preservative: 0.1% Sodium azide Constituents: PBS, 1% BSA
纯度	Immunogen affinity purified
纯化说明	Immunogen affinity purified immunoglobulin from rabbit serum.
克隆	多克隆
同种型	IgG

应用

The Abpromise guarantee **Abpromise™**承诺保证使用ab93667于以下的经测试应用

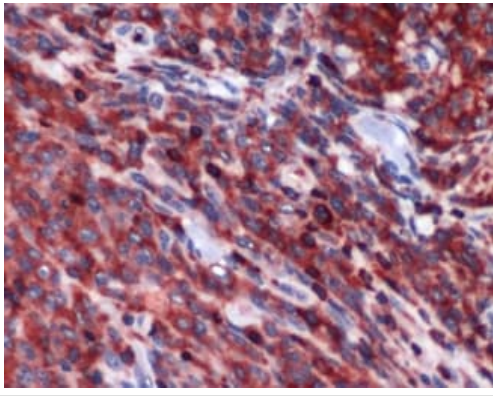
“应用说明”部分 下显示的仅为推荐的起始稀释度;实际最佳的稀释度/浓度应由使用者检定。

应用	Ab评论	说明
IHC-P		1/100. Perform heat mediated antigen retrieval with citrate buffer pH 6 before commencing with IHC staining protocol. 1/100 for 30 minutes at room temperature. Perform heat mediated antigen retrieval before commencing with IHC staining protocol. Boil tissue section in 1mM EDTA, pH 8.0 for 10 minutes followed by cooling at room temperature for 20 minutes.

靶标

功能	Promotes cell survival in response to a variety of proliferative signals via positive regulation of the I-kappaB kinase/NF-kappaB cascade; this process requires phosphorylation of MAP3K8/COT. Prevents apoptosis induced by growth factor withdrawal via inhibition of caspase-3 activation, and via phosphorylation of pro-apoptotic proteins. Inhibits BAD-induced cell death via phosphorylation of BAD. PIM2-mediated cell survival is glucose-dependent but independent of several AKT regulators such as PI3K, HSP-90 and TOR, indicating that PIM2 and PI3K/AKT/TOR function via distinct pathways. Involved in the positive regulation of chondrocyte survival and autophagy in the epiphyseal growth plate.
组织特异性	Highly expressed in hematopoietic tissues, in leukemic and lymphoma cell lines, testis, small intestine, colon and colorectal adenocarcinoma cells. Weakly expressed in normal liver, but highly expressed in hepatocellular carcinoma tissues.
序列相似性	Belongs to the protein kinase superfamily. CAMK Ser/Thr protein kinase family. PIM subfamily. Contains 1 protein kinase domain.
翻译后修饰	Autophosphorylated.

图片



Immunohistochemistry (Formalin/PFA-fixed paraffin-embedded sections) - Anti-PIM2 antibody (ab93667)

ab93667, at a 1/100 dilution, staining PIM2 in formalin fixed, paraffin embedded Human B cell lymphoma tissue by Immunohistochemistry.

Please note: All products are "FOR RESEARCH USE ONLY. NOT FOR USE IN DIAGNOSTIC PROCEDURES"

Our Abpromise to you: Quality guaranteed and expert technical support

- Replacement or refund for products not performing as stated on the datasheet
- Valid for 12 months from date of delivery
- Response to your inquiry within 24 hours
- We provide support in Chinese, English, French, German, Japanese and Spanish
- Extensive multi-media technical resources to help you
- We investigate all quality concerns to ensure our products perform to the highest standards

If the product does not perform as described on this datasheet, we will offer a refund or replacement. For full details of the Abpromise, please visit <https://www.abcam.cn/abpromise> or contact our technical team.

Terms and conditions

- Guarantee only valid for products bought direct from Abcam or one of our authorized distributors