


Anti-PIG3 antibody ab64798

4 References [1 图像](#)

概述

产品名称	Anti-PIG3抗体
描述	兔多克隆抗体to PIG3
宿主	Rabbit
经测试应用	适用于: WB
种属反应性	与反应: Human 预测可用于: Cow, Chimpanzee, Rhesus monkey 
免疫原	Synthetic peptide conjugated to KLH derived from within residues 300 to the C-terminus of Human PIG3.参阅Abcam的专有抗源政策(Peptide available as ab68589 .)
阳性对照	Recombinant Human PIG3 protein (ab95857) can be used as a positive control in WB. This antibody gave a positive signal in the following lysates: Caco2, A549, WI-38, SW480, TE671, Human Lung Tissue, Human Skeletal Muscle Tissue, Human Colon Tissue
常规说明	<p>The Life Science industry has been in the grips of a reproducibility crisis for a number of years. Abcam is leading the way in addressing this with our range of recombinant monoclonal antibodies and knockout edited cell lines for gold-standard validation. Please check that this product meets your needs before purchasing.</p> <p>If you have any questions, special requirements or concerns, please send us an inquiry and/or contact our Support team ahead of purchase. Recommended alternatives for this product can be found below, along with publications, customer reviews and Q&As</p>

性能

形式	Liquid
存放说明	Shipped at 4°C. Store at +4°C short term (1-2 weeks). Upon delivery aliquot. Store at -20°C or -80°C. Avoid freeze / thaw cycle.
存储溶液	pH: 7.40 Preservative: 0.02% Sodium azide Constituent: PBS
	Batches of this product that have a concentration < 1mg/ml may have BSA added as a stabilising agent. If you would like information about the formulation of a specific lot, please contact our scientific support team who will be happy to help.

应用

The Abpromise guarantee

“应用说明”部分下显示的仅为推荐的起始稀释度;实际最佳的稀释度/浓度应由使用者检定。

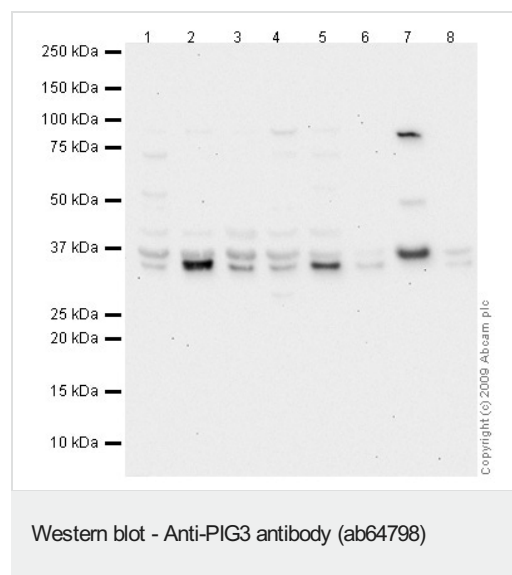
应用	Ab评论	说明
WB		Use a concentration of 1 µg/ml. Detects a band of approximately 35 kDa (predicted molecular weight: 35 kDa).

靶标

功能	May be involved in the generation of reactive oxygen species (ROS). Has low NADPH-dependent naphtoquinone reductase activity, with a preference for 1,2-naphtoquinone over 1,4-naphtoquinone. Has low NADPH-dependent diamine reductase activity (in vitro).
----	--

序列相似性 Belongs to the zinc-containing alcohol dehydrogenase family. Quinone oxidoreductase subfamily.

图片



All lanes : Anti-PIG3 antibody (ab64798) at 1 μ g/ml

Lane 1 : Caco-2 whole cell lysate ([ab3950](#))

Lane 2 : A549 (Human lung adenocarcinoma epithelial cell line)
Whole Cell Lysate

Lane 3 : WI38 (Human lung fibroblast cell line) Whole Cell Lysate

Lane 4 : SW480 (Human colon adenocarcinoma cell line) Whole Cell Lysate

Lane 5 : TE 671 (Human Rhabdomyosarcoma) Whole Cell Lysate

Lane 6 : Lung (Human) Tissue Lysate

Lane 7 : Human skeletal muscle tissue lysate - total protein (ab29330)

Lane 8 : Human colon tissue lysate - total protein (**ab30051**)

Lysates/proteins at 10 μ g per lane.

Secondary

All lanes : Goat polyclonal to Rabbit IgG - H&L - Pre-Adsorbed (HRP) at 1/3000 dilution

Performed under reducing conditions.

Predicted band size: 35 kDa

Observed band size: 35 kDa

Exposure time: 2 minutes

Please note: All products are "FOR RESEARCH USE ONLY. NOT FOR USE IN DIAGNOSTIC PROCEDURES"

Our Abpromise to you: Quality guaranteed and expert technical support

- Replacement or refund for products not performing as stated on the datasheet
- Valid for 12 months from date of delivery
- Response to your inquiry within 24 hours
- We provide support in Chinese, English, French, German, Japanese and Spanish
- Extensive multi-media technical resources to help you
- We investigate all quality concerns to ensure our products perform to the highest standards

If the product does not perform as described on this datasheet, we will offer a refund or replacement. For full details of the Abpromise, please visit <https://www.abcam.cn/abpromise> or contact our technical team.

Terms and conditions

- Guarantee only valid for products bought direct from Abcam or one of our authorized distributors