


Anti-PIBF antibody ab72118

1 References [2 图像](#)

概述

产品名称	Anti-PIBF抗体
描述	兔多克隆抗体to PIBF
宿主	Rabbit
经测试应用	适用于: WB, IP
种属反应性	与反应: Human 预测可用于: Rabbit, Horse, Dog, Rhesus monkey, Gorilla, Bat 
免疫原	Synthetic peptide within Human PIBF aa 735-757. The exact sequence is proprietary. Database link: NP_006337.2
阳性对照	WB: HeLa and 293T whole cell lysates. IP: HeLa whole cell lysate (ab150035).
常规说明	<p>The Life Science industry has been in the grips of a reproducibility crisis for a number of years. Abcam is leading the way in addressing this with our range of recombinant monoclonal antibodies and knockout edited cell lines for gold-standard validation. Please check that this product meets your needs before purchasing.</p> <p>If you have any questions, special requirements or concerns, please send us an inquiry and/or contact our Support team ahead of purchase. Recommended alternatives for this product can be found below, along with publications, customer reviews and Q&As</p>

性能

形式	Liquid
存放说明	Shipped at 4°C. Upon delivery aliquot and store at -20°C. Avoid freeze / thaw cycles.
存储溶液	pH: 6.8 Preservative: 0.09% Sodium azide Constituents: 0.1% BSA, Tris buffered saline
纯度	Immunogen affinity purified
纯化说明	ab72118 was affinity purified using an epitope specific to PIBF immobilized on solid support.
克隆	多克隆
同种型	IgG

The Abpromise guarantee

Abpromise™承诺保证使用ab72118于以下的经测试应用

“应用说明”部分 下显示的仅为推荐的起始稀释度;实际最佳的稀释度/浓度应由使用者检定。

应用	Ab评论	说明
WB		1/2000 - 1/10000. Detects a band of approximately 90 kDa (predicted molecular weight: 90 kDa).
IP		Use at 2-5 µg/mg of lysate.

靶标

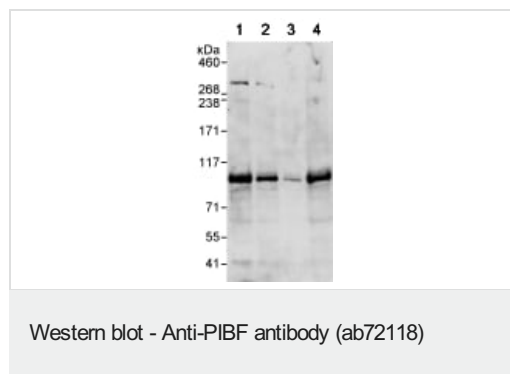
功能

Mediator of progesterone that by acting on the phospholipase A2 enzyme interferes with arachidonic acid metabolism, induces a Th2 biased immune response, and by controlling NK activity exerts an anti-abortive effect.

组织特异性

Expressed at highest levels in testis. Moderate expression is detected in spleen, thymus, prostate, ovary, small intestine, and colon.

图片



All lanes : Anti-PIBF antibody (ab72118) at 0.04 µg/ml

Lane 1 : HeLa whole cell lysate at 50 µg

Lane 2 : HeLa whole cell lysate at 15 µg

Lane 3 : HeLa whole cell lysate at 5 µg

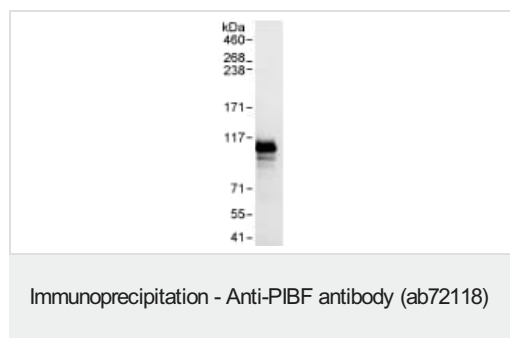
Lane 4 : 293T whole cell lysate at 50 µg

Developed using the ECL technique.

Predicted band size: 90 kDa

Observed band size: 90 kDa

Exposure time: 30 seconds



Detection of PIBF by Western Blot of Immunoprecipitate.

ab72118 at 1 µg/ml staining PIBF in HeLa whole cell lysate

immunoprecipitated using ab72118 at 3 µg/mg lysate (1 mg/IP;

20% of IP loaded/lane).

Detection: Chemiluminescence with exposure time of 10 seconds.

Please note: All products are "FOR RESEARCH USE ONLY. NOT FOR USE IN DIAGNOSTIC PROCEDURES"

Our Abpromise to you: Quality guaranteed and expert technical support

- Replacement or refund for products not performing as stated on the datasheet
- Valid for 12 months from date of delivery
- Response to your inquiry within 24 hours

- We provide support in Chinese, English, French, German, Japanese and Spanish
- Extensive multi-media technical resources to help you
- We investigate all quality concerns to ensure our products perform to the highest standards

If the product does not perform as described on this datasheet, we will offer a refund or replacement. For full details of the Abpromise, please visit <https://www.abcam.cn/abpromise> or contact our technical team.

Terms and conditions

- Guarantee only valid for products bought direct from Abcam or one of our authorized distributors