

### Anti-PI3 Kinase p110 beta antibody [EPR5515(2)] ab151549

重组 RabMAb

★★★★★ **2 Abreviews** **92 References** **9 图像**

#### 概述

产品名称	Anti-PI3 Kinase p110 beta抗体[EPR5515(2)]
描述	兔单克隆抗体[EPR5515(2)] to PI3 Kinase p110 beta
宿主	Rabbit
经测试应用	<b>适用于:</b> Flow Cyt (Intra), WB, ICC/IF <b>不适用于:</b> IHC-P
种属反应性	<b>与反应:</b> Mouse, Rat, Human
免疫原	Synthetic peptide within Human PI3 Kinase p110 beta aa 400-500. The exact sequence is proprietary.
阳性对照	MCF-7, Jurkat, K562 and 293T cell lysates; Human brain tissue; 293 cells. Rat Brain Lysate, Mouse Brain Lysate
常规说明	This product is a recombinant monoclonal antibody, which offers several advantages including: <ul style="list-style-type: none"> <li>- High batch-to-batch consistency and reproducibility</li> <li>- Improved sensitivity and specificity</li> <li>- Long-term security of supply</li> <li>- Animal-free production</li> </ul> For more information <a href="#">see here</a> . Our RabMAb® technology is a patented hybridoma-based technology for making rabbit monoclonal antibodies. For details on our patents, please refer to <a href="#">RabMAb® patents</a> .

#### 性能

形式	Liquid
存放说明	Shipped at 4°C. Store at -20°C.
存储溶液	Preservative: 0.01% Sodium azide Constituents: 40% Glycerol (glycerin, glycerine), 0.05% BSA, 59% PBS
纯度	Protein A purified
克隆	单克隆
克隆编号	EPR5515(2)
同种型	IgG

应用

The Abpromise guarantee      **Abpromise™**承诺保证使用ab151549于以下的经测试应用

“应用说明”部分 下显示的仅为推荐的起始稀释度;实际最佳的稀释度/浓度应由使用者检定。

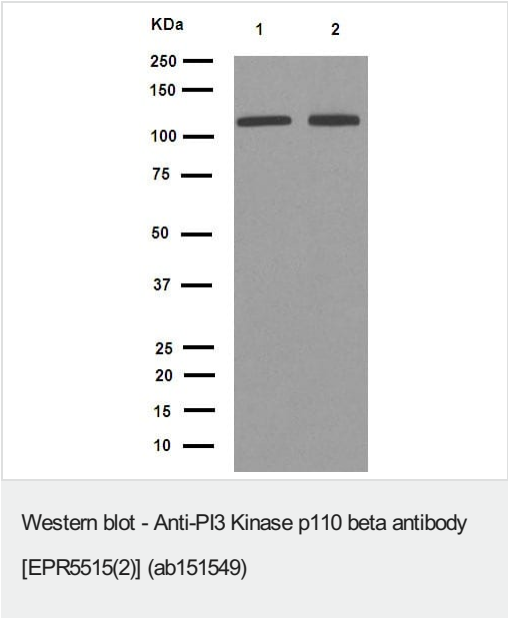
应用	Ab评论	说明
Flow Cyt (Intra)		1/20. For unpurified use at 1/100 - 1/1000. <b>ab172730</b> - Rabbit monoclonal IgG, is suitable for use as an isotype control with this antibody.
WB	★★★★★ (2)	1/1000. Predicted molecular weight: 123 kDa. <b>For unpurified use at 1/1000 - 1/10000.</b>
ICC/IF		1/150. <b>For unpurified use at 1/250 - 1/500.</b>

应用说明      Is unsuitable for IHC-P.

靶标

- 功能**      Phosphorylates PtdIns, PtdIns4P and PtdIns(4,5)P2 with a preference for PtdIns(4,5)P2.
- 组织特异性**      Expressed ubiquitously.
- 通路**      Phospholipid metabolism; phosphatidylinositol phosphate biosynthesis.
- 序列相似性**      Belongs to the PI3/PI4-kinase family.  
Contains 1 PI3K/PI4K domain.

图片



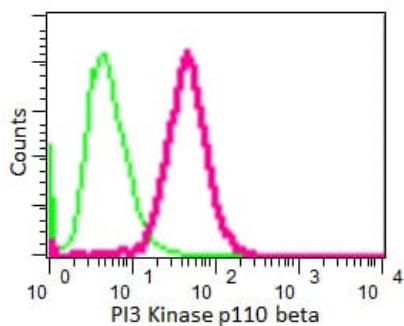
**All lanes** : Anti-PI3 Kinase p110 beta antibody [EPR5515(2)]  
(ab151549) at 1/1000 dilution

**Lane 1** : Rat Brain Lysate  
**Lane 2** : Mouse Brain Lysate

Lysates/proteins at 10 µg per lane.

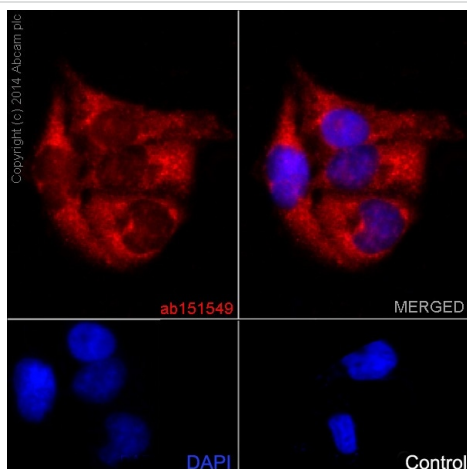
**Secondary**  
**All lanes** : Goat Anti-Rabbit IgG, (H+L), HRP- conjugated at 1/1000 dilution

**Predicted band size:** 123 kDa



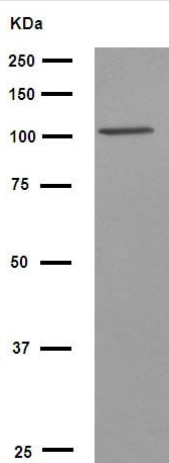
Flow Cytometry (Intracellular) - Anti-PI3 Kinase p110 beta antibody [EPR5515(2)] (ab151549)

Overlay histogram showing SH-SY5Y cells stained with **ab131260** (red line) at 1/20 dilution. The cells were fixed with 2% Paraformaldehyde. The secondary antibody used was a FITC conjugated goat anti-rabbit IgG at 1/150 dilution. Isotype control antibody (green line) was rabbit monoclonal IgG used under the same conditions.



Immunocytochemistry/ Immunofluorescence - Anti-PI3 Kinase p110 beta antibody [EPR5515(2)] (ab151549)

ab151549 staining PI3 Kinase p110 in the HeLa cell line by ICC/IF (Immunocytochemistry/immunofluorescence). Cells were fixed with 4% Paraformaldehyde permeabilized with 0.1% Triton X-100. Samples were incubated with primary antibody (1/150). **ab150082** an Alexa Fluor®555-conjugated Goat anti-rabbit IgG(1/500) was used as the secondary antibody. Nuclei were counterstained with DAPI.



Western blot - Anti-PI3 Kinase p110 beta antibody [EPR5515(2)] (ab151549)

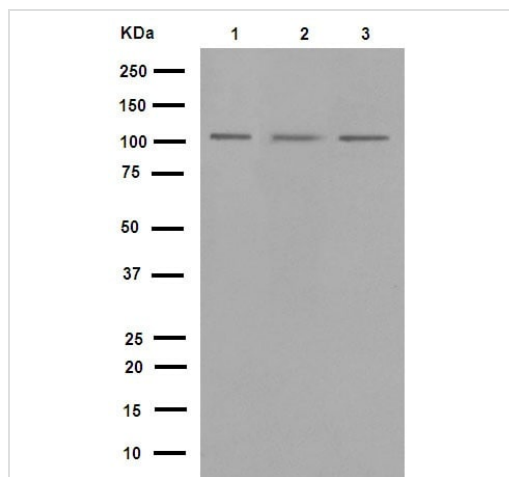
Anti-PI3 Kinase p110 beta antibody [EPR5515(2)] (ab151549) at 1/5000 dilution + K562 Cell Lysate at 10 µg

#### Secondary

Goat Anti-Rabbit IgG, (H+L), HRP- conjugated at 1/1000 dilution

**Predicted band size:** 123 kDa

**Observed band size:** 110 kDa



Western blot - Anti-PI3 Kinase p110 beta antibody [EPR5515(2)] (ab151549)

**All lanes :** Anti-PI3 Kinase p110 beta antibody [EPR5515(2)] (ab151549) at 1/1000 dilution

**Lane 1 :** 293 Cell Lysate

**Lane 2 :** Jurkat Cell Lysate

**Lane 3 :** MCF-7 Cell Lysate

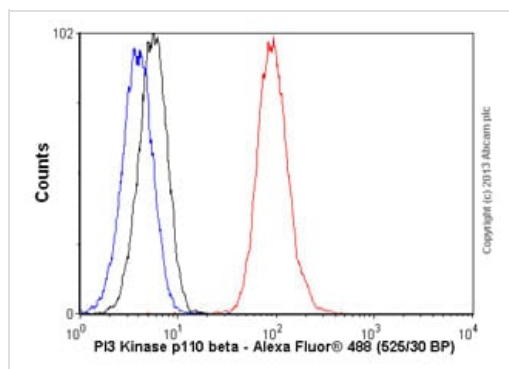
Lysates/proteins at 10 µg per lane.

### Secondary

**All lanes :** Goat Anti-Rabbit IgG, (H+L), HRP- conjugated at 1/1000 dilution

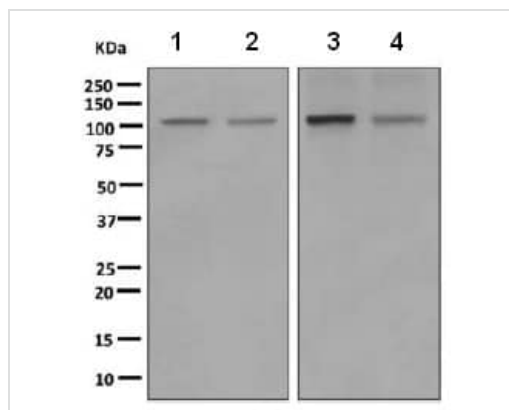
**Predicted band size:** 123 kDa

**Observed band size:** 110 kDa



Flow Cytometry (Intracellular) - Anti-PI3 Kinase p110 beta antibody [EPR5515(2)] (ab151549)

Overlay histogram showing HeLa cells stained with unpurified ab151549 (red line). The cells were fixed with 80% methanol (5 min) and then permeabilized with 0.1% PBS-Tween for 20 min. The cells were then incubated in 1x PBS / 10% normal goat serum / 0.3M glycine to block non-specific protein-protein interactions followed by the antibody (ab151549, 1/1000 dilution) for 30 min at 22°C. The secondary antibody used was Alexa Fluor® 488 goat anti-rabbit IgG (H&L) (**ab150077**) at 1/2000 dilution for 30 min at 22°C. Isotype control antibody (black line) was rabbit IgG (monoclonal) (0.1 µg/1x10<sup>6</sup> cells) used under the same conditions. Unlabelled sample (blue line) was also used as a control. Acquisition of >5,000 events were collected using a 20mW Argon ion laser (488nm) and 525/30 bandpass filter. This antibody gave a positive signal in HeLa cells fixed with 4% paraformaldehyde (10 min)/permeabilized with 0.1% PBS-Tween for 20 min used under the same conditions.



Western blot - Anti-PI3 Kinase p110 beta antibody [EPR5515(2)] (ab151549)

**All lanes** : Anti-PI3 Kinase p110 beta antibody [EPR5515(2)] (ab151549) at 1/1000 dilution (unpurified)

**Lane 1** : MCF7 cell lysate

**Lane 2** : Jurkat cell lysate

**Lane 3** : K562 cell lysate

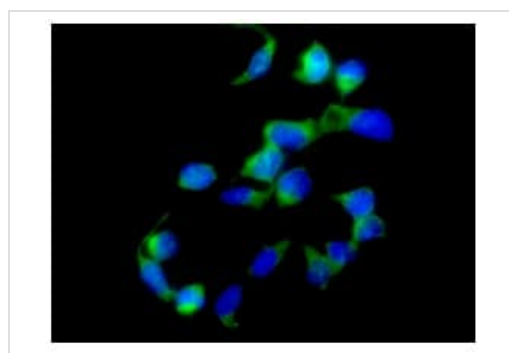
**Lane 4** : 293T cell lysate

Lysates/proteins at 10 µg per lane.

### Secondary

**All lanes** : HRP labelled goat anti-rabbit at 1/2000 dilution

**Predicted band size:** 123 kDa



Immunocytochemistry/ Immunofluorescence - Anti-PI3 Kinase p110 beta antibody [EPR5515(2)] (ab151549)

Immunofluorescent analysis of 293 cells labelling PI3 Kinase p110 beta with unpurified ab151549 at 1/10 dilution.

### Why choose a recombinant antibody?



**Research with confidence**  
Consistent and reproducible results



**Long-term and scalable supply**  
Recombinant technology



**Success from the first experiment**  
Confirmed specificity



**Ethical standards compliant**  
Animal-free production

Anti-PI3 Kinase p110 beta antibody [EPR5515(2)]  
(ab151549)

**Please note:** All products are "FOR RESEARCH USE ONLY. NOT FOR USE IN DIAGNOSTIC PROCEDURES"

### Our Abpromise to you: Quality guaranteed and expert technical support

- Replacement or refund for products not performing as stated on the datasheet
- Valid for 12 months from date of delivery
- Response to your inquiry within 24 hours
- We provide support in Chinese, English, French, German, Japanese and Spanish
- Extensive multi-media technical resources to help you
- We investigate all quality concerns to ensure our products perform to the highest standards

If the product does not perform as described on this datasheet, we will offer a refund or replacement. For full details of the Abpromise, please visit <https://www.abcam.cn/abpromise> or contact our technical team.

### Terms and conditions

- Guarantee only valid for products bought direct from Abcam or one of our authorized distributors