


Anti-PHYH antibody ab118195

2 图像

概述	
产品名称	Anti-PHYH抗体
描述	兔多克隆抗体to PHYH
宿主	Rabbit
经测试应用	适用于: WB, IHC-P
种属反应性	与反应: Human 预测可用于: Mouse, Rat 
免疫原	Recombinant fragment, corresponding to amino acids 34-321 of Human PHYH (BC029512).
阳性对照	Human fetal kidney and liver lysates; Human breast carcinoma tissue
常规说明	<p>The Life Science industry has been in the grips of a reproducibility crisis for a number of years. Abcam is leading the way in addressing this with our range of recombinant monoclonal antibodies and knockout edited cell lines for gold-standard validation. Please check that this product meets your needs before purchasing.</p> <p>If you have any questions, special requirements or concerns, please send us an inquiry and/or contact our Support team ahead of purchase. Recommended alternatives for this product can be found below, along with publications, customer reviews and Q&As</p>
性能	
形式	Lyophilized:Reconstitute in 200µl sterile water
存放说明	Shipped at 4°C. Upon delivery aliquot and store at -20°C. Avoid repeated freeze / thaw cycles.
存储溶液	pH: 7.20 Preservative: 0.02% Sodium azide Constituents: 98% PBS, 1% BSA
纯度	Immunogen affinity purified
克隆	多克隆
同种型	IgG
应用	

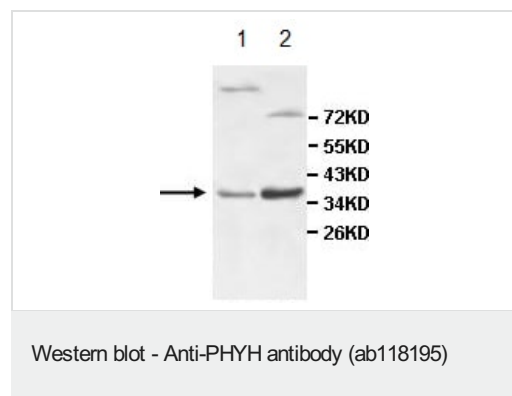
“应用说明”部分 下显示的仅为推荐的起始稀释度;实际最佳的稀释度/浓度应由使用者检定。

应用	Ab评论	说明
WB		1/500 - 1/1000. Predicted molecular weight: 39 kDa.
IHC-P		1/100 - 1/500.

靶标

功能	Converts phytanoyl-CoA to 2-hydroxyphytanoyl-CoA.
组织特异性	Expressed in liver, kidney, and T-cells, but not in spleen, brain, heart, lung and skeletal muscle.
通路	Lipid metabolism; fatty acid metabolism.
疾病相关	Defects in PHYH are a cause of Refsum disease (RD) [MIM:266500]. RD is an autosomal recessive disorder characterized clinically by a tetrad of abnormalities: retinitis pigmentosa, peripheral neuropathy, cerebellar ataxia, and elevated protein levels in the cerebrospinal fluid (CSF). Patients exhibit accumulation of the branched-chain fatty acid, phytanic acid, in blood and tissues. Less constant features are nerve deafness, anosmia, skeletal abnormalities, ichthyosis, cataracts and cardiac impairment. Manifestations of the disease appear in the second or third decade of life.
序列相似性	Belongs to the PhyH family.
细胞定位	Peroxisome.

图片

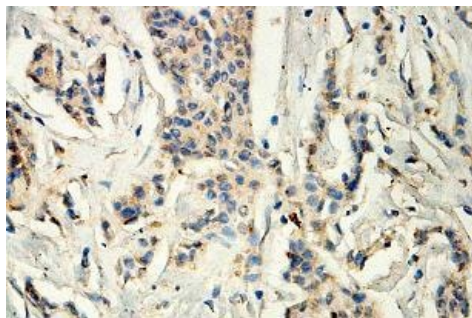


All lanes : Anti-PHYH antibody (ab118195) at 1/500 dilution

Lane 1 : Human fetal kidney lysate

Lane 2 : Human fetal liver lysate

Predicted band size: 39 kDa



Immunohistochemistry (Formalin/PFA-fixed paraffin-embedded sections) - Anti-PHYH antibody (ab118195)

ab118195, at 1/100 dilution, staining PHYH in formalin-fixed, paraffin-embedded Human breast carcinoma tissue showing cytoplasmic staining, by Immunohistochemistry.

Please note: All products are "FOR RESEARCH USE ONLY. NOT FOR USE IN DIAGNOSTIC PROCEDURES"

Our Abpromise to you: Quality guaranteed and expert technical support

- Replacement or refund for products not performing as stated on the datasheet
- Valid for 12 months from date of delivery
- Response to your inquiry within 24 hours
- We provide support in Chinese, English, French, German, Japanese and Spanish
- Extensive multi-media technical resources to help you
- We investigate all quality concerns to ensure our products perform to the highest standards

If the product does not perform as described on this datasheet, we will offer a refund or replacement. For full details of the Abpromise, please visit <https://www.abcam.cn/abpromise> or contact our technical team.

Terms and conditions

- Guarantee only valid for products bought direct from Abcam or one of our authorized distributors