

Anti-Phosphothreonine-Proline / Phosphoserine-Proline antibody ab9344

11 References [1 图像](#)

概述

产品名称	Anti-Phosphothreonine-Proline / Phosphoserine-Proline抗体
描述	兔多克隆抗体 to Phosphothreonine-Proline / Phosphoserine-Proline
宿主	Rabbit
特异性	This antibody specifically reacts to proteins containing phosphothreonine-proline motifs, it also reacts to the phosphoserine-proline motif to a similar degree (pT-P and pS-P motif). The antibody does not react to phosphothreonine, phosphoserine or phosphotyrosine. The antibody will selectively recognize the phosphothreonine-proline motif of MBP, which is the site of phosphorylation by ERK1/ERK2.
经测试应用	适用于: ELISA, WB
种属反应性	与反应: Species independent
免疫原	Chemical/ Small Molecule corresponding to Phosphothreonine-Proline/ Phosphoserine-Proline conjugated to keyhole limpet haemocyanin.
阳性对照	WB: Phosphorylated MBP
常规说明	

The antigen is based on N-acetyl-pT-K-pY-NH₂. The pT-X-pY sequence is considered to be the motif for some active MAPKs.

The Life Science industry has been in the grips of a reproducibility crisis for a number of years. Abcam is leading the way in addressing this with our range of recombinant monoclonal antibodies and knockout edited cell lines for gold-standard validation. Please check that this product meets your needs before purchasing.

If you have any questions, special requirements or concerns, please send us an inquiry and/or contact our Support team ahead of purchase. Recommended alternatives for this product can be found below, along with publications, customer reviews and Q&As

性能

形式	Liquid
存放说明	Shipped at 4°C. Store at +4°C short term (1-2 weeks). Store at -20°C or -80°C. Avoid freeze / thaw cycle.

存储溶液	pH: 6 Preservative: 0.02% Sodium azide
纯度	Immunogen affinity purified
纯化说明	Immunoaffinity chromatography with phosphothreonine-proline on agarose, then immuno-absorption with threonine-proline-NH2 on agarose.
Primary antibody说明	The antigen is based on N-acetyl-pT-K-pY-NH2. The pT-X-pY sequence is considered to be the motif for some active MAPKs.
克隆	多克隆
同种型	IgG

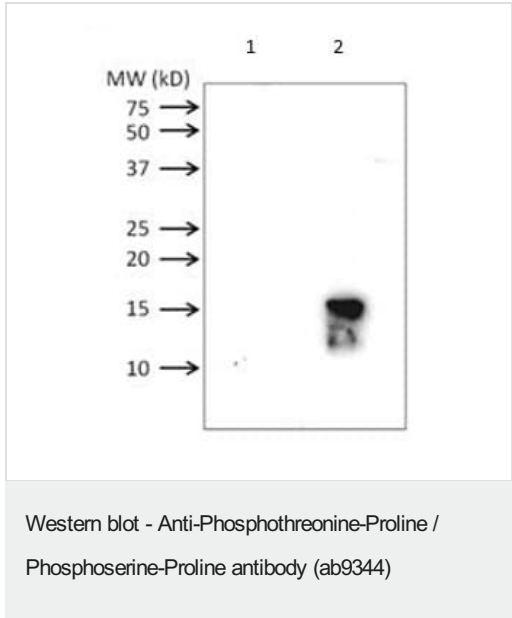
应用

The Abpromise guarantee **Abpromise™**承诺保证使用ab9344于以下的经测试应用

“应用说明”部分 下显示的仅为推荐的起始稀释度;实际最佳的稀释度/浓度应由使用者检定。

应用	Ab评论	说明
ELISA		Use a concentration of 0.5 µg/ml.
WB		Use a concentration of 2 µg/ml.

图片



All lanes : Anti-Phosphothreonine-Proline / Phosphoserine-Proline antibody (ab9344)

Lane 1 : Phosphorprotein protein kinase A PKA

Lane 2 : Myelin Basic Protein (MBP)

Please note: All products are "FOR RESEARCH USE ONLY. NOT FOR USE IN DIAGNOSTIC PROCEDURES"

Our Abpromise to you: Quality guaranteed and expert technical support

- Replacement or refund for products not performing as stated on the datasheet

- Valid for 12 months from date of delivery
- Response to your inquiry within 24 hours
- We provide support in Chinese, English, French, German, Japanese and Spanish
- Extensive multi-media technical resources to help you
- We investigate all quality concerns to ensure our products perform to the highest standards

If the product does not perform as described on this datasheet, we will offer a refund or replacement. For full details of the Abpromise, please visit <https://www.abcam.cn/abpromise> or contact our technical team.

Terms and conditions

- Guarantee only valid for products bought direct from Abcam or one of our authorized distributors