

Anti-Phospholipase D1 antibody [EP1506Y] ab68150

RabMAb

3 References **2 图像**

概述

产品名称	Anti-Phospholipase D1抗体[EP1506Y]
描述	兔单克隆抗体[EP1506Y] to Phospholipase D1
宿主	Rabbit
经测试应用	适用于: WB 不适用于: Flow Cyt, ICC/IF, IHC-P or IP
种属反应性	与反应: Mouse, Rat, Human
免疫原	Synthetic peptide. This information is proprietary to Abcam and/or its suppliers.
阳性对照	WB: HeLa, NIH/3T3 and C6 whole cell lysate.
常规说明	Our RabMAb [®] technology is a patented hybridoma-based technology for making rabbit monoclonal antibodies. For details on our patents, please refer to RabMAb[®] patents . The Life Science industry has been in the grips of a reproducibility crisis for a number of years. Abcam is leading the way in addressing this with our range of recombinant monoclonal antibodies and knockout edited cell lines for gold-standard validation. Please check that this product meets your needs before purchasing. If you have any questions, special requirements or concerns, please send us an inquiry and/or contact our Support team ahead of purchase. Recommended alternatives for this product can be found below, along with publications, customer reviews and Q&As

性能

形式	Liquid
存放说明	Shipped at 4°C. Upon delivery aliquot and store at -20°C. Avoid freeze / thaw cycles.
存储溶液	pH: 7.2 Preservative: 0.01% Sodium azide Constituents: 59% PBS, 40% Glycerol (glycerin, glycerine), 0.5% BSA
纯度	Protein A purified
克隆	单克隆
克隆编号	EP1506Y
同种型	IgG

应用

The Abpromise guarantee **Abpromise™**承诺保证使用ab68150于以下的经测试应用

“应用说明”部分 下显示的仅为推荐的起始稀释度;实际最佳的稀释度/浓度应由使用者检定。

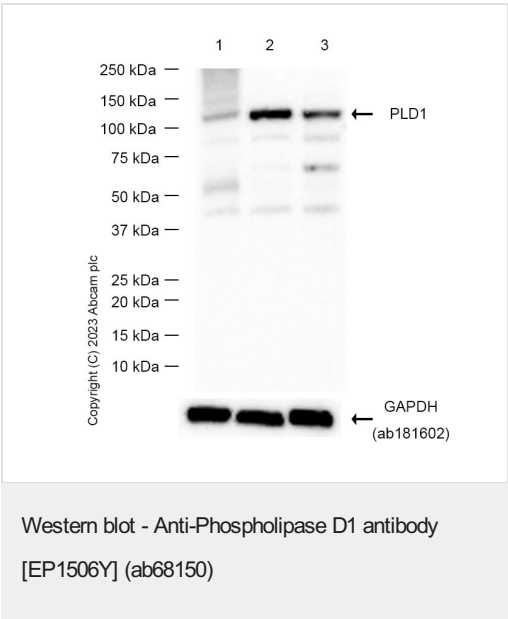
应用	Ab评论	说明
WB		1/500. Detects a band of approximately 120 kDa (predicted molecular weight: 120 kDa).

应用说明 Is unsuitable for Flow Cyt,ICC/IF,IHC-P or IP.

靶标

功能	Implicated as a critical step in numerous cellular pathways, including signal transduction, membrane trafficking, and the regulation of mitosis. May be involved in the regulation of perinuclear intravesicular membrane traffic.
组织特异性	Expressed abundantly in the pancreas and heart and at high levels in brain, placenta, spleen, uterus and small intestine.
序列相似性	Belongs to the phospholipase D family. Contains 1 PH domain. Contains 2 PLD phosphodiesterase domains. Contains 1 PX (phox homology) domain.
细胞定位	Cytoplasm > perinuclear region. Endoplasmic reticulum membrane. Golgi apparatus membrane. Late endosome membrane.

图片



All lanes : Anti-Phospholipase D1 antibody [EP1506Y] (ab68150) at 1/500 dilution

Lane 1 : HeLa (Human cervix adenocarcinoma epithelial cell) (RIPA) whole cell lysate

Lane 2 : NIH/3T3 (Mouse embryonic fibroblast) (RIPA) whole cell lysate

Lane 3 : C6 (Rat glial tumor glial cell) (RIPA) whole cell lysate

Lysates/proteins at 20 µg per lane.

Secondary

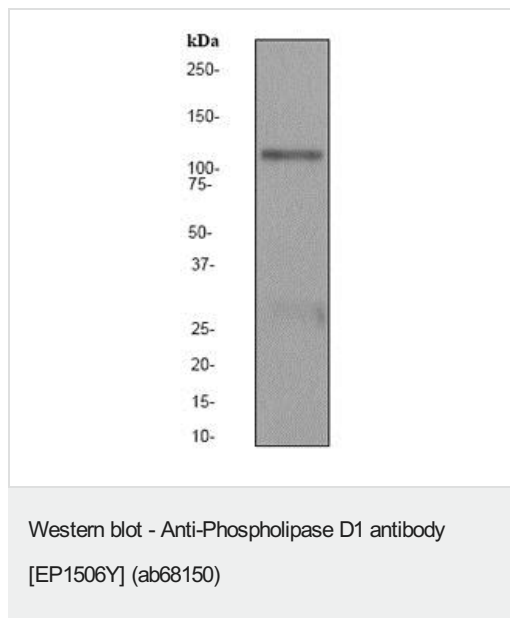
All lanes : Goat Anti-Rabbit IgG H&L (HRP) (**ab97051**) at 1/20000 dilution

Predicted band size: 120 kDa

Observed band size: 120 kDa

Exposure time: 60 seconds

Blocking/Diluting buffer and concentration: 5% NFDM/TBS



Anti-Phospholipase D1 antibody [EP1506Y] (ab68150) at 1/500 dilution + HeLa cell lysate at 10 µg

Secondary

HRP labelled goat anti-rabbit at 1/2000 dilution

Predicted band size: 120 kDa

Observed band size: 120 kDa

Please note: All products are "FOR RESEARCH USE ONLY. NOT FOR USE IN DIAGNOSTIC PROCEDURES"

Our Abpromise to you: Quality guaranteed and expert technical support

- Replacement or refund for products not performing as stated on the datasheet
- Valid for 12 months from date of delivery
- Response to your inquiry within 24 hours
- We provide support in Chinese, English, French, German, Japanese and Spanish
- Extensive multi-media technical resources to help you
- We investigate all quality concerns to ensure our products perform to the highest standards

If the product does not perform as described on this datasheet, we will offer a refund or replacement. For full details of the Abpromise, please visit <https://www.abcam.cn/abpromise> or contact our technical team.

Terms and conditions

- Guarantee only valid for products bought direct from Abcam or one of our authorized distributors