


Anti-Phospholipase C gamma 1/PLC-gamma-1 (phospho Y783) antibody ab4828

★★★★★ [1 Abreviews](#) [1 References](#) [2 图像](#)

概述

产品名称	Anti-Phospholipase C gamma 1/PLC-gamma-1 (phospho Y783)抗体
描述	兔多克隆抗体 to Phospholipase C gamma 1/PLC-gamma-1 (phospho Y783)
宿主	Rabbit
特异性	Phosphorylation site-specific antibody selective for the phosphorylated form of the Phospholipase C gamma 1/PLC-gamma-1 containing a phosphate on tyrosine 783. The antibody has been shown to recognize the endogenous form of Phospholipase C gamma 1/PLC-gamma-1 when phosphorylated on tyrosine 783 in a variety of cell types following treatment by a broad range of extracellular stimuli. Applications include NIH 3T3 cells +/- PDGF. The antibody does not react with a site directed mutant (Y783F).
经测试应用	适用于: IHC-P, WB
种属反应性	与反应: Mouse, Human 预测可用于: Rat, Cow, a wide range of other species 
免疫原	Synthetic peptide corresponding to Human Phospholipase C gamma 1/PLC-gamma-1 (phospho Y783). This region is conserved among many species including mouse, rat, cow and frog.
常规说明	<p>The Life Science industry has been in the grips of a reproducibility crisis for a number of years. Abcam is leading the way in addressing this with our range of recombinant monoclonal antibodies and knockout edited cell lines for gold-standard validation. Please check that this product meets your needs before purchasing.</p> <p>If you have any questions, special requirements or concerns, please send us an inquiry and/or contact our Support team ahead of purchase. Recommended alternatives for this product can be found below, along with publications, customer reviews and Q&As</p>

性能

形式	Liquid
存放说明	Shipped at 4°C. Upon delivery aliquot and store at -20°C or -80°C. Avoid repeated freeze / thaw cycles.
存储溶液	pH: 7.30 Preservative: 0.05% Sodium azide Constituents: PBS, 50% Glycerol, 0.1% BSA

	BSA is IgG and protease free
纯度	Immunogen affinity purified
纯化说明	Purified from rabbit serum by sequential epitope-specific chromatography. The antibody has been negatively preadsorbed using i) a non-phosphopeptide corresponding to the site of phosphorylation to remove antibody that is reactive with nonphosphorylated Phospholipase C gamma 1/PLC-gamma-1 enzymes and (ii) a generic tyrosine phosphorylated peptide to remove antibody that is reactive with phosphotyrosine, irrespective of the sequence. The final product is generated by affinity chromatography using an Phospholipase C gamma 1/PLC-gamma-1 derived peptide that is phosphorylated at tyrosine 783.
克隆	多克隆
同种型	IgG

应用

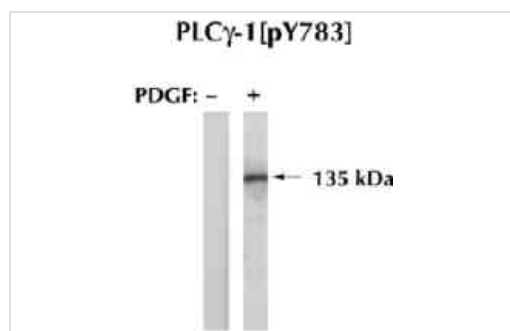
The Abpromise guarantee **Abpromise™** 承诺保证使用ab4828于以下的经测试应用

“应用说明”部分 下显示的仅为推荐的起始稀释度;实际最佳的稀释度/浓度应由使用者检定。

应用	Ab评论	说明
IHC-P		Use at an assay dependent concentration.
WB	★★★★★ (1)	1/1000. Predicted molecular weight: 135 kDa.

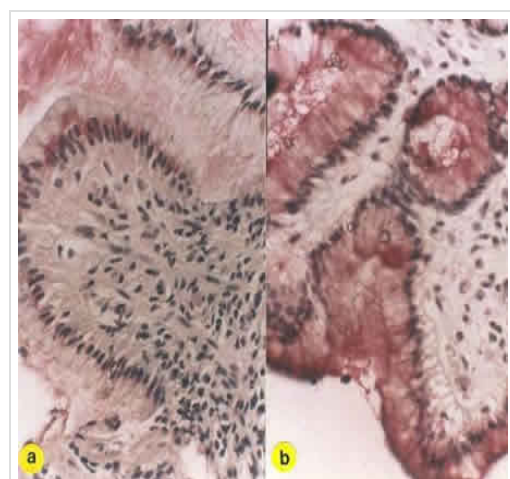
靶标

功能	Plays a role in actin reorganization and cell migration. The production of the second messenger molecules diacylglycerol (DAG) and inositol 1,4,5-trisphosphate (IP3) is mediated by activated phosphatidylinositol-specific phospholipase C enzymes. Major substrate for heparin-binding growth factor 1 (acidic fibroblast growth factor)-activated tyrosine kinase.
序列相似性	Contains 1 C2 domain. Contains 1 EF-hand domain. Contains 2 PH domains. Contains 1 PI-PLC X-box domain. Contains 1 PI-PLC Y-box domain. Contains 2 SH2 domains. Contains 1 SH3 domain.
结构域	The SH3 domain mediates interaction with CLNK (By similarity). The SH3 domain also mediates interaction with RALGPS1.
翻译后修饰	The receptor-mediated activation of PLC-gamma-1 and PLC-gamma-2 involves their phosphorylation by tyrosine kinases in response to ligation of a variety of growth factor receptors and immune system receptors. May be dephosphorylated by PTPRJ. Ubiquitinated by CBLB in activated T-cells.
细胞定位	Cell projection > lamellipodium. Cell projection > ruffle. Rapidly redistributed to ruffles and lamellipodia structures in response to epidermal growth factor (EGF) treatment.



Western blot - Anti-Phospholipase C gamma 1/PLC-gamma-1 (phospho Y783) antibody (ab4828)

Extracts prepared from NIH/3T3 (Mouse embryonic fibroblast cell line) cells exposed to PDGF (10 ng/mL) for 10 minutes were resolved on a 10% Tris-glycine gel and transferred to nitrocellulose. Membranes were blocked with 1% BSA, followed by incubation with 0.5 µg/mL ab4828 antibody. After washing, membranes were incubated with goat F(ab')₂ anti-rabbit IgG alkaline phosphatase and the signal was detected by chemiluminescence using the Tropix WesternStar detection method and Kodak BioMax ultraclear film. The data show that PDGF is a strong inducer of Phospholipase C gamma 1/PLC-gamma-1 phosphorylation on Y783 in NIH3T3 cells. Extracts prepared from NIH-3T3 cells exposed to PDGF (10 ng/mL) for 10 minutes were resolved on a 10% Tris-glycine gel and transferred to nitrocellulose. Membranes were blocked with 1% BSA, followed by incubation with 0.5 µg/mL ab4828 antibody. After washing, membranes were incubated with goat F(ab')₂ anti-rabbit IgG alkaline phosphatase and the signal was detected by chemiluminescence using the Tropix



Immunohistochemistry (Formalin/PFA-fixed paraffin-embedded sections) - Anti-Phospholipase C gamma 1/PLC-gamma-1 (phospho Y783) antibody (ab4828)

ab5163 at a dilution of 1/1000 staining Phospholipase C gamma 1/PLC-gamma-1 (phospho Y783) in formalin fixed paraffin embedded sections of a) inflamed human gastric epithelium and b) normal human gastric epithelium by immunohistochemistry.

Please note: All products are "FOR RESEARCH USE ONLY. NOT FOR USE IN DIAGNOSTIC PROCEDURES"

Our Promise to you: Quality guaranteed and expert technical support

- Replacement or refund for products not performing as stated on the datasheet
- Valid for 12 months from date of delivery
- Response to your inquiry within 24 hours

- We provide support in Chinese, English, French, German, Japanese and Spanish
- Extensive multi-media technical resources to help you
- We investigate all quality concerns to ensure our products perform to the highest standards

If the product does not perform as described on this datasheet, we will offer a refund or replacement. For full details of the Abpromise, please visit <https://www.abcam.cn/abpromise> or contact our technical team.

Terms and conditions

- Guarantee only valid for products bought direct from Abcam or one of our authorized distributors