

# Anti-Phospholipase C beta 3/PLCB3 antibody [EPR5951] ab124735

敲除验证 重组 RabMAb

## 5 图像

### 概述

产品名称	Anti-Phospholipase C beta 3/PLCB3抗体[EPR5951]
描述	兔单克隆抗体[EPR5951] to Phospholipase C beta 3/PLCB3
宿主	Rabbit
经测试应用	适用于: WB, IHC-P 不适用于: Flow Cyt, ICC/IF or IP
种属反应性	与反应: Human
免疫原	Synthetic peptide. This information is proprietary to Abcam and/or its suppliers.
阳性对照	HCT 116, 293T, and A431, HeLa cell lysates; Human breast and colon tissues.
常规说明	This product is a recombinant monoclonal antibody, which offers several advantages including: - High batch-to-batch consistency and reproducibility - Improved sensitivity and specificity - Long-term security of supply - Animal-free production For more information <a href="#">see here</a> . Our RabMAb <sup>®</sup> technology is a patented hybridoma-based technology for making rabbit monoclonal antibodies. For details on our patents, please refer to <a href="#">RabMAb<sup>®</sup> patents</a> . Mouse, Rat: We have preliminary internal testing data to indicate this antibody may not react with these species. Please contact us for more information.

### 性能

形式	Liquid
存放说明	Shipped at 4°C. Store at -20°C. Stable for 12 months at -20°C.
存储溶液	pH: 7.20 Preservative: 0.05% Sodium azide Constituents: 40% Glycerol (glycerin, glycerine), 9.85% Tris glycine, 50% Tissue culture supernatant
纯度	Protein A purified

克隆 单克隆  
克隆编号 EPR5951  
同种型 IgG

## 应用

**The Abpromise guarantee** **Abpromise™**承诺保证使用ab124735于以下的经测试应用

“应用说明”部分 下显示的仅为推荐的起始稀释度;实际最佳的稀释度/浓度应由使用者检定。

应用	Ab评论	说明
WB		1/1000 - 1/10000. Detects a band of approximately 150 kDa (predicted molecular weight: 139 kDa).
IHC-P		1/100 - 1/250. Perform heat mediated antigen retrieval before commencing with IHC staining protocol. Heat up to 98 degrees C, below boiling, and then let cool for 10-20 min.

应用说明 Is unsuitable for Flow Cyt, ICC/IF or IP.

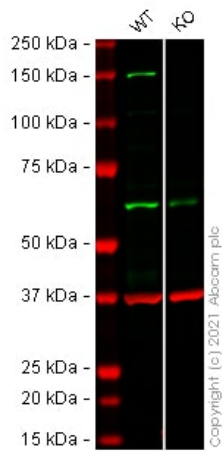
## 靶标

功能 The production of the second messenger molecules diacylglycerol (DAG) and inositol 1,4,5-trisphosphate (IP3) is mediated by activated phosphatidylinositol-specific phospholipase C enzymes.

序列相似性 Contains 1 C2 domain.  
Contains 1 PI-PLC X-box domain.  
Contains 1 PI-PLC Y-box domain.

细胞定位 Membrane.

## 图片



Western blot - Anti-Phospholipase C beta 3/PLCB3 antibody [EPR5951] (ab124735)

**All lanes :** Anti-Phospholipase C beta 3/PLCB3 antibody [EPR5951] (ab124735) at 1/1000 dilution

**Lane 1 :** Wild-type HeLa (Human epithelial cell line from cervix adenocarcinoma) whole cell lysate

**Lane 2 :** PLCB3 knockout HeLa (Human epithelial cell line from cervix adenocarcinoma) whole cell lysate

Lysates/proteins at 20 µg per lane.

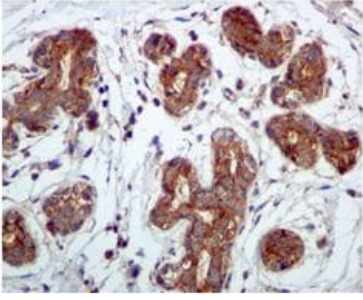
Performed under reducing conditions.

**Predicted band size:** 139 kDa

**Observed band size:** 150 kDa

**Lanes 1 - 2:** Merged signal (red and green). Green - ab124735 observed at 150 kDa. Red - loading control **ab8245** (Mouse anti-GAPDH antibody [6C5]) observed at 37 kDa.

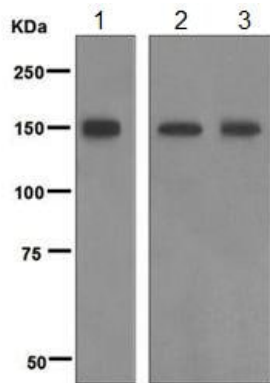
ab124735 was shown to react with Phospholipase C beta 3/PLCB3 in wild-type HeLa cells in Western blot with loss of signal observed in PLCB3 knockout cell line **ab266034** (PLCB3 knockout cell lysate **ab258122**). Wild-type HeLa and PLCB3 knockout cell lysates were subjected to SDS-PAGE. Membranes were blocked in 3 % milk in TBS-T (0.1 % Tween<sup>®</sup>) before incubation with ab124735 and **ab8245** (Mouse anti-GAPDH antibody [6C5]) overnight at 4 °C at a 1 in 1000 dilution and a 1 in 20000 dilution respectively. Blots were incubated with Goat anti-Rabbit IgG H&L (IRDye<sup>®</sup> 800CW) preabsorbed (**ab216773**) and Goat anti-Mouse IgG H&L (IRDye<sup>®</sup> 680RD) preabsorbed (**ab216776**) secondary antibodies at 1 in 20000 dilution for 1 h at room temperature before imaging.



Immunohistochemistry (Formalin/PFA-fixed paraffin-embedded sections) - Anti-Phospholipase C beta 3/PLCB3 antibody [EPR5951] (ab124735)

ab124735 at 1/100 dilution staining Phospholipase C beta 3/PLCB3 in paraffin-embedded Human breast tissue by Immunohistochemistry.

Perform heat mediated antigen retrieval before commencing with IHC staining protocol.



Western blot - Anti-Phospholipase C beta 3/PLCB3 antibody [EPR5951] (ab124735)

**All lanes** : Anti-Phospholipase C beta 3/PLCB3 antibody [EPR5951] (ab124735) at 1/1000 dilution

**Lane 1** : HCT 116 cell lysate

**Lane 2** : 293T (Human embryonic kidney epithelial cell) cell lysate

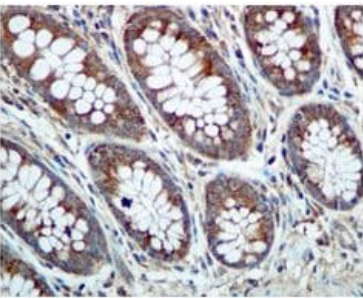
**Lane 3** : A431 cell lysate

Lysates/proteins at 10 µg per lane.

#### Secondary

**All lanes** : Goat anti-Rabbit HRP at 1/2000 dilution

**Predicted band size:** 139 kDa



Immunohistochemistry (Formalin/PFA-fixed paraffin-embedded sections) - Anti-Phospholipase C beta 3/PLCB3 antibody [EPR5951] (ab124735)

ab124735 at 1/100 dilution staining Phospholipase C beta 3/PLCB3 in paraffin-embedded Human colon tissue by Immunohistochemistry.

Perform heat mediated antigen retrieval before commencing with IHC staining protocol.

### Why choose a recombinant antibody?



**Research with confidence**  
Consistent and reproducible results



**Long-term and scalable supply**  
Recombinant technology



**Success from the first experiment**  
Confirmed specificity



**Ethical standards compliant**  
Animal-free production

Anti-Phospholipase C beta 3/PLCB3 antibody  
[EPR5951] (ab124735)

**Please note:** All products are "FOR RESEARCH USE ONLY. NOT FOR USE IN DIAGNOSTIC PROCEDURES"

### Our Abpromise to you: Quality guaranteed and expert technical support

---

- Replacement or refund for products not performing as stated on the datasheet
- Valid for 12 months from date of delivery
- Response to your inquiry within 24 hours
- We provide support in Chinese, English, French, German, Japanese and Spanish
- Extensive multi-media technical resources to help you
- We investigate all quality concerns to ensure our products perform to the highest standards

If the product does not perform as described on this datasheet, we will offer a refund or replacement. For full details of the Abpromise, please visit <https://www.abcam.cn/abpromise> or contact our technical team.

### Terms and conditions

---

- Guarantee only valid for products bought direct from Abcam or one of our authorized distributors