

Anti-Phospholamban antibody ab86930

[7 References](#) [2 图像](#)

概述

产品名称	Anti-Phospholamban抗体
描述	兔多克隆抗体to Phospholamban
宿主	Rabbit
经测试应用	适用于: WB
种属反应性	与反应: Mouse, Rat, Human
免疫原	Synthetic peptide corresponding to Human Phospholamban aa 2-16 (N terminal). Sequence: EKVQYLTRSAIRRAS Database link: P26678 Run BLAST with Run BLAST with
阳性对照	WB: Rat heart tissue lysate. CEM, MCF-7, HT1080, and HeLa cell lysates
常规说明	<p>The Life Science industry has been in the grips of a reproducibility crisis for a number of years. Abcam is leading the way in addressing this with our range of recombinant monoclonal antibodies and knockout edited cell lines for gold-standard validation. Please check that this product meets your needs before purchasing.</p> <p>If you have any questions, special requirements or concerns, please send us an inquiry and/or contact our Support team ahead of purchase. Recommended alternatives for this product can be found below, along with publications, customer reviews and Q&As</p>

性能

形式	Liquid
存放说明	Shipped at 4°C. Upon delivery aliquot and store at -20°C. Avoid repeated freeze / thaw cycles.
存储溶液	Preservatives: 0.025% Sodium azide, 0.025% Thimerosal (merthiolate) Constituents: 2.5% BSA, 0.45% Sodium chloride, 0.1% Dibasic monohydrogen sodium phosphate
纯度	Immunogen affinity purified
克隆	多克隆
同种型	IgG

应用

The Abpromise guarantee **Abpromise™**承诺保证使用ab86930于以下的经测试应用

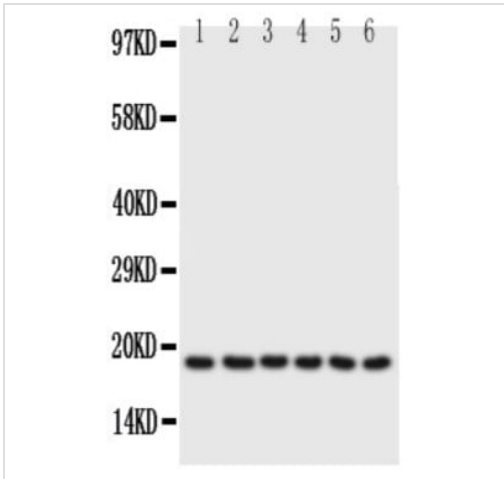
“应用说明”部分 下显示的仅为推荐的起始稀释度;实际最佳的稀释度/浓度应由使用者检定。

应用	Ab评论	说明
WB		Use a concentration of 1 µg/ml. Predicted molecular weight: 6 kDa.

靶标

功能	Reversibly inhibits the activity of ATP2A2 in cardiac sarcoplasmic reticulum by decreasing the apparent affinity of the ATPase for Ca(2+). Modulates the contractility of the heart muscle in response to physiological stimuli via its effects on ATP2A2. Modulates calcium re-uptake during muscle relaxation and plays an important role in calcium homeostasis in the heart muscle. The degree of ATP2A2 inhibition depends on the oligomeric state of PLN. ATP2A2 inhibition is alleviated by PLN phosphorylation.
组织特异性	Heart muscle (at protein level).
疾病相关	Cardiomyopathy, dilated 1P Cardiomyopathy, familial hypertrophic 18
序列相似性	Belongs to the phospholamban family.
翻译后修饰	Phosphorylation by PKA abolishes the inhibition of ATP2A2-mediated calcium uptake. Phosphorylated at Thr-17 by CaMK2, and in response to beta-adrenergic stimulation. Phosphorylation by DMPK may stimulate sarcoplasmic reticulum calcium uptake in cardiomyocytes.
细胞定位	Endoplasmic reticulum membrane. Sarcoplasmic reticulum membrane. Mitochondrion membrane. Membrane. Colocalizes with HAX1 at the endoplasmic reticulum (PubMed:17241641). Colocalizes with DMPK a the sarcoplasmic reticulum (PubMed:15598648).

图片



Western blot - Anti-Phospholamban antibody (ab86930)

All lanes : Anti-Phospholamban antibody (ab86930) at 0.5 µg/ml

Lanes 1-2 : Rat Heart Tissue Lysate at 50 µg

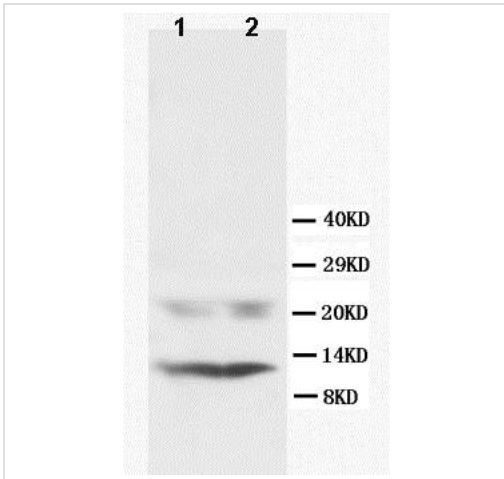
Lane 3 : CEM Whole Cell Lysate at 40 µg

Lane 4 : MCF-7 Whole Cell Lysate at 40 µg

Lane 5 : HT1080 Whole Cell Lysate at 40 µg

Lane 6 : HeLa Whole Cell Lysate at 40 µg

Predicted band size: 6 kDa



Western blot - Anti-Phospholamban antibody (ab86930)

All lanes : Anti-Phospholamban antibody (ab86930) at 1 µg/ml

All lanes : Rat heart tissue lysate

Predicted band size: 6 kDa

Observed band size: 11 kDa

Please note: All products are "FOR RESEARCH USE ONLY. NOT FOR USE IN DIAGNOSTIC PROCEDURES"

Our Abpromise to you: Quality guaranteed and expert technical support

- Replacement or refund for products not performing as stated on the datasheet
- Valid for 12 months from date of delivery
- Response to your inquiry within 24 hours
- We provide support in Chinese, English, French, German, Japanese and Spanish
- Extensive multi-media technical resources to help you
- We investigate all quality concerns to ensure our products perform to the highest standards

If the product does not perform as described on this datasheet, we will offer a refund or replacement. For full details of the Abpromise, please visit <https://www.abcam.cn/abpromise> or contact our technical team.

Terms and conditions

- Guarantee only valid for products bought direct from Abcam or one of our authorized distributors