


Anti-PHD finger protein 1/PHF1 antibody ab80042

5 References 2 图像

概述	
产品名称	Anti-PHD finger蛋白1/PHF1抗体
描述	兔多克隆抗体to PHD finger蛋白1/PHF1
宿主	Rabbit
特异性	<p>This antibody is specific to PHD finger protein 1. From Jan 2024, QC testing of replenishment batches of this polyclonal changed. All tested and expected application and reactive species combinations are still covered by our Abcam product promise. However, we no longer test all applications. For more information on a specific batch, please contact our Scientific Support who will be happy to help. You may also be interested in our alternative recombinant antibody, ab184951.</p>
经测试应用	适用于: WB, ICC/IF
种属反应性	<p>与反应: Human</p> <p>预测可用于: Mouse, Rat, Cow, Cynomolgus monkey, Macaque monkey </p>
免疫原	Synthetic peptide. This information is proprietary to Abcam and/or its suppliers.
阳性对照	This antibody gave a positive signal in Human Heart Tissue Lysate.
常规说明	<p>The Life Science industry has been in the grips of a reproducibility crisis for a number of years. Abcam is leading the way in addressing this with our range of recombinant monoclonal antibodies and knockout edited cell lines for gold-standard validation. Please check that this product meets your needs before purchasing.</p> <p>If you have any questions, special requirements or concerns, please send us an inquiry and/or contact our Support team ahead of purchase. Recommended alternatives for this product can be found below, along with publications, customer reviews and Q&As</p>
性能	
形式	Liquid
存放说明	Shipped at 4°C. Store at +4°C short term (1-2 weeks). Upon delivery aliquot. Store at -20°C or -80°C. Avoid freeze / thaw cycle.
存储溶液	<p>pH: 7.40</p> <p>Preservative: 0.02% Sodium azide</p> <p>Constituent: PBS</p>

Batches of this product that have a concentration < 1mg/ml may have BSA added as a stabilising agent. If you would like information about the formulation of a specific lot, please contact our scientific support team who will be happy to help.

纯度	Immunogen affinity purified
克隆	多克隆
同种型	IgG

应用

The Abpromise guarantee Abpromise™ 承诺保证使用ab80042于以下的经测试应用

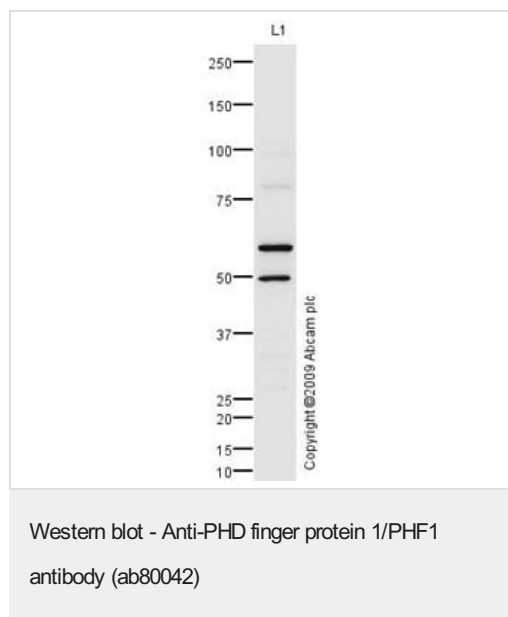
“应用说明”部分 下显示的仅为推荐的起始稀释度;实际最佳的稀释度/浓度应由使用者检定。

应用	Ab评论	说明
WB		Use a concentration of 1 µg/ml. Detects a band of approximately 62 kDa (predicted molecular weight: 62 kDa).
ICC/IF		Use a concentration of 1 µg/ml.

靶标

功能	Transcriptional repressor. May promote methylation of histone H3 on 'Lys-27' by the PRC2/EED-EZH2 complex.
组织特异性	Highest levels in heart, skeletal muscle, and pancreas, lower levels in brain, placenta, lung, liver and kidney.
序列相似性	Contains 2 PHD-type zinc fingers.
细胞定位	Nucleus. Localizes specifically to the promoters of numerous target genes.

图片



Anti-PHD finger protein 1/PHF1 antibody (ab80042) at 1 µg/ml +
Human heart tissue lysate - total protein ([ab29431](#)) at 10 µg

Secondary

Goat polyclonal to Rabbit IgG - H&L - Pre-Adsorbed (HRP) at
1/3000 dilution

Developed using the ECL technique.

Performed under reducing conditions.

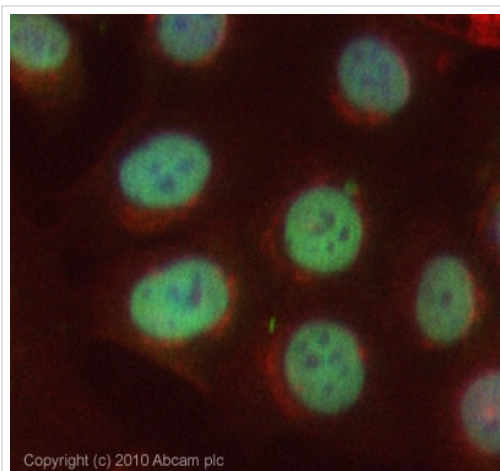
Predicted band size: 62 kDa

Observed band size: 62 kDa

Additional bands at: 50 kDa (possible isoform)

Exposure time: 3 minutes

This antibody is predicted to cross react with both isoform 1 (50-kDa) and isoform 2 (62-kDa) of PHF1. We believe that the band observed at 50-kDa corresponds to isoform 1.



Immunocytochemistry/ Immunofluorescence - Anti-PHD finger protein 1/PHF1 antibody (ab80042)

ICC/IF image of ab80042 stained MCF-7 cells. The cells were 4% PFA fixed (10 min) and then incubated in 1%BSA / 10% normal Goat serum / 0.3M glycine in 0.1% PBS-Tween for 1h to permeabilise the cells and block non-specific protein-protein interactions. The cells were then incubated with the antibody (ab80042, 1µg/ml) overnight at +4°C. The secondary antibody (green) was Alexa Fluor® 488 Goat anti-Rabbit IgG (H+L) used at a 1/1000 dilution for 1h. Alexa Fluor® 594 WGA was used to label plasma membranes (red) at a 1/200 dilution for 1h. DAPI was used to stain the cell nuclei (blue) at a concentration of 1.43µM. This antibody also gave a positive result in 100% Methanol fixed (5 min) HeLa cells at 1µg/ml.

Please note: All products are "FOR RESEARCH USE ONLY. NOT FOR USE IN DIAGNOSTIC PROCEDURES"

Our Abpromise to you: Quality guaranteed and expert technical support

- Replacement or refund for products not performing as stated on the datasheet
- Valid for 12 months from date of delivery
- Response to your inquiry within 24 hours
- We provide support in Chinese, English, French, German, Japanese and Spanish
- Extensive multi-media technical resources to help you
- We investigate all quality concerns to ensure our products perform to the highest standards

If the product does not perform as described on this datasheet, we will offer a refund or replacement. For full details of the Abpromise, please visit <https://www.abcam.cn/abpromise> or contact our technical team.

Terms and conditions

- Guarantee only valid for products bought direct from Abcam or one of our authorized distributors