




### Anti-PGRMC1 antibody ab224054

#### 9 图像

#### 概述

产品名称	Anti-PGRMC1抗体
描述	兔多克隆抗体to PGRMC1
宿主	Rabbit
经测试应用	适用于: WB, IHC-P
种属反应性	与反应: Mouse, Rat, Human 预测可用于: Cow, Pig, Orangutan 
免疫原	Recombinant fragment corresponding to Human PGRMC1 aa 1-150. Database link: <a href="#">O00264</a>  <a href="#">Run BLAST with</a>  <a href="#">Run BLAST with</a>
阳性对照	IHC-P: Human liver, kidney, endometrium, hippocampus tissue and breast cancer tissue. WB: NIH/3T3, NBT-II and HEK-293 cell lysate. Human liver tissue.
常规说明	<p>The Life Science industry has been in the grips of a reproducibility crisis for a number of years. Abcam is leading the way in addressing this with our range of recombinant monoclonal antibodies and knockout edited cell lines for gold-standard validation. Please check that this product meets your needs before purchasing.</p> <p>If you have any questions, special requirements or concerns, please send us an inquiry and/or contact our Support team ahead of purchase. Recommended alternatives for this product can be found below, along with publications, customer reviews and Q&amp;As</p>

#### 性能

形式	Liquid
存放说明	Shipped at 4°C. Store at +4°C short term (1-2 weeks). Upon delivery aliquot. Store at -20°C long term. Avoid freeze / thaw cycle.
存储溶液	pH: 7.20 Preservative: 0.02% Sodium azide Constituents: 40% Glycerol (glycerin, glycerine), PBS
纯度	Immunogen affinity purified
克隆	多克隆
同种型	IgG

应用

**The Abpromise guarantee**      **Abpromise™**承诺保证使用ab224054于以下的经测试应用

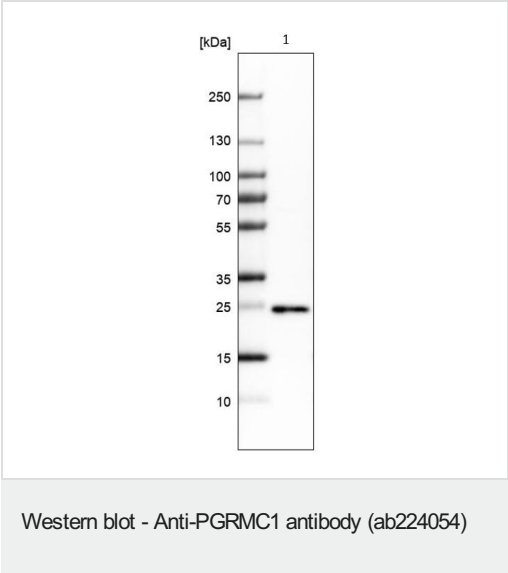
“应用说明”部分 下显示的仅为推荐的起始稀释度;实际最佳的稀释度/浓度应由使用者检定。

应用	Ab评论	说明
WB		Use a concentration of 0.04 - 0.4 µg/ml. Predicted molecular weight: 22 kDa.
IHC-P		1/500 - 1/1000. Perform heat mediated antigen retrieval with citrate buffer pH 6 before commencing with IHC staining protocol.

靶标

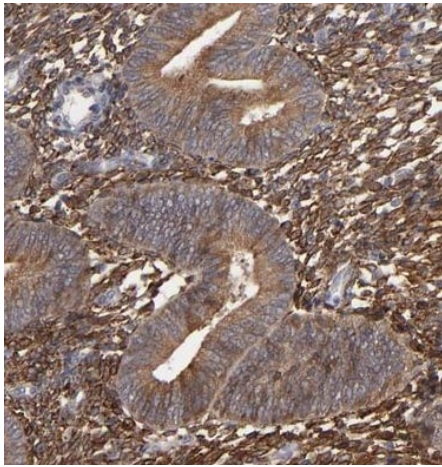
功能	Receptor for progesterone.
组织特异性	Widely expressed, with highest expression in liver and kidney.
序列相似性	Belongs to the cytochrome b5 family. MAPR subfamily. Contains 1 cytochrome b5 heme-binding domain.
结构域	The cytochrome b5 heme-binding domain lacks the conserved iron-binding His residues at positions 107 and 131.
细胞定位	Microsome membrane. Endoplasmic reticulum membrane.

图片



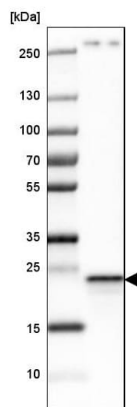
Anti-PGRMC1 antibody (ab224054) + Human Liver tissue

**Predicted band size:** 22 kDa



Paraffin embedded human endometrium tissue stained for PGRMC1 with ab224054 (1/500 dilution) in immunohistochemical analysis.

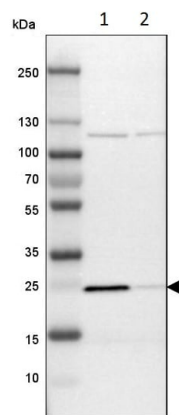
Immunohistochemistry (Formalin/PFA-fixed paraffin-embedded sections) - Anti-PGRMC1 antibody (ab224054)



Anti-PGRMC1 antibody (ab224054) at 1/100 dilution + HEK-293 (human epithelial cell line from embryonic kidney) cell lysate

**Predicted band size: 22 kDa**

Western blot - Anti-PGRMC1 antibody (ab224054)



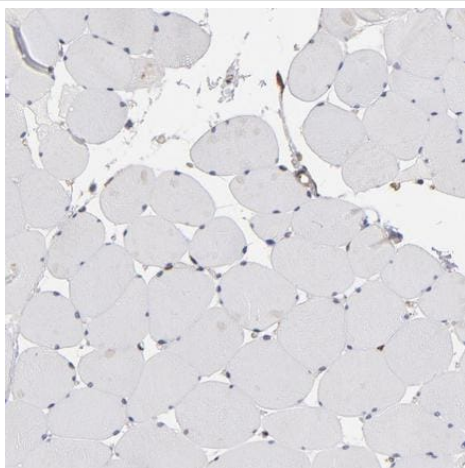
Western blot - Anti-PGRMC1 antibody (ab224054)

**All lanes :** Anti-PGRMC1 antibody (ab224054) at 1/100 dilution

**Lane 1 :** NIH/3T3 (mouse embryo fibroblast cell line) cell lysate

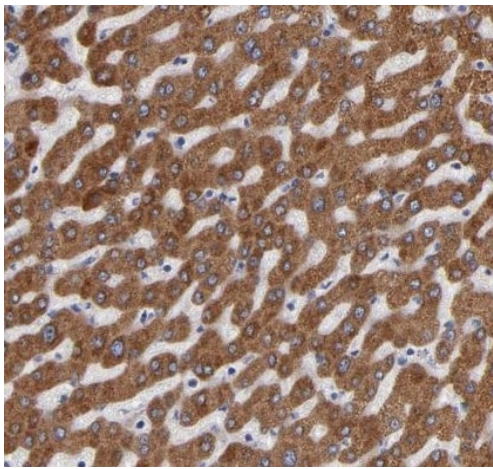
**Lane 2 :** NBT-II (rat cell line) cell lysate

**Predicted band size:** 22 kDa



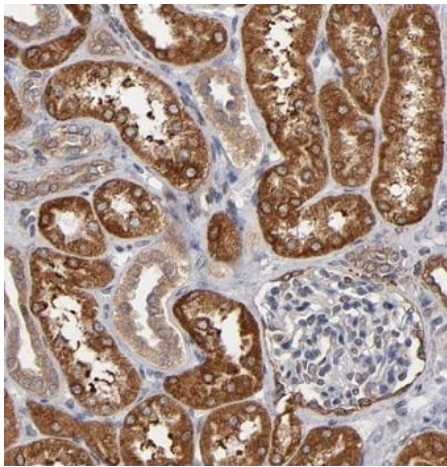
Immunohistochemistry (Formalin/PFA-fixed paraffin-embedded sections) - Anti-PGRMC1 antibody (ab224054)

**Negative control:** Paraffin embedded human skeletal tissue stained for PGRMC1 with ab224054 (1/500 dilution) in immunohistochemical analysis.



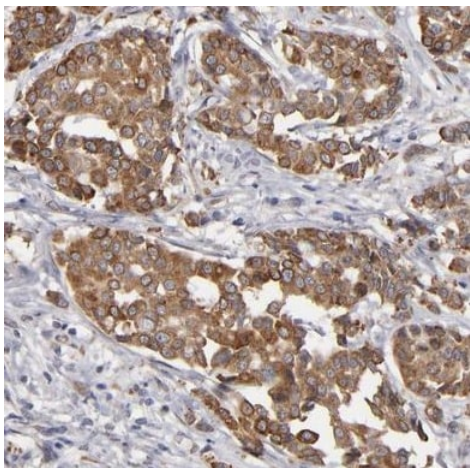
Immunohistochemistry (Formalin/PFA-fixed paraffin-embedded sections) - Anti-PGRMC1 antibody (ab224054)

Paraffin embedded human liver tissue stained for PGRMC1 with ab224054 (1/500 dilution) in immunohistochemical analysis.



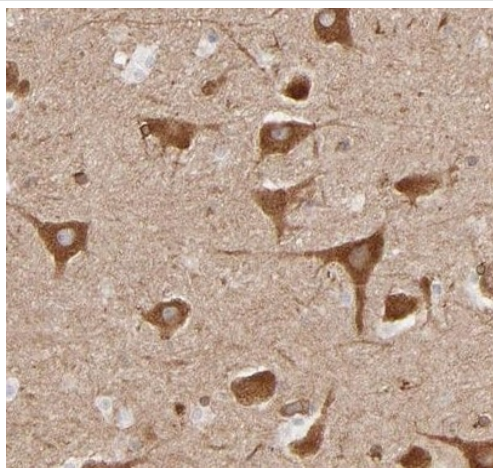
Immunohistochemistry (Formalin/PFA-fixed paraffin-embedded sections) - Anti-PGRMC1 antibody (ab224054)

Paraffin embedded human kidney tissue stained for PGRMC1 with ab224054 (1/500 dilution) in immunohistochemical analysis.



Paraffin embedded human breast cancer tissue stained for PGRMC1 with ab224054 (1/500 dilution) in immunohistochemical analysis.

Immunohistochemistry (Formalin/PFA-fixed paraffin-embedded sections) - Anti-PGRMC1 antibody (ab224054)



Paraffin embedded human hippocampus tissue stained for PGRMC1 with ab224054 (1/500 dilution) in immunohistochemical analysis.

Immunohistochemistry (Formalin/PFA-fixed paraffin-embedded sections) - Anti-PGRMC1 antibody (ab224054)

**Please note:** All products are "FOR RESEARCH USE ONLY. NOT FOR USE IN DIAGNOSTIC PROCEDURES"

#### Our Abpromise to you: Quality guaranteed and expert technical support

- Replacement or refund for products not performing as stated on the datasheet

- Valid for 12 months from date of delivery
- Response to your inquiry within 24 hours
- We provide support in Chinese, English, French, German, Japanese and Spanish
- Extensive multi-media technical resources to help you
- We investigate all quality concerns to ensure our products perform to the highest standards

If the product does not perform as described on this datasheet, we will offer a refund or replacement. For full details of the Abpromise, please visit <https://www.abcam.cn/abpromise> or contact our technical team.

## **Terms and conditions**

---

- Guarantee only valid for products bought direct from Abcam or one of our authorized distributors