




### Anti-PGLS antibody ab229872

#### 4 图像

#### 概述

<b>产品名称</b>	Anti-PGLS抗体
<b>描述</b>	兔多克隆抗体to PGLS
<b>宿主</b>	Rabbit
<b>经测试应用</b>	<b>适用于:</b> WB, IP, IHC-P
<b>种属反应性</b>	<b>与反应:</b> Mouse, Human <b>预测可用于:</b> Cow 
<b>免疫原</b>	Recombinant full length protein corresponding to Human PGLS aa 1 to the C-terminus. Database link: <a href="#">O95336</a> <div style="text-align: right;">  <a href="#">Run BLAST with</a>  <a href="#">Run BLAST with</a> </div>
<b>阳性对照</b>	WB: Mouse heart, brain and liver tissue lysates. U251, THP-1, HepG2 and HeLa whole cell lysates. IHC-P: Human thyroid and tonsil tissues. IP: PGLS in U251 whole cell lysates.
<b>常规说明</b>	<p>The Life Science industry has been in the grips of a reproducibility crisis for a number of years. Abcam is leading the way in addressing this with our range of recombinant monoclonal antibodies and knockout edited cell lines for gold-standard validation. Please check that this product meets your needs before purchasing.</p> <p>If you have any questions, special requirements or concerns, please send us an inquiry and/or contact our Support team ahead of purchase. Recommended alternatives for this product can be found below, along with publications, customer reviews and Q&amp;As</p>

#### 性能

<b>形式</b>	Liquid
<b>存放说明</b>	Shipped at 4°C. Store at +4°C short term (1-2 weeks). Upon delivery aliquot. Store at -20°C long term. Avoid freeze / thaw cycle.
<b>存储溶液</b>	pH: 7.30 Preservative: 0.02% Sodium azide Constituents: PBS, 50% Glycerol (glycerin, glycerine)
<b>纯度</b>	Immunogen affinity purified
<b>克隆</b>	多克隆
<b>同种型</b>	IgG

## 应用

**The Abpromise guarantee**      **Abpromise™** 承诺保证使用 ab229872 于以下的经测试应用

“应用说明”部分 下显示的仅为推荐的起始稀释度;实际最佳的稀释度/浓度应由使用者检定。

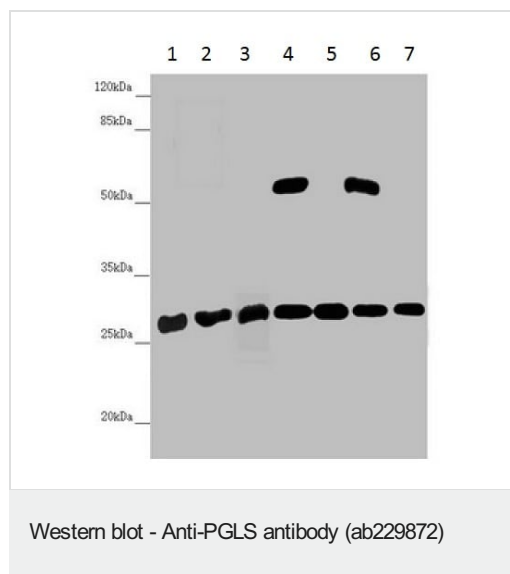
应用	Ab评论	说明
WB		1/1000 - 1/5000. Detects a band of approximately 28, 52 kDa (predicted molecular weight: 28 kDa).
IP		1/200 - 1/2000.
IHC-P		1/20 - 1/200.

## 靶标

**相关性**      PGLS belongs to the glucosamine/galactosamine-6-phosphate isomerase family, 6-phosphogluconolactonase subfamily. It is implicated in the hydrolysis of 6-phosphogluconolactone to 6-phosphogluconate.

**细胞定位**      Cytoplasmic

## 图片



**All lanes** : Anti-PGLS antibody (ab229872) at 1/1000 dilution

**Lane 1** : Mouse heart tissue lysate

**Lane 2** : Mouse liver tissue lysate

**Lane 3** : Mouse brain tissue lysate

**Lane 4** : U251 whole cell lysate

**Lane 5** : THP-1 (Human monocytic leukemia cell line) whole cell lysate

**Lane 6** : HepG2 (Human liver hepatocellular carcinoma cell line) whole cell lysate

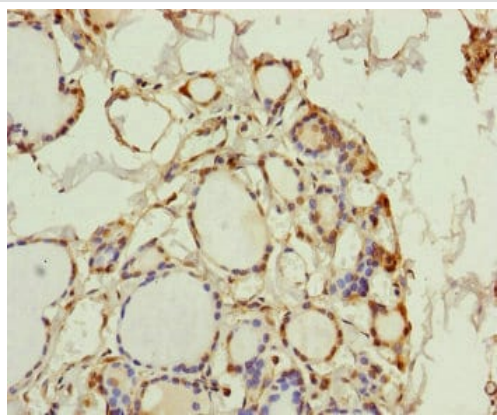
**Lane 7** : HeLa (Human epithelial cell line from cervix adenocarcinoma) whole cell lysate

### Secondary

**All lanes** : Goat polyclonal to rabbit IgG at 1/10000 dilution

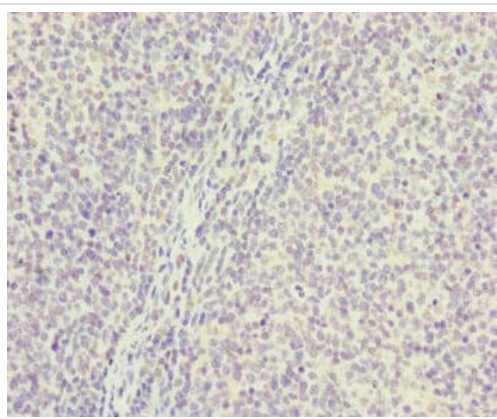
Developed using the ECL technique.

**Predicted band size:** 28 kDa



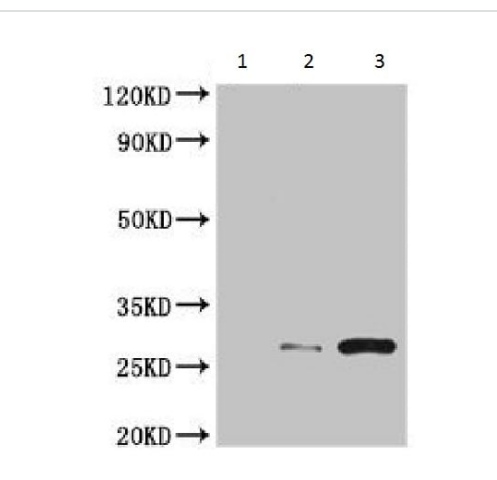
Immunohistochemistry (Formalin/PFA-fixed paraffin-embedded sections) - Anti-PGLS antibody (ab229872)

Paraffin-embedded human thyroid tissue stained for PGLS with ab229872 at a 1/100 dilution in immunohistochemical analysis.



Immunohistochemistry (Formalin/PFA-fixed paraffin-embedded sections) - Anti-PGLS antibody (ab229872)

Paraffin-embedded human tonsil tissue stained for PGLS with ab229872 at a 1/100 dilution in immunohistochemical analysis.



Immunoprecipitation - Anti-PGLS antibody (ab229872)

PGLS was immunoprecipitated from 500 µg U251 whole cell extracts using 4 µg of ab229872.

**Lane 1:** Control IgG IP in U251 whole cell extracts.

**Lane 2:** ab229872 in U251 whole cell extracts.

**Lane 3:** PGLS in U251 whole cell extracts (Input).

For WB an HRP-conjugated light chain specific antibody was used as the secondary antibody (1/50000).

**Please note:** All products are "FOR RESEARCH USE ONLY. NOT FOR USE IN DIAGNOSTIC PROCEDURES"

### **Our Abpromise to you: Quality guaranteed and expert technical support**

---

- Replacement or refund for products not performing as stated on the datasheet
- Valid for 12 months from date of delivery
- Response to your inquiry within 24 hours
  
- We provide support in Chinese, English, French, German, Japanese and Spanish
- Extensive multi-media technical resources to help you
- We investigate all quality concerns to ensure our products perform to the highest standards

If the product does not perform as described on this datasheet, we will offer a refund or replacement. For full details of the Abpromise, please visit <https://www.abcam.cn/abpromise> or contact our technical team.

### **Terms and conditions**

---

- Guarantee only valid for products bought direct from Abcam or one of our authorized distributors