


Anti-PGAM2 antibody ab97800

[3 References](#) [2 图像](#)

概述

产品名称	Anti-PGAM2抗体
描述	兔多克隆抗体to PGAM2
宿主	Rabbit
特异性	The immunogen sequence shows 81% homology with PGAM1, so cross-reactivity with PGAM1 cannot be excluded. However, cross-reactivity has not been tested.
经测试应用	适用于: WB, ICC/IF
种属反应性	与反应: Human 预测可用于: Mouse, Rat, Cow, Pig 
免疫原	Recombinant fragment, corresponding to a region within amino acids 1-203 of Human PGAM2 (NP_000281)
阳性对照	H1299 or HeLa lysates A549 cells (IF)
常规说明	<p>The Life Science industry has been in the grips of a reproducibility crisis for a number of years. Abcam is leading the way in addressing this with our range of recombinant monoclonal antibodies and knockout edited cell lines for gold-standard validation. Please check that this product meets your needs before purchasing.</p> <p>If you have any questions, special requirements or concerns, please send us an inquiry and/or contact our Support team ahead of purchase. Recommended alternatives for this product can be found below, along with publications, customer reviews and Q&As</p>

性能

形式	Liquid
存放说明	Shipped at 4°C. Upon delivery aliquot. Store at -20°C or -80°C. Avoid freeze / thaw cycle.
存储溶液	<p>pH: 7.00</p> <p>Preservative: 0.01% Thimerosal (merthiolate)</p> <p>Constituents: 1.21% Tris, 0.75% Glycine, 10% Glycerol (glycerin, glycerine)</p>
纯度	Immunogen affinity purified
克隆	多克隆
同种型	IgG

应用

The Abpromise guarantee **Abpromise™**承诺保证使用ab97800于以下的经测试应用

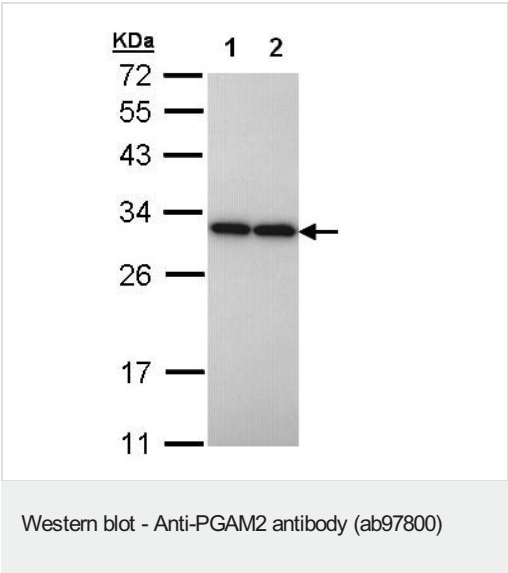
“应用说明”部分 下显示的仅为推荐的起始稀释度;实际最佳的稀释度/浓度应由使用者检定。

应用	Ab评论	说明
WB		1/500 - 1/3000. Predicted molecular weight: 29 kDa.
ICC/IF		1/100 - 1/200.

靶标

功能	Interconversion of 3- and 2-phosphoglycerate with 2,3-bisphosphoglycerate as the primer of the reaction. Can also catalyze the reaction of EC 5.4.2.4 (synthase) and EC 3.1.3.13 (phosphatase), but with a reduced activity.
组织特异性	In mammalian tissues there are two types of phosphoglycerate mutase isozymes: type-M in muscles and type-B in other tissues.
疾病相关	Defects in PGAM2 are the cause of glycogen storage disease type 10 (GSD10) [MIM:261670]. A metabolic disorder characterized by myoglobinuria, increased serum creatine kinase levels, decreased phosphoglycerate mutase activity, myalgia, muscle pain, muscle cramps and exercise intolerance.
序列相似性	Belongs to the phosphoglycerate mutase family. BPG-dependent PGAM subfamily.

图片



All lanes : Anti-PGAM2 antibody (ab97800) at 1/10000 dilution

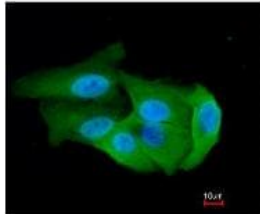
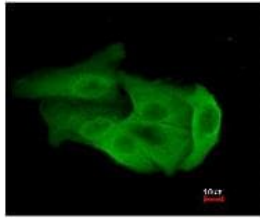
Lane 1 : H1299 whole cell lysate

Lane 2 : HeLa whole cell lysate

Lysates/proteins at 30 µg per lane.

Predicted band size: 29 kDa

12% SDS PAGE



Immunofluorescence analysis of paraformaldehyde-fixed A549, using ab97800 at 1/200 dilution. Lower image was also merged with DNA probe.

Immunocytochemistry/ Immunofluorescence - Anti-PGAM2 antibody (ab97800)

Please note: All products are "FOR RESEARCH USE ONLY. NOT FOR USE IN DIAGNOSTIC PROCEDURES"

Our Abpromise to you: Quality guaranteed and expert technical support

- Replacement or refund for products not performing as stated on the datasheet
- Valid for 12 months from date of delivery
- Response to your inquiry within 24 hours
- We provide support in Chinese, English, French, German, Japanese and Spanish
- Extensive multi-media technical resources to help you
- We investigate all quality concerns to ensure our products perform to the highest standards

If the product does not perform as described on this datasheet, we will offer a refund or replacement. For full details of the Abpromise, please visit <https://www.abcam.cn/abpromise> or contact our technical team.

Terms and conditions

- Guarantee only valid for products bought direct from Abcam or one of our authorized distributors