


Anti-Pericentrin antibody - Centrosome Marker ab4448

★★★★★ [35 Abreviews](#) [487 References](#) [5 图像](#)

概述

产品名称	Anti-Pericentrin抗体- Centrosome Marker
描述	兔多克隆抗体to Pericentrin - Centrosome Marker
宿主	Rabbit
特异性	This antibody should recognise both Pericentrin and Kendrin (also known as Pericentrin-2).
经测试应用	适用于: ICC/IF
种属反应性	与反应: Mouse, Human 预测可用于: Rat, Rabbit, African green monkey 
免疫原	Recombinant fragment. This information is proprietary to Abcam and/or its suppliers.
阳性对照	ICC/IF: Human coronary artery endothelial, MCF7, HeLa and NIH/3T3 cells.
常规说明	<p>The Life Science industry has been in the grips of a reproducibility crisis for a number of years. Abcam is leading the way in addressing this with our range of recombinant monoclonal antibodies and knockout edited cell lines for gold-standard validation. Please check that this product meets your needs before purchasing.</p> <p>If you have any questions, special requirements or concerns, please send us an inquiry and/or contact our Support team ahead of purchase. Recommended alternatives for this product can be found below, along with publications, customer reviews and Q&As</p>

性能

形式	Liquid
存放说明	Shipped at 4°C. Store at +4°C short term (1-2 weeks). Upon delivery aliquot. Store at -20°C or -80°C. Avoid freeze / thaw cycle.
存储溶液	pH: 7.40 Preservative: 0.02% Sodium azide Constituents: PBS, 1% BSA Batches of this product that have a concentration < 1mg/ml may have BSA added as a stabilising agent. If you would like information about the formulation of a specific lot, please contact our scientific support team who will be happy to help.
纯度	Protein G purified
克隆	多克隆

同种型

IgG

应用

The Abpromise guarantee **Abpromise™**承诺保证使用ab4448于以下的经测试应用

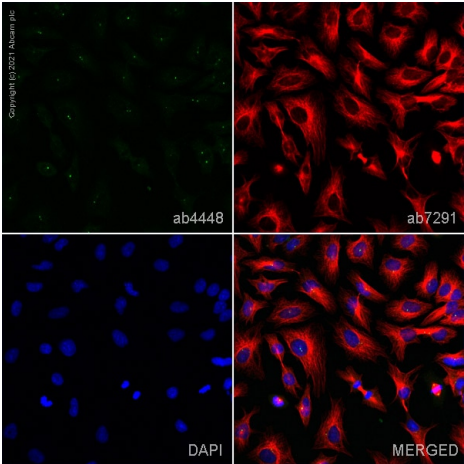
“应用说明”部分 下显示的仅为推荐的起始稀释度;实际最佳的稀释度/浓度应由使用者检定。

应用	Ab评论	说明
ICC/IF	★★★★★ (30)	Use a concentration of 0.1 - 0.5 µg/ml.

靶标

功能	Integral component of the filamentous matrix of the centrosome involved in the initial establishment of organized microtubule arrays in both mitosis and meiosis. Plays a role, together with DISC1, in the microtubule network formation. Is an integral component of the pericentriolar material (PCM). May play an important role in preventing premature centrosome splitting during interphase by inhibiting NEK2 kinase activity at the centrosome.
组织特异性	Expressed in all tissues tested, including placenta, liver, kidney and thymus.
疾病相关	Microcephalic osteodysplastic primordial dwarfism 2
结构域	Composed of a coiled-coil central region flanked by non-helical N- and C-terminals.
细胞定位	Cytoplasm > cytoskeleton > microtubule organizing center > centrosome. Centrosomal at all stages of the cell cycle. Remains associated with centrosomes following microtubule depolymerization. Colocalized with DISC1 at the centrosome.

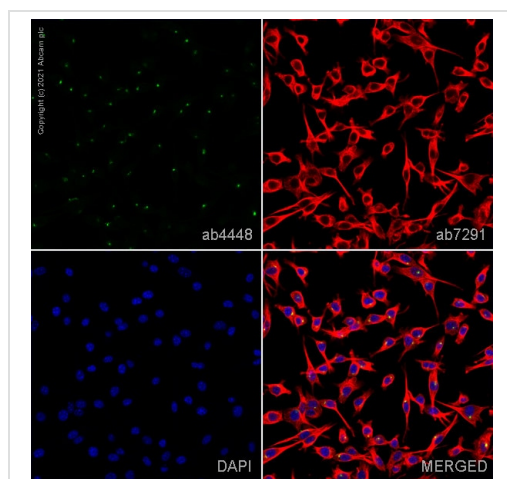
图片



Immunocytochemistry/ Immunofluorescence - Anti-Pericentrin antibody - Centrosome Marker (ab4448)

ab4448 staining Pericentrin in HeLa cells. The cells were fixed with 100% methanol (5 min), permeabilized with 0.1% PBS-Triton X-100 for 5 minutes and then blocked with 1% BSA/10% normal goat serum/0.3M glycine in 0.1% PBS-Tween for 1h. The cells were then incubated overnight at 4°C with ab4448 at 0.1µg/ml and **ab7291**, Mouse monoclonal [DM1A] to alpha Tubulin - Loading Control. Cells were then incubated with **ab150081**, Goat polyclonal Secondary Antibody to Rabbit IgG - H&L (Alexa Fluor® 488), pre-adsorbed at 1/1000 dilution (shown in green) and **ab150120**, Goat polyclonal Secondary Antibody to Mouse IgG - H&L (Alexa Fluor® 594), pre-adsorbed at 1/1000 dilution (shown in pseudocolour red). Nuclear DNA was labelled with DAPI (shown in blue).

Image was acquired with a confocal microscope (Leica-Microsystems TCS SP8) and a single confocal section is shown.

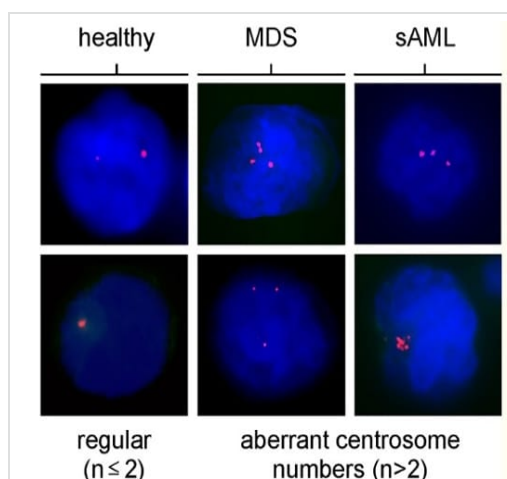


Immunocytochemistry/ Immunofluorescence - Anti-Pericentrin antibody - Centrosome Marker (ab4448)

ab4448 staining Pericentrin in NIH3T3 cells. The cells were fixed with 4% paraformaldehyde (10 min), permeabilized with 0.1% PBS-Triton X-100 for 5 minutes and then blocked with 1% BSA/10% normal goat serum/0.3M glycine in 0.1% PBS-Tween for 1h. The cells were then incubated overnight at 4°C with ab4448 at 0.1 µg/ml and **ab7291**, Mouse monoclonal [DM1A] to alpha Tubulin - Loading Control. Cells were then incubated with **ab150081**, Goat polyclonal Secondary Antibody to Rabbit IgG - H&L (Alexa Fluor® 488), pre-adsorbed at 1/1000 dilution (shown in green) and **ab150120**, Goat polyclonal Secondary Antibody to Mouse IgG - H&L (Alexa Fluor® 594), pre-adsorbed at 1/1000 dilution (shown in pseudocolour red). Nuclear DNA was labelled with DAPI (shown in blue).

Also suitable in cells fixed with 100% methanol (5 min).

Image was acquired with a confocal microscope (Leica-Microsystems TCS SP8) and a single confocal section is shown.



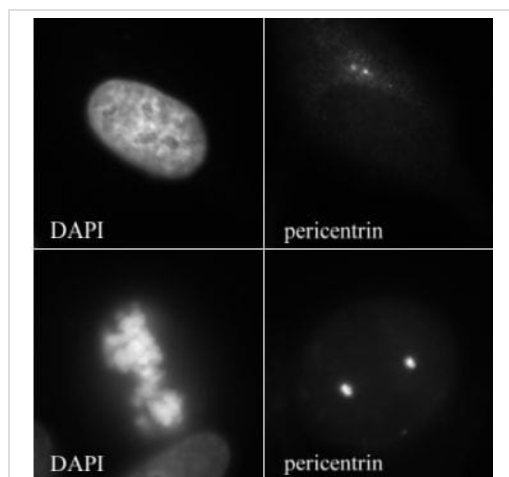
Immunocytochemistry/ Immunofluorescence - Anti-Pericentrin antibody - Centrosome Marker (ab4448)

Ruppenthal et al PLoS One. 2018 Jan 25;13(1):e0191734. doi: 10.1371/journal.pone.0191734. eCollection 2018. Fig 2. Reproduced under the Creative Commons license <http://creativecommons.org/licenses/by/4.0/>

A representative panel of indirect immunofluorescence microscopic images shows normal (regular, $n \leq 2$) and aberrant centrosome numbers ($n > 2$) in interphase cells.

Centrosomes were stained using anti-pericentrin antibody ab4448 (magenta), nuclear DNA is shown in blue (DAPI).

Statistical methods: Kruskal-Wallis test. Mann-Whitney U tests followed by Bonferroni-Holm p-value correction were made as post-hoc tests in order to compare the MDS and sAML patients with the control group.



Immunocytochemistry/ Immunofluorescence - Anti-Pericentrin antibody - Centrosome Marker (ab4448)

This image is courtesy of Gordon Chan, University of Alberta

IF staining of pericentrin in MCF7 (Human breast adenocarcinoma cell line) cells.

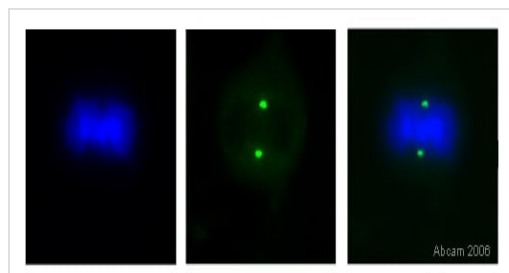
The top panel is an interphase cell showing centrosome staining.

The bottom panel shows a mitotic cell with spindle pole staining.

ab4448 was used at 1/500, but also works at higher dilutions (1/1000-1/2000).

Top panel - 630X magnification; Bottom panel -1000X magnification.

The secondary antibody was Alexa-Fluor®488 anti-rabbit.



Immunocytochemistry/ Immunofluorescence - Anti-Pericentrin antibody - Centrosome Marker (ab4448)

This image is courtesy of Roberto Giambruno, Marilena Ciciarello and Patrizia Lavia

NIH/3T3 (Mouse embryo fibroblast cell line) cells were fixed in 100% methanol for 6 minutes at -20°C, washed 3 times in PBS then incubated with ab4448 (1/2000) for 1 hour at room temperature.

The panel of images shows the nuclei stained with DAPI (blue), ab4448 staining is shown in green. 100x magnification.

Please note: All products are "FOR RESEARCH USE ONLY. NOT FOR USE IN DIAGNOSTIC PROCEDURES"

Our Abpromise to you: Quality guaranteed and expert technical support

- Replacement or refund for products not performing as stated on the datasheet
- Valid for 12 months from date of delivery
- Response to your inquiry within 24 hours

- We provide support in Chinese, English, French, German, Japanese and Spanish
- Extensive multi-media technical resources to help you
- We investigate all quality concerns to ensure our products perform to the highest standards

If the product does not perform as described on this datasheet, we will offer a refund or replacement. For full details of the Abpromise, please visit <https://www.abcam.cn/abpromise> or contact our technical team.

Terms and conditions

- Guarantee only valid for products bought direct from Abcam or one of our authorized distributors