


# Anti-Pericentrin 1/FROUNT antibody ab19044

★★★★★ [1 Abreviews](#) [3 References](#) [1 图像](#)

### 概述

产品名称	Anti-Pericentrin 1/FROUNT抗体
描述	山羊多克隆抗体to Pericentrin 1/FROUNT
宿主	Goat
经测试应用	适用于: WB
种属反应性	与反应: Human 预测可用于: Mouse, Rat 
免疫原	Synthetic peptide. This information is proprietary to Abcam and/or its suppliers.
常规说明	<p>The Life Science industry has been in the grips of a reproducibility crisis for a number of years. Abcam is leading the way in addressing this with our range of recombinant monoclonal antibodies and knockout edited cell lines for gold-standard validation. Please check that this product meets your needs before purchasing.</p> <p>If you have any questions, special requirements or concerns, please send us an inquiry and/or contact our Support team ahead of purchase. Recommended alternatives for this product can be found below, along with publications, customer reviews and Q&amp;As</p>

### 性能

形式	Liquid
存放说明	Shipped at 4°C. Upon delivery aliquot and store at -20°C. Avoid freeze / thaw cycles.
存储溶液	<p>pH: 7.30</p> <p>Preservative: 0.02% Sodium azide</p> <p>Constituents: Tris buffered saline, 0.5% BSA</p>
纯度	Immunogen affinity purified
纯化说明	Purified from goat serum by ammonium sulphate precipitation followed by antigen affinity chromatography using the immunizing peptide.
克隆	多克隆
同种型	IgG

### 应用

## The Abpromise guarantee

**Abpromise™** 承诺保证使用 ab19044 于以下的经测试应用

“应用说明”部分 下显示的仅为推荐的起始稀释度;实际最佳的稀释度/浓度应由使用者检定。

应用	Ab 评论	说明
WB		Use a concentration of 1 - 3 µg/ml. Detects a band of approximately 75 kDa (predicted molecular weight: 75 kDa). 1 hour primary incubation is recommended for this product.

## 靶标

### 功能

Essential component of the nuclear pore complex (NPC) that seems to be required for NPC assembly and maintenance. As part of the NPC Nup107-160 subcomplex plays a role in RNA export and in tethering NUP98/Nup98 and NUP153 to the nucleus. The Nup107-160 complex seems to be required for spindle assembly during mitosis. NUP85 is required for membrane clustering of CCL2-activated CCR2. Seems to be involved in CCR2-mediated chemotaxis of monocytes and may link activated CCR2 to the phosphatidylinositol 3-kinase-Rac-lammellipodium protrusion cascade.

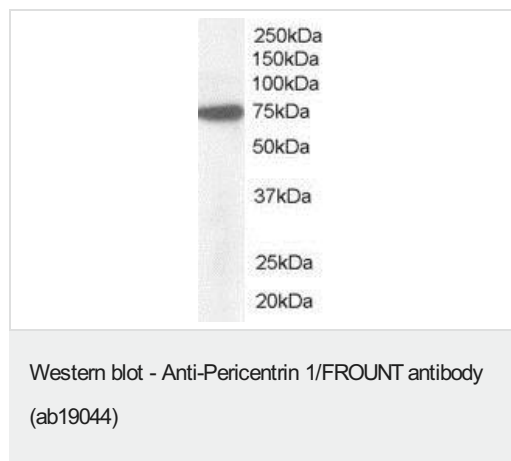
### 序列相似性

Belongs to the nucleoporin Nup85 family.

### 细胞定位

Nucleus > nuclear pore complex. Chromosome > centromere > kinetochore. Cytoplasm > cytoskeleton > spindle. Cytoplasm. Nucleus membrane. During mitosis, localizes to the kinetochores and spindle poles. Upon CCL2 stimulation translocates from the cytoplasm to the membrane and colocalizes with CCR2 at the front of migrating cells.

## 图片



ab19044 (1µg/ml) staining of HeLa lysate (35µg protein in RIPA buffer) approx. 75kDa. Primary incubation was 1 hour. Detected by chemiluminescence.

**Please note:** All products are "FOR RESEARCH USE ONLY. NOT FOR USE IN DIAGNOSTIC PROCEDURES"

## Our Abpromise to you: Quality guaranteed and expert technical support

- Replacement or refund for products not performing as stated on the datasheet
- Valid for 12 months from date of delivery
- Response to your inquiry within 24 hours

- We provide support in Chinese, English, French, German, Japanese and Spanish
- Extensive multi-media technical resources to help you
- We investigate all quality concerns to ensure our products perform to the highest standards

If the product does not perform as described on this datasheet, we will offer a refund or replacement. For full details of the Abpromise, please visit <https://www.abcam.cn/abpromise> or contact our technical team.

#### **Terms and conditions**

---

- Guarantee only valid for products bought direct from Abcam or one of our authorized distributors