

PerCP/Cy5.5® Anti-CD20 antibody [2H7] ab157321

1 图像

概述

产品名称	PerCP荧光/Cy5.5® Anti-CD20抗体[2H7]
描述	PerCP荧光/Cy5.5®小鼠单克隆抗体[2H7] to CD20
宿主	Mouse
偶联物	PerCP/Cy5.5®. Ex: 482nm, Em: 690nm
经测试应用	适用于: Flow Cyt
种属反应性	与反应: Human, Non human primates
免疫原	Tissue, cells or virus corresponding to Human CD20. Human tonsillar B cells.
常规说明	<p>Purified antibody is conjugated with tandem dye PerCP/Cy5.5® under optimum conditions. The conjugate is purified by size-exclusion chromatography and adjusted for direct use. No reconstitution is necessary.</p> <p>The Life Science industry has been in the grips of a reproducibility crisis for a number of years. Abcam is leading the way in addressing this with our range of recombinant monoclonal antibodies and knockout edited cell lines for gold-standard validation. Please check that this product meets your needs before purchasing.</p> <p>If you have any questions, special requirements or concerns, please send us an inquiry and/or contact our Support team ahead of purchase. Recommended alternatives for this product can be found below, along with publications, customer reviews and Q&As</p>

性能

形式	Liquid
存放说明	Shipped at 4°C. Store at +4°C.
存储溶液	pH: 7.4 Preservative: 0.1% Sodium azide Constituents: 99% PBS, 0.2% BSA
纯度	Size exclusion
克隆	单克隆
克隆编号	2H7
同种型	IgG2b

应用

The Abpromise guarantee

Abpromise™承诺保证使用ab157321于以下的经测试应用

“应用说明”部分下显示的仅为推荐的起始稀释度;实际最佳的稀释度/浓度应由使用者检定。

应用	Ab评论	说明
Flow Cyt		Use 4µl for 10 ⁶ cells. (or 100 µl of whole blood).

靶标

功能

This protein may be involved in the regulation of B-cell activation and proliferation.

组织特异性

Expressed on B-cells.

疾病相关

Defects in MS4A1 are the cause of immunodeficiency common variable type 5 (CVID5) [MIM:613495]; also called antibody deficiency due to CD20 defect. CVID5 is a primary immunodeficiency characterized by antibody deficiency, hypogammaglobulinemia, recurrent bacterial infections and an inability to mount an antibody response to antigen. The defect results from a failure of B-cell differentiation and impaired secretion of immunoglobulins; the numbers of circulating B cells is usually in the normal range, but can be low.

序列相似性

Belongs to the MS4A family.

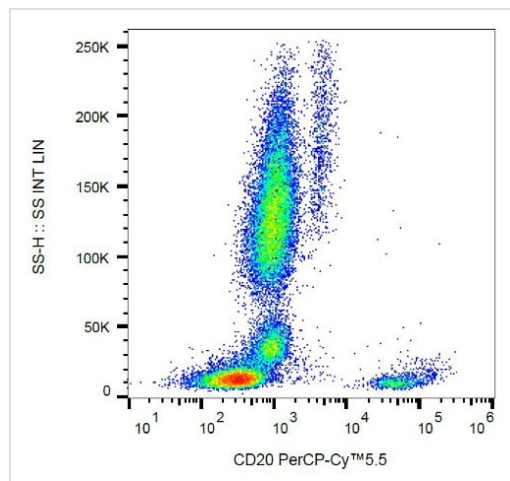
翻译后修饰

Phosphorylated. Might be functionally regulated by protein kinase(s).

细胞定位

Membrane.

图片



Flow Cytometry analysis of human peripheral blood cells labeling CD20 with Anti-CD20 antibody [2H7] (PerCP/Cy5.5®) (ab157321).

Flow Cytometry - PerCP/Cy5.5® Anti-CD20 antibody [2H7] (ab157321)

Please note: All products are "FOR RESEARCH USE ONLY. NOT FOR USE IN DIAGNOSTIC PROCEDURES"

Our Abpromise to you: Quality guaranteed and expert technical support

- Replacement or refund for products not performing as stated on the datasheet
- Valid for 12 months from date of delivery
- Response to your inquiry within 24 hours

- We provide support in Chinese, English, French, German, Japanese and Spanish
- Extensive multi-media technical resources to help you
- We investigate all quality concerns to ensure our products perform to the highest standards

If the product does not perform as described on this datasheet, we will offer a refund or replacement. For full details of the Abpromise, please visit <https://www.abcam.cn/abpromise> or contact our technical team.

Terms and conditions

- Guarantee only valid for products bought direct from Abcam or one of our authorized distributors