

PerCP Anti-CD68 antibody [FA-11] ab220509

1 图像

概述

产品名称	PerCP荧光Anti-CD68抗体[FA-11]
描述	PerCP荧光大鼠单克隆抗体[FA-11] to CD68
宿主	Rat
偶联物	PerCP. Ex: 482nm, Em: 675nm
经测试应用	适用于: Flow Cyt (Intra)
种属反应性	与反应: Mouse
免疫原	Full length native protein (purified). This information is proprietary to Abcam and/or its suppliers.
阳性对照	Flow Cyt (Intra): Raw264.7 cells
常规说明	<p>The Life Science industry has been in the grips of a reproducibility crisis for a number of years. Abcam is leading the way in addressing this with our range of recombinant monoclonal antibodies and knockout edited cell lines for gold-standard validation. Please check that this product meets your needs before purchasing.</p> <p>If you have any questions, special requirements or concerns, please send us an inquiry and/or contact our Support team ahead of purchase. Recommended alternatives for this product can be found below, along with publications, customer reviews and Q&As</p>

性能

形式	Liquid
存放说明	Shipped at 4°C. Upon delivery aliquot. Store at +4°C. Do Not Freeze. Store In the Dark.
存储溶液	<p>pH: 7.40</p> <p>Preservative: 0.02% Sodium azide</p> <p>Constituents: PBS, 1% BSA</p>
纯度	Immunogen affinity purified
纯化说明	Purified IgG prepared by affinity chromatography on Protein G from tissue culture supernatant.
克隆	单克隆
克隆编号	FA-11
同种型	IgG2a

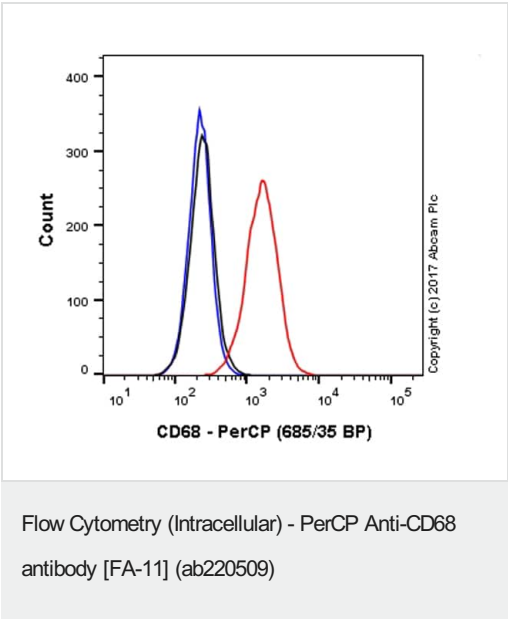
应用

The Abpromise guarantee Abpromise™ 承诺保证使用ab220509于以下的经测试应用		
“应用说明”部分 下显示的仅为推荐的起始稀释度;实际最佳的稀释度/浓度应由使用者检定。		
应用	Ab评论	说明
Flow Cyt (Intra)		1/50. The cellular localisation of this product has been verified in ICC/IF.

靶标

功能	Could play a role in phagocytic activities of tissue macrophages, both in intracellular lysosomal metabolism and extracellular cell-cell and cell-pathogen interactions. Binds to tissue- and organ-specific lectins or selectins, allowing homing of macrophage subsets to particular sites. Rapid recirculation of CD68 from endosomes and lysosomes to the plasma membrane may allow macrophages to crawl over selectin-bearing substrates or other cells.
组织特异性	Highly expressed by blood monocytes and tissue macrophages. Also expressed in lymphocytes, fibroblasts and endothelial cells. Expressed in many tumor cell lines which could allow them to attach to selectins on vascular endothelium, facilitating their dissemination to secondary sites.
序列相似性	Belongs to the LAMP family.
翻译后修饰	N- and O-glycosylated.
细胞定位	Cell membrane and Endosome membrane. Lysosome membrane.

图片



Overlay histogram showing Raw264.7 cells stained with ab220509 (red line). The cells were fixed with 80% methanol (5 min) and then permeabilized with 0.1% PBS-Triton X-100 for 15 min. The cells were then incubated in 1x PBS / 10% normal goat serum to block non-specific protein-protein interactions followed by the antibody (ab220509, 1/50 dilution) for 30 min at 22°C.

Isotype control antibody (black line) was Rabbit IgG (monoclonal) PerCP ([ab222107](#)) used at the same concentration and conditions as the primary antibody. Unlabelled sample (blue line) was also used as a control.

Acquisition of >5,000 events were collected using a 50 mW Blue laser (488nm) and 685/35 bandpass filter.

Please note: All products are "FOR RESEARCH USE ONLY. NOT FOR USE IN DIAGNOSTIC PROCEDURES"

Our Abpromise to you: Quality guaranteed and expert technical support

- Replacement or refund for products not performing as stated on the datasheet
- Valid for 12 months from date of delivery
- Response to your inquiry within 24 hours
- We provide support in Chinese, English, French, German, Japanese and Spanish
- Extensive multi-media technical resources to help you
- We investigate all quality concerns to ensure our products perform to the highest standards

If the product does not perform as described on this datasheet, we will offer a refund or replacement. For full details of the Abpromise, please visit <https://www.abcam.cn/abpromise> or contact our technical team.

Terms and conditions

- Guarantee only valid for products bought direct from Abcam or one of our authorized distributors