


Anti-PER1 antibody - N-terminal ab136451

★★★★★ [2 Abreviews](#) [8 References](#) [1 图像](#)

概述

产品名称	Anti-PER1抗体- N-terminal
描述	兔多克隆抗体to PER1 - N-terminal
宿主	Rabbit
经测试应用	适用于: WB
种属反应性	与反应: Human 预测可用于: Chimpanzee, Rhesus monkey 
免疫原	Recombinant fragment: EGADGGGDRPGEPFC , corresponding to N terminal amino acids 6-21 of Human PER1 Run BLAST with Run BLAST with
常规说明	<p>The Life Science industry has been in the grips of a reproducibility crisis for a number of years. Abcam is leading the way in addressing this with our range of recombinant monoclonal antibodies and knockout edited cell lines for gold-standard validation. Please check that this product meets your needs before purchasing.</p> <p>If you have any questions, special requirements or concerns, please send us an inquiry and/or contact our Support team ahead of purchase. Recommended alternatives for this product can be found below, along with publications, customer reviews and Q&As</p>

性能

形式	Liquid
存放说明	Store at -20°C or lower. Aliquot to avoid repeated freezing and thawing.
存储溶液	Preservative: 0.05% Sodium azide
纯度	Whole antiserum
克隆	多克隆

应用

The Abpromise guarantee [Abpromise™](#)承诺保证使用ab136451于以下的经测试应用

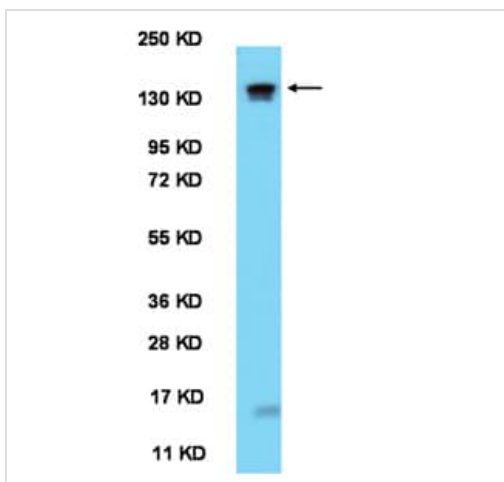
“应用说明”部分 下显示的仅为推荐的起始稀释度;实际最佳的稀释度/浓度应由使用者检定。

应用	Ab评论	说明
WB	★★★★★ (1)	1/500. Predicted molecular weight: 136 kDa.

靶标

功能	Component of the circadian clock mechanism which is essential for generating circadian rhythms. Negative element in the circadian transcriptional loop. Influences clock function by interacting with other circadian regulatory proteins and transporting them to the nucleus. Negatively regulates CLOCK NPAS2-BMAL1 BMAL2-induced transactivation.
组织特异性	Widely expressed. Found in heart, brain, placenta, lung, liver, skeletal muscle, pancreas, kidney, spleen, thymus, prostate, testis, ovary and small intestine. Highest level in skeletal muscle. Low level in kidney.
序列相似性	Contains 1 PAC (PAS-associated C-terminal) domain. Contains 2 PAS (PER-ARNT-SIM) domains.
翻译后修饰	Phosphorylated on serine residues by CSNK1E. Also can be phosphorylated by the delta isoform. Phosphorylation by CSNK1 retains PER1 in the cytoplasm and leads to its ubiquitination and subsequent degradation. Phosphorylated upon DNA damage, probably by ATM or ATR. Ubiquitinated.
细胞定位	Nucleus. Cytoplasm. Mainly nuclear. Nucleocytoplasmic shuttling is effected by interaction with other circadian core oscillator proteins and/or by phosphorylation. Retention of PER1 in the cytoplasm occurs through PER1-PER2 heterodimer formation or by interaction with CSNK1E and/or phosphorylation which appears to mask the PER1 nuclear localization signal. Also translocated to the nucleus by CRY1 or CRY2.

图片



Anti-PER1 antibody - N-terminal (ab136451) at 1/500 dilution +
Human brain lysate

Predicted band size: 136 kDa

Western blot - Anti-PER1 antibody - N-terminal
(ab136451)

Please note: All products are "FOR RESEARCH USE ONLY. NOT FOR USE IN DIAGNOSTIC PROCEDURES"

Our Abpromise to you: Quality guaranteed and expert technical support

- Replacement or refund for products not performing as stated on the datasheet
- Valid for 12 months from date of delivery
- Response to your inquiry within 24 hours

- We provide support in Chinese, English, French, German, Japanese and Spanish
- Extensive multi-media technical resources to help you
- We investigate all quality concerns to ensure our products perform to the highest standards

If the product does not perform as described on this datasheet, we will offer a refund or replacement. For full details of the Abpromise, please visit <https://www.abcam.cn/abpromise> or contact our technical team.

Terms and conditions

- Guarantee only valid for products bought direct from Abcam or one of our authorized distributors