

Anti-PEN2 antibody - Carboxyterminal end ab62514

★★★★★ [1 Abreviews](#) [2 References](#) [2 图像](#)

概述

产品名称	Anti-PEN2抗体- Carboxyterminal end
描述	兔多克隆抗体to PEN2 - Carboxyterminal end
宿主	Rabbit
经测试应用	适用于: WB, ICC/IF
种属反应性	与反应: Human
免疫原	Synthetic peptide (Human) of 13 amino acids from near the C-terminus of PEN2
阳性对照	K562 cells
常规说明	<p>The Life Science industry has been in the grips of a reproducibility crisis for a number of years. Abcam is leading the way in addressing this with our range of recombinant monoclonal antibodies and knockout edited cell lines for gold-standard validation. Please check that this product meets your needs before purchasing.</p> <p>If you have any questions, special requirements or concerns, please send us an inquiry and/or contact our Support team ahead of purchase. Recommended alternatives for this product can be found below, along with publications, customer reviews and Q&amp;As</p>

性能

形式	Liquid
存放说明	Shipped at 4°C. Store at +4°C.
存储溶液	pH: 7.2 Preservative: 0.02% Sodium azide Constituent: PBS
纯度	Immunogen affinity purified
克隆	多克隆
同种型	IgG

应用

**The Abpromise guarantee**      **Abpromise™**承诺保证使用ab62514于以下的经测试应用

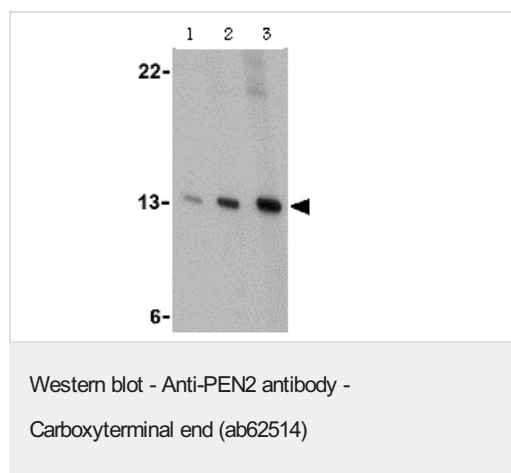
“应用说明”部分 下显示的仅为推荐的起始稀释度;实际最佳的稀释度/浓度应由使用者检定。

应用	Ab评论	说明
WB	★★★★★ (1)	Use a concentration of 0.5 - 2 µg/ml. Detects a band of approximately 12 kDa (predicted molecular weight: 12 kDa).
ICC/IF		Use a concentration of 20 µg/ml.

## 靶标

功能	Essential subunit of the gamma-secretase complex, an endoprotease complex that catalyzes the intramembrane cleavage of integral membrane proteins such as Notch receptors and APP (beta-amyloid precursor protein). Probably represents the last step of maturation of gamma-secretase, facilitating endoproteolysis of presenilin and conferring gamma-secretase activity.
组织特异性	Widely expressed. Expressed in leukocytes, lung, placenta, small intestine, liver, kidney, spleen thymus, skeletal muscle, heart and brain.
序列相似性	Belongs to the PEN-2 family.
细胞定位	Endoplasmic reticulum membrane. Golgi apparatus > Golgi stack membrane. Predominantly located in the endoplasmic reticulum and in the cis-Golgi.

## 图片



**Lane 1 :** Anti-PEN2 antibody - Carboxyterminal end (ab62514) at 0.5 µg/ml

**Lane 2 :** Anti-PEN2 antibody - Carboxyterminal end (ab62514) at 1 µg/ml

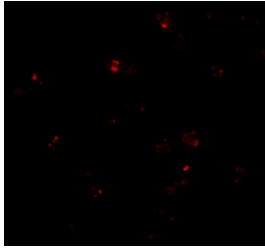
**Lane 3 :** Anti-PEN2 antibody - Carboxyterminal end (ab62514) at 2 µg/ml

**All lanes :** K562 cell lysate

Lysates/proteins at 15 µg per lane.

**Predicted band size:** 12 kDa

**Observed band size:** 12 kDa



Immunofluorescence of K562 cells using ab62514 at 20 µg/ml.

Immunocytochemistry/ Immunofluorescence - Anti-PEN2 antibody - Carboxyterminal end (ab62514)

**Please note:** All products are "FOR RESEARCH USE ONLY. NOT FOR USE IN DIAGNOSTIC PROCEDURES"

### Our Abpromise to you: Quality guaranteed and expert technical support

---

- Replacement or refund for products not performing as stated on the datasheet
- Valid for 12 months from date of delivery
- Response to your inquiry within 24 hours
- We provide support in Chinese, English, French, German, Japanese and Spanish
- Extensive multi-media technical resources to help you
- We investigate all quality concerns to ensure our products perform to the highest standards

If the product does not perform as described on this datasheet, we will offer a refund or replacement. For full details of the Abpromise, please visit <https://www.abcam.cn/abpromise> or contact our technical team.

### Terms and conditions

---

- Guarantee only valid for products bought direct from Abcam or one of our authorized distributors