

Anti-PEDF antibody [EPR9826(B)] ab157207

重组 RabMAb

5 References 2 图像

概述	
产品名称	Anti-PEDF抗体[EPR9826(B)]
描述	兔单克隆抗体[EPR9826(B)] to PEDF
宿主	Rabbit
经测试应用	适用于: WB 不适用于: Flow Cyt, ICC/IF, IHC-P or IP
种属反应性	与反应: Human
免疫原	Synthetic peptide. This information is proprietary to Abcam and/or its suppliers.
阳性对照	WB: Human plasma; Human serum; Y79, A549, HEK-293T and K562 cell lysates.
常规说明	<p>This product is a recombinant monoclonal antibody, which offers several advantages including:</p> <ul style="list-style-type: none"><li>- High batch-to-batch consistency and reproducibility</li><li>- Improved sensitivity and specificity</li><li>- Long-term security of supply</li><li>- Animal-free production</li></ul> <p>For more information <a href="#">see here</a>.</p> <p>Our RabMAb<sup>®</sup> technology is a patented hybridoma-based technology for making rabbit monoclonal antibodies. For details on our patents, please refer to <a href="#">RabMAb<sup>®</sup> patents</a>.</p> <p>Mouse, Rat: We have preliminary internal testing data to indicate this antibody may not react with these species. Please contact us for more information.</p>
性能	
形式	Liquid
存放说明	Shipped at 4°C. Store at +4°C short term (1-2 weeks). Upon delivery aliquot. Store at -20°C. Avoid freeze / thaw cycle.
存储溶液	pH: 7.2 Preservative: 0.01% Sodium azide Constituents: PBS, 40% Glycerol (glycerin, glycerine), 0.5% BSA
纯度	Protein A purified
克隆	单克隆

克隆编号EPR9826(B)  
同种型IgG

应用

The Abpromise guarantee      **Abpromise™**承诺保证使用ab157207于以下的经测试应用

“应用说明”部分 下显示的仅为推荐的起始稀释度;实际最佳的稀释度/浓度应由使用者检定。

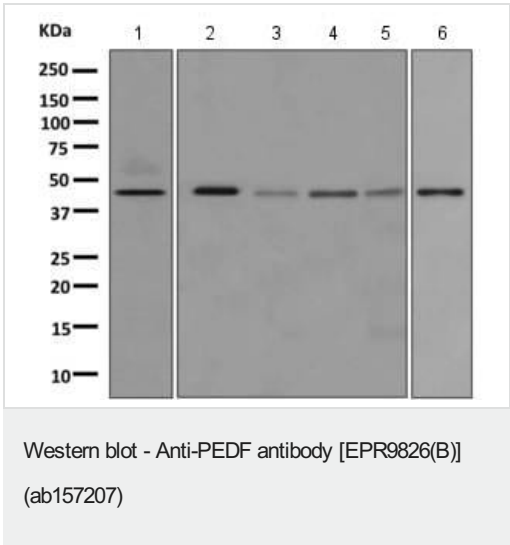
应用	Ab评论	说明
WB		1/1000 - 1/10000. Predicted molecular weight: 46 kDa.

应用说明      Is unsuitable for Flow Cyt, ICC/IF, IHC-P or IP.

靶标

功能	Neurotrophic protein; induces extensive neuronal differentiation in retinoblastoma cells. Potent inhibitor of angiogenesis. As it does not undergo the S (stressed) to R (relaxed) conformational transition characteristic of active serpins, it exhibits no serine protease inhibitory activity.
组织特异性	Retinal pigment epithelial cells and blood plasma.
序列相似性	Belongs to the serpin family.
发展阶段	Expressed in quiescent cells.
结构域	The N-terminal (AA 44-121) exhibits neurite outgrowth-inducing activity. The C-terminal exposed loop (AA 382-418) is essential for serpin activity.
翻译后修饰	The N-terminus is blocked. Extracellular phosphorylation enhances antiangiogenic activity. N- and O-glycosylated. O-glycosylated with a core 1 or possibly core 8 glycan.
细胞定位	Secreted. Melanosome. Enriched in stage I melanosomes.

图片







**All lanes :** Anti-PEDF antibody [EPR9826(B)] (ab157207) at 1/1000 dilution

- Lane 1 :** Human plasma
- Lane 2 :** Human serum
- Lane 3 :** Y79 (Human retinoblastoma cell line) lysate
- Lane 4 :** A549 (Human lung carcinoma cell line) lysate
- Lane 5 :** HEK-293T (Human epithelial cell line from embryonic kidney transformed with large T antigen) lysate
- Lane 6 :** K562 (Human chronic myelogenous leukemia cell line from bone marrow) lysate

Lysates/proteins at 10 µg per lane.

**Predicted band size: 46 kDa**

Why choose a recombinant antibody?

 <p><b>Research with confidence</b> Consistent and reproducible results</p>	 <p><b>Long-term and scalable supply</b> Recombinant technology</p>
 <p><b>Success from the first experiment</b> Confirmed specificity</p>	 <p><b>Ethical standards compliant</b> Animal-free production</p>

Anti-PEDF antibody [EPR9826(B)] (ab157207)

**Please note:** All products are "FOR RESEARCH USE ONLY. NOT FOR USE IN DIAGNOSTIC PROCEDURES"

### Our Abpromise to you: Quality guaranteed and expert technical support

---

- Replacement or refund for products not performing as stated on the datasheet
- Valid for 12 months from date of delivery
- Response to your inquiry within 24 hours
- We provide support in Chinese, English, French, German, Japanese and Spanish
- Extensive multi-media technical resources to help you
- We investigate all quality concerns to ensure our products perform to the highest standards

If the product does not perform as described on this datasheet, we will offer a refund or replacement. For full details of the Abpromise, please visit <https://www.abcam.cn/abpromise> or contact our technical team.

### Terms and conditions

---

- Guarantee only valid for products bought direct from Abcam or one of our authorized distributors