

PE/Cy7® Anti-Ly6g antibody [RB6-8C5] ab25514

13 References [1 图像](#)

概述

产品名称	PE/Cy7® Anti-Ly6g抗体[RB6-8C5]
描述	PE/Cy7®大鼠单克隆抗体[RB6-8C5] to Ly6g
宿主	Rat
偶联物	PE/Cy7®. Ex: 496nm, Em: 774nm
经测试应用	适用于: Flow Cyt
种属反应性	与反应: Mouse
免疫原	Tissue, cells or virus corresponding to Ly6g. Mouse granulocytes
阳性对照	Flow Cyt: C57Bl/6 bone marrow cells.
常规说明	<p>This product or portions thereof is manufactured under license from Carnegie Mellon University under U.S. Patent Number 5, 268, 486 and related patents. Cy® and CyDye® are trademarks of Cytiva.</p> <p>The Life Science industry has been in the grips of a reproducibility crisis for a number of years. Abcam is leading the way in addressing this with our range of recombinant monoclonal antibodies and knockout edited cell lines for gold-standard validation. Please check that this product meets your needs before purchasing.</p> <p>If you have any questions, special requirements or concerns, please send us an inquiry and/or contact our Support team ahead of purchase. Recommended alternatives for this product can be found below, along with publications, customer reviews and Q&As</p>

性能

形式	Liquid
存放说明	Shipped at 4°C. Store at +4°C. Avoid freeze / thaw cycle. Store In the Dark.
存储溶液	<p>pH: 7.20</p> <p>Preservative: 0.09% Sodium azide</p> <p>Constituents: 0.1% Gelatin, 0.88% Sodium chloride, 0.12% Monobasic dihydrogen sodium phosphate</p>
纯度	Affinity purified
纯化说明	Purified from TCS
克隆	单克隆

克隆编号 RB6-8C5
 同种型 IgG2b
 轻链类型 kappa

应用

The Abpromise guarantee **Abpromise™**承诺保证使用ab25514于以下的经测试应用

“应用说明”部分 下显示的仅为推荐的起始稀释度;实际最佳的稀释度/浓度应由使用者检定。

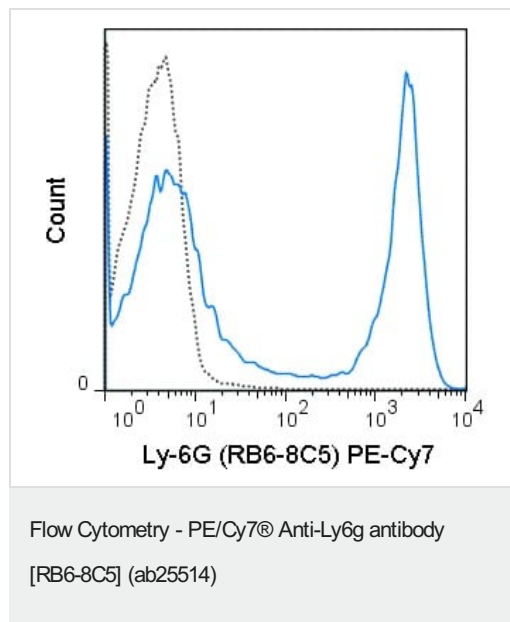
应用	Ab评论	说明
Flow Cyt		Use at an assay dependent concentration. ab154461 - Rat monoclonal IgG2b, is suitable for use as an isotype control with this antibody.

靶标

相关性 Ly6G is a GPI-anchored protein, that is also known as the myeloid differentiation antigen Gr1. The antigen is transiently expressed on monocytes in the bone marrow. The level of antigen expression in the bone marrow directly correlates with granulocyte differentiation and maturation. Ly6G is expressed predominantly on neutrophils, also in a subset of eosinophils, differentiating pre-monocytes, and plasmacytoid dendritic cells.

细胞定位 Attached to the membrane by a GPI-anchor.

图片



C57Bl/6 bone marrow cells stained with 0.25µg ab25514 (solid line) or 0.25µg PE-Cy7-conjugated rat IgG2b isotype control (dashed line).

Please note: All products are "FOR RESEARCH USE ONLY. NOT FOR USE IN DIAGNOSTIC PROCEDURES"

Our Abpromise to you: Quality guaranteed and expert technical support

- Replacement or refund for products not performing as stated on the datasheet
- Valid for 12 months from date of delivery
- Response to your inquiry within 24 hours

- We provide support in Chinese, English, French, German, Japanese and Spanish
- Extensive multi-media technical resources to help you
- We investigate all quality concerns to ensure our products perform to the highest standards

If the product does not perform as described on this datasheet, we will offer a refund or replacement. For full details of the Abpromise, please visit <https://www.abcam.cn/abpromise> or contact our technical team.

Terms and conditions

- Guarantee only valid for products bought direct from Abcam or one of our authorized distributors