

# PE/Cy5® Anti-CD80 antibody [MEM-233] ab233572

## 1 图像

### 概述

<b>产品名称</b>	PE/Cy5® Anti-CD80抗体[MEM-233]
<b>描述</b>	PE/Cy5®小鼠单克隆抗体[MEM-233] to CD80
<b>宿主</b>	Mouse
<b>偶联物</b>	PE/Cy5®. Ex: 496nm, Em: 670nm
<b>经测试应用</b>	<b>适用于:</b> Flow Cyt
<b>种属反应性</b>	<b>与反应:</b> Human
<b>免疫原</b>	Fusion protein corresponding to Human CD80. Extracellular domain of human CD80 fused to human IgG1(Fc).
<b>阳性对照</b>	Flow Cytometry: CD80-transfected P815 cells.
<b>常规说明</b>	<p>This product or portions thereof is manufactured under license from Carnegie Mellon University under U.S. Patent Number 5, 268, 486 and related patents. Cy® and CyDye® are trademarks of Cytiva.</p> <p>The Life Science industry has been in the grips of a reproducibility crisis for a number of years. Abcam is leading the way in addressing this with our range of recombinant monoclonal antibodies and knockout edited cell lines for gold-standard validation. Please check that this product meets your needs before purchasing.</p> <p>If you have any questions, special requirements or concerns, please send us an inquiry and/or contact our Support team ahead of purchase. Recommended alternatives for this product can be found below, along with publications, customer reviews and Q&amp;As</p>

### 性能

<b>形式</b>	Liquid
<b>存放说明</b>	Shipped at 4°C. Store at +4°C. Store In the Dark.
<b>存储溶液</b>	pH: 7.4 Preservative: 0.0975% Sodium azide Constituent: PBS
<b>纯度</b>	Size exclusion
<b>克隆</b>	单克隆
<b>克隆编号</b>	MEM-233

## 应用

**The Abpromise guarantee** **Abpromise™**承诺保证使用ab233572于以下的经测试应用

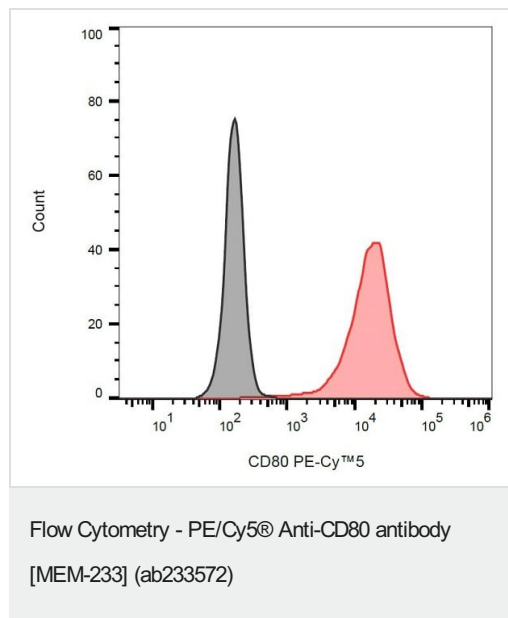
“应用说明”部分 下显示的仅为推荐的起始稀释度;实际最佳的稀释度/浓度应由使用者检定。

应用	Ab评论	说明
Flow Cyt		Use 4µl for 10 <sup>6</sup> cells.

## 靶标

<b>功能</b>	Involved in the costimulatory signal essential for T-lymphocyte activation. T-cell proliferation and cytokine production is induced by the binding of CD28 or CTLA-4 to this receptor.
<b>组织特异性</b>	Expressed on activated B-cells, macrophages and dendritic cells.
<b>序列相似性</b>	Contains 1 Ig-like C2-type (immunoglobulin-like) domain. Contains 1 Ig-like V-type (immunoglobulin-like) domain.
<b>细胞定位</b>	Membrane.

## 图片



Flow Cytometry analysis of CD80-transfected P815 cells, labeling CD80 with ab233572 (red) compared to a negative control (black). Gated on P815 cells.

**Please note:** All products are "FOR RESEARCH USE ONLY. NOT FOR USE IN DIAGNOSTIC PROCEDURES"

## Our Abpromise to you: Quality guaranteed and expert technical support

- Replacement or refund for products not performing as stated on the datasheet

- Valid for 12 months from date of delivery
- Response to your inquiry within 24 hours
  
- We provide support in Chinese, English, French, German, Japanese and Spanish
- Extensive multi-media technical resources to help you
- We investigate all quality concerns to ensure our products perform to the highest standards

If the product does not perform as described on this datasheet, we will offer a refund or replacement. For full details of the Abpromise, please visit <https://www.abcam.cn/abpromise> or contact our technical team.

### **Terms and conditions**

---

- Guarantee only valid for products bought direct from Abcam or one of our authorized distributors