

PE/Cy5® Anti-CD3 epsilon antibody [C363.29B] ab25531

1 References **1 图像**

概述

产品名称	PE/Cy5® Anti-CD3 epsilon抗体[C363.29B]
描述	PE/Cy5®大鼠单克隆抗体[C363.29B] to CD3 epsilon
宿主	Rat
偶联物	PE/Cy5®. Ex: 496nm, Em: 670nm
经测试应用	适用于: Flow Cyt
种属反应性	与反应: Mouse
免疫原	Full length protein corresponding to Mouse CD3 epsilon. " IL-4 producing Th2 cell lines including D10"
表位	This antibody recognises an epitope on the 25kDa epsilon chain of the CD3/TCR complex.
常规说明	<p>In the presence of Fc receptor-bearing accessory cells, this antibody can activate primed and naïve T cell in vitro. When immobilized it can also activate both normal T lymphocytes and cloned T cell lines provided the appropriate accessory signals are present. The antibody is cytolytic, is easily used for cell surface staining. This antibody has shown to be useful in studies of in vitro depletion of CD3+ cells, and in vitro activation of T cells (accessory cells must be provided).</p> <p>This product or portions thereof is manufactured under license from Carnegie Mellon University under U.S. Patent Number 5, 268, 486 and related patents. Cy® and CyDye® are trademarks of Cytiva.</p> <p>The Life Science industry has been in the grips of a reproducibility crisis for a number of years. Abcam is leading the way in addressing this with our range of recombinant monoclonal antibodies and knockout edited cell lines for gold-standard validation. Please check that this product meets your needs before purchasing.</p> <p>If you have any questions, special requirements or concerns, please send us an inquiry and/or contact our Support team ahead of purchase. Recommended alternatives for this product can be found below, along with publications, customer reviews and Q&As</p>

性能

形式	Liquid
存放说明	Shipped at 4°C. Store at +4°C. Store In the Dark.
存储溶液	pH: 7.1 Preservative: 0.09% Sodium azide

Constituents: PBS, 0.2% Gelatin, 16% Sucrose

Also contains a stabilizing agent.

纯度

IgG fraction

Primary antibody说明

In the presence of Fc receptor-bearing accessory cells, this antibody can activate primed and naïve T cell in vitro. When immobilized it can also activate both normal T lymphocytes and cloned T cell lines provided the appropriate accessory signals are present. The antibody is cytolytic, is easily used for cell surface staining and is a good immunoprecipitating antibody. This antibody has shown to be useful in studies of in vitro depletion of CD3+ cells, and in vitro activation of T cells (accessory cells must be provided).

克隆

单克隆

克隆编号

C363.29B

同种型

IgG2c

轻链类型

kappa

应用

The Abpromise guarantee

Abpromise™ 承诺保证使用ab25531于以下的经测试应用

“应用说明”部分 下显示的仅为推荐的起始稀释度;实际最佳的稀释度/浓度应由使用者检定。

应用	Ab评论	说明
Flow Cyt		Use 1µg for 10 ⁶ cells.

靶标

功能

The CD3 complex mediates signal transduction.

序列相似性

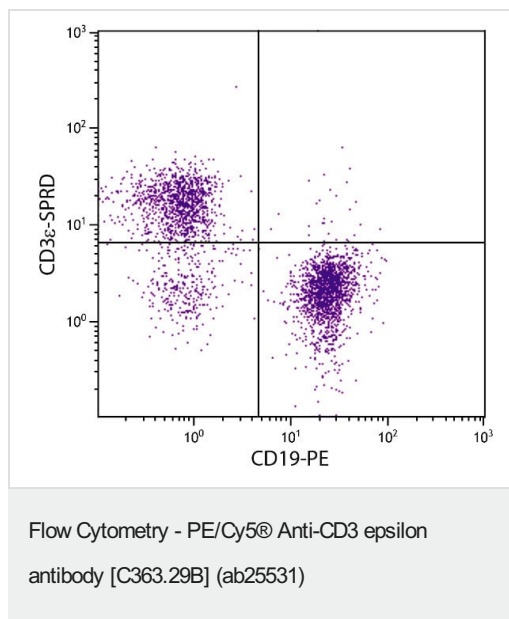
Contains 1 Ig-like (immunoglobulin-like) domain.

Contains 1 ITAM domain.

细胞定位

Membrane.

图片



Flow Cytometry analysis of BALB/c mouse splenocytes stained with Anti-CD3 epsilon antibody [C363.29B] (PE/Cy5) ab25531 (1 µg/10⁶cells) and Rat Anti-Mouse CD19-PE.

Please note: All products are "FOR RESEARCH USE ONLY. NOT FOR USE IN DIAGNOSTIC PROCEDURES"

Our Abpromise to you: Quality guaranteed and expert technical support

- Replacement or refund for products not performing as stated on the datasheet
- Valid for 12 months from date of delivery
- Response to your inquiry within 24 hours
- We provide support in Chinese, English, French, German, Japanese and Spanish
- Extensive multi-media technical resources to help you
- We investigate all quality concerns to ensure our products perform to the highest standards

If the product does not perform as described on this datasheet, we will offer a refund or replacement. For full details of the Abpromise, please visit <https://www.abcam.cn/abpromise> or contact our technical team.

Terms and conditions

- Guarantee only valid for products bought direct from Abcam or one of our authorized distributors