

PE/Cy5® Anti-CD2 antibody [RPA-2.10] ab95556

[2 References](#) [1 图像](#)

概述

产品名称	PE/Cy5® Anti-CD2抗体[RPA-2.10]
描述	PE/Cy5®小鼠单克隆抗体[RPA-2.10] to CD2
宿主	Mouse
偶联物	PE/Cy5®. Ex: 496nm, Em: 670nm
特异性	RPA-2.10 blocks mixed lymphocyte reaction.
经测试应用	适用于: Flow Cyt
种属反应性	与反应: Human
免疫原	Recombinant full length protein corresponding to Human CD2.
阳性对照	Normal human peripheral blood cells/leukocytes
常规说明	<p>The Life Science industry has been in the grips of a reproducibility crisis for a number of years. Abcam is leading the way in addressing this with our range of recombinant monoclonal antibodies and knockout edited cell lines for gold-standard validation. Please check that this product meets your needs before purchasing.</p> <p>If you have any questions, special requirements or concerns, please send us an inquiry and/or contact our Support team ahead of purchase. Recommended alternatives for this product can be found below, along with publications, customer reviews and Q&As</p>

性能

形式	Liquid
存放说明	Shipped at 4°C. Store at +4°C.
存储溶液	pH: 7.20 Preservative: 0.09% Sodium azide
纯度	Protein G purified
克隆	单克隆
克隆编号	RPA-2.10
同种型	IgG1
轻链类型	kappa

应用

The Abpromise guarantee

Abpromise™ 承诺保证使用 ab95556 于以下的经测试应用

“应用说明”部分 下显示的仅为推荐的起始稀释度;实际最佳的稀释度/浓度应由使用者检定。

应用	Ab 评论	说明
Flow Cyt		Use 5µl for 10 ⁶ cells. ab67435 - Mouse monoclonal IgG1, is suitable for use as an isotype control with this antibody.

靶标

功能

CD2 interacts with lymphocyte function-associated antigen (LFA-3) and CD48/BCM1 to mediate adhesion between T-cells and other cell types. CD2 is implicated in the triggering of T-cells, the cytoplasmic domain is implicated in the signaling function.

序列相似性

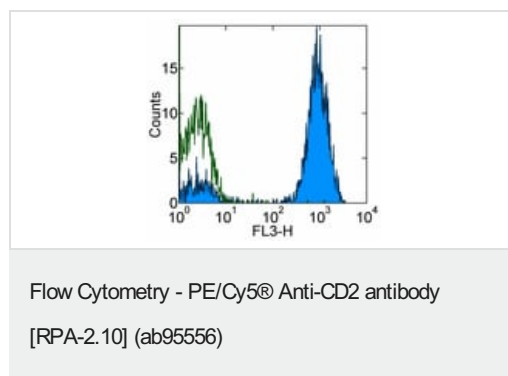
Contains 1 Ig-like C2-type (immunoglobulin-like) domain.

Contains 1 Ig-like V-type (immunoglobulin-like) domain.

细胞定位

Membrane.

图片



Flow cytometry staining of normal human peripheral blood cells with Mouse IgG1 ? Isotype Control PE-Cy5 (open histogram) or ab95556 (filled histogram). Total cells were used for analysis.

Please note: All products are "FOR RESEARCH USE ONLY. NOT FOR USE IN DIAGNOSTIC PROCEDURES"

Our Abpromise to you: Quality guaranteed and expert technical support

- Replacement or refund for products not performing as stated on the datasheet
- Valid for 12 months from date of delivery
- Response to your inquiry within 24 hours
- We provide support in Chinese, English, French, German, Japanese and Spanish
- Extensive multi-media technical resources to help you
- We investigate all quality concerns to ensure our products perform to the highest standards

If the product does not perform as described on this datasheet, we will offer a refund or replacement. For full details of the Abpromise, please visit <https://www.abcam.cn/abpromise> or contact our technical team.

Terms and conditions

- Guarantee only valid for products bought direct from Abcam or one of our authorized distributors